



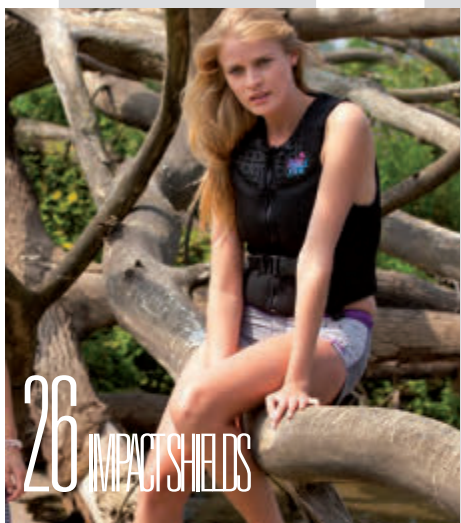
2012  
JOBSPORTS.COM



# JOB BE FUSION OF FUN JOB BE CATALOGUE



# JOBESPORTS.COM



## TAGS



Next to many products a tag is shown. By scanning this tag you will be able to view exclusive product images and get extra information about the item. How does this work? Download the tag app on:

[WWW.GETTAG.MOBI](http://WWW.GETTAG.MOBI)

and scan the tag with your mobile!

All product specifications and prices are subject to change without notice. 2012 Sport & Recreatie Den Bol B.V. all rights reserved. © The colours of the original products might vary slightly from the displayed products due the printing process.

Jobe Sports International is the trade name of the company Sport en Recreatie Den Bol B.V. All our offers, order confirmations and contracts of sale are governed by the general terms and conditions of delivery of Sport en Recreatie Den Bol B.V., as filed with the Chamber of Commerce for Rivierenland in Tiel under trade register number 11033564

### Special thanks to:

Linda van den Broek photographer, Chris Garrison photographer, Sebastian Cans photographer, Dom Romney photographer, Max Models, all amateur models, Cable Waterski & Wakeboards Center Brabant, Waterskicentrum Splash, McCormicks cable park, OWC Cable Park, Pat Panakos, Matt Rualerson, Bootdrivers Aart van der Werf and Wim van den Oord, Waterskischool De Uitvliet, Boat Evasion Sarl, ToDo translation company, Jachthaven 't Leuken, Valckx Watersport, Chris Streiter, Loes de Haan and all the athletes of the Jobe Team

<b>Jobe Team</b> .....	002 - 003
<b>Wetsuits</b>	
Men .....	010 - 016
Ladies .....	004 - 009
Youth .....	040 - 042
(Semi) Drysuits .....	018 - 019
Barefoot Suit .....	017
<b>Vests</b>	
Men .....	020 - 025
Ladies .....	028 - 029
Youth .....	044 - 045
Unisex .....	030 - 031
Impact Shields .....	026 - 027
<b>PWC Gear</b>	
PWC Team .....	032
Wetsuits .....	033 - 035
Vests, jackets & pants .....	036 - 037
Accessories .....	038 - 039
<b>Boardshorts</b>	
Men .....	050 - 053
Ladies .....	054 - 055
Youth .....	043
<b>Rash Guards</b>	
Men .....	046 - 047
Ladies .....	048 - 049
Youth .....	042 - 043
<b>Casual Wear</b>	
Men .....	056 - 058
Ladies .....	059
Youth .....	060
Accessories .....	061
<b>Wakeboards</b>	
Wakeboard Team .....	062 - 063
Men .....	064 - 073
Ladies .....	074 - 075
Packages .....	076 - 079
Bindings .....	080 - 086
<b>Wakeskates</b> .....	087
<b>Kneeboards</b> .....	088 - 089
<b>Combo Skis</b>	
(Shaped) Combo Skis .....	090 - 091
Combo Ski Packages .....	092
Combo Skis Youth .....	093
<b>Slalom Skis</b>	
Slalom Team .....	094
Slalom Skis .....	095 - 098
Slalom Bindings .....	100 - 101
<b>Wakeskis</b> .....	099
<b>Ropes &amp; Handles</b> .....	102 - 106
<b>Gloves</b> .....	107
<b>Protective Gear</b> .....	108 - 109
<b>Bags</b> .....	110 - 111
<b>Boat Accessories</b>	
Towers & Accessories .....	112 - 115
Boom & Poles .....	116
Sacks & Accessories .....	117
<b>Towables</b>	
Towables .....	118 - 138
Towables Youth .....	139
Trampolines .....	139
Watersleds .....	140 - 141
<b>Extras</b> .....	142 - 143
<b>Size Charts &amp; Specifications</b> .....	144 - 145



20 VESTS MEN



74 WAKEBOARDS LADIES



118 TOWABLES



INDEX  
2012

# JOBE TEAM

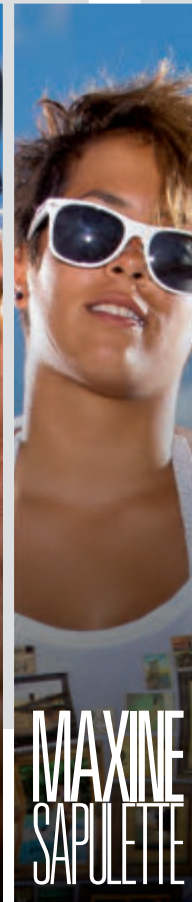
## WAKEBOARDTEAM



AUSTIN  
HAIR



CHRISTIAN  
KOESTER



MAXINE  
SAPULETTE



DECLAN  
CLIFFORD



SJOORS VAN DE  
KERKHOF



KIRSTEEN  
MITCHELL

<b>What's your best achievement ever?</b>	4th 2010 US Pro Tour 2011 US National Champ World Wakeskate Champ	3 times British Champion	World Champion 2008 Open WWA World Champion 2010	1st British Nationals 2011 3rd World Championships 2010 2nd European Championships 2010	1st Jagermeister Wake Riderz 2009	2010 Ladies World Cable Wakeboard Champion
<b>What's your favourite Jobe product (2012)?</b>	Jobe Austin Series	Jobe CliCK Series	Jobe Max Series	Jobe Austin Series	Jobe Vanity 141 & Guerilla 142	Click Bindings & Austin Board
<b>What's your favourite water sports spot?</b>	East Crooked Lake, Florida	JBSki	Down Under Nieuwegein	Box End Park	Down Under Nieuwegein	JBSki
<b>What's your favourite movie?</b>	Step Brothers	Drive	Taken	Inbetweeners	Snatch	How to Train Your Dragon
<b>What's your favourite song?</b>	Dean & Ravo - Walking Around	Wiz Khalifa - Black and Yellow	Pink - Who Knew	Drake - I'm On One	Lynard Skynard - Simple Man	Chris Brown - Yeah
<b>What's your favourite book?</b>	Rich Dad Poor Dad	Unleashed Wake Mag	Dont read books. Haha!	Wakepress	Pimp	Matthew Reilly - Hover Car Racer
<b>What's your favourite food?</b>	Sushi	Chinese	Corn and noodlesoup	Sweets	Thai!!!	Chocolate
<b>Who is the most influential person in your life?</b>	So many I can't count	DAD	My mom was, my sister Rachel Friend/coach Sjoors vd Kerkhof	My Mum	Daan Rigter. He's showing me how to get waisted every party	My Boyfriend
<b>What's the last app that you've downloaded for your phone?</b>	Southwest Airlines	Viber	Whatsapp	Tiny Wings	Mpora video app	Tiny Wings
<b>What's your favourite day in the week?</b>	Monday, its the most relaxing day after a contest	Friday	Saturday because we ride all day and then party at night!	The last day of work	Monday morning. Love it to get back to work all the time (not!)	Any day its sunny
<b>How many times did you saw "The Titanic"?</b>	4 times	Twice	Too many times, epic movie!	Just once, I ran out of tissues	Once	Once
<b>Who is your favourite super hero?</b>	Batman	Superman	Catwoman	Burn't face Man (LOL)	Superman	Dash from the Incredibles
<b>What is your favourite "made in China" product?</b>	American flags	Jobe CliCK Series	My wakeboard	iPhone	My boards ;)	iPhone
<b>What was the most embarrassing nickname your parents gave you?</b>	Goose	CK	Just Max	Granddad called me "Declan Dan the Frying Pan Man"	My dad calls me Sjaakie ouwe rukker. Learn Dutch	Shorty

# SLALOMTEAM



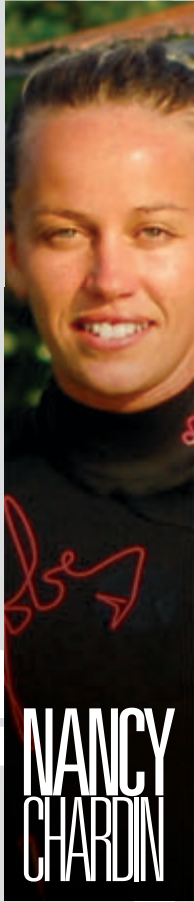
**GUILLAUME  
DUVERNOY**

7th at the World Championships 2009

Rogue Slalomski  
Baurech close to Bordeaux  
Dikenek  
Will Smith - Welcome to Miami  
None  
Asian food  
My parents

Air France app  
Saturday

Three times  
Iron Man  
My running shoes  
Guigui



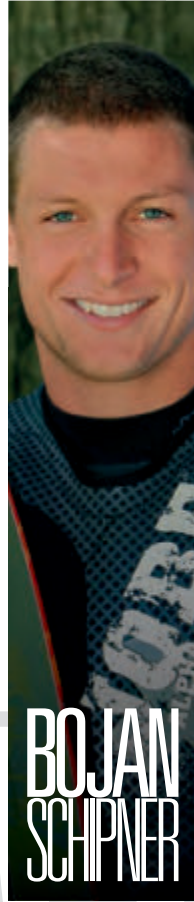
**NANCY  
CHARDIN**

Under 21 jump World Champion 2007 and 2009

Spiral Impact Shield Silver  
Cory Pickos ski school in Florida  
Million Dollar Baby  
Cataracts - Top of the World  
Algebra for dummies  
Sushi  
My dad

Yoga application  
Saturday

I stopped counting long time ago  
Wolverine  
My fake sunglasses  
Louloute



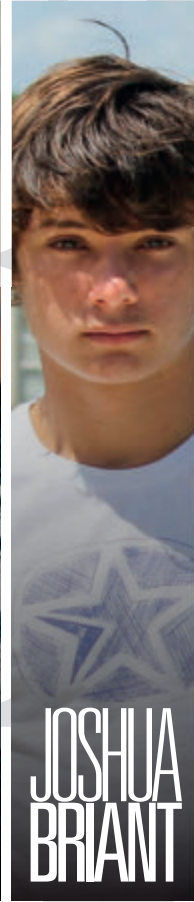
**BOJAN  
SCHIPNER**

2010 Under 21 European Jump Champion 66.9m

Jobe Rogue slalomski  
Franz Oberleitner Training Center  
Die Hard 4  
Lil' Wayne - She will  
Ralph Krueger - TeamLife  
Beefburger  
My mum

SoundCloud  
Friday

Once  
Iron Man  
iPhone 4  
Boji



**JOSHUA  
BRIANT**

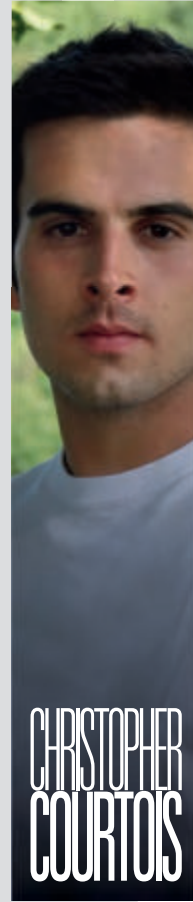
Silver Medal Overall Junior Worlds 2010

Jobe Rogue slalomski  
Jack Travers Sunset Lakes Florida  
300  
Red Hot Chili Peppers - Can't Stop  
A Wise Man's Fear by Patrick Rothfuss  
Mexican  
Dad

Zombie Cafe  
Saturday

Never  
Iron Man  
Electric Guitar  
Smoo

# PWCTEAM



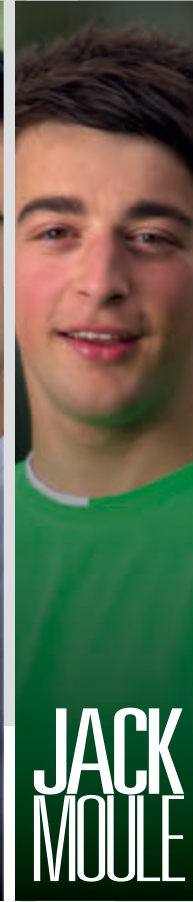
**CHRISTOPHER  
COURTOIS**

European Champion 2006, 2nd European Champion '08 & '09, 3rd World Champ Aquabike UIM '10

Long John Jacket DLX  
The Issoire Nautique Lake  
Rocky IV  
I like all kinds of DJ's  
None  
Japanese food  
My parents and my girlfriend

Allo Ciné  
Saturday

Three times  
"Superman" as Clark Kent  
iPhone  
Douny



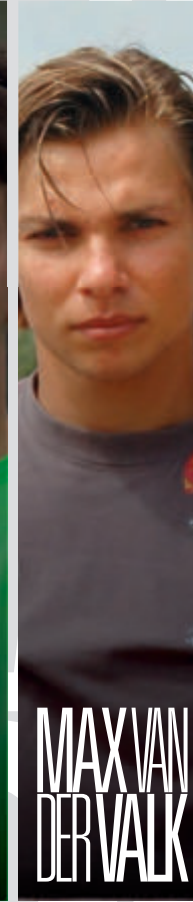
**JACK  
MOULE**

3x British Jetski Freestyle Champion Ranked 2nd in The Worlds

Vision Impact Shield  
Lake Havasu USA  
The Hangover  
Nero - Promises  
None  
Fish and Chips  
My Parents and Travis Pastrana

None, got a Blackberry!  
Friday

Never seen  
Superman  
My iPod  
Little man!



**MAX VAN  
DER VALK**

4th European Tour Ski GP 2011

Suction Gloves  
Maurik, The Netherlands  
Snatch  
Goldfish  
Haar naam was Sarah  
Chateau briand (medium)  
My Dad

Motorcross match up  
Saturday

Once  
Spiderman  
Electric scooter  
Poepje

# BAREFOOT



**MATHIJS  
ZIELMAN**

8x Jr Dutch Champ, 4x Open Dutch Champ, 2nd overall in European Champs, 5th overall in World Champs

Barefoot Suit  
The Blackwater in Hasselt  
The Hangover  
Mann ft. 50 Cent - Buzzin'  
Car Engineering & Mechanics books  
A big t-bone steak  
Of course my parents

Whatsapp  
Every day, when I can ski

No Titanic for me  
Scooby Doo  
Samsung Galaxy S2 phone  
They always call me Mathijs



# WET SUITS LADIES



01.

### 01. Shorty Delight

Color: Blue, Pink - Size: XS, S, M, L, XL, XXL

- 2.5 mm water repellent mesh chest and back
- 2.0 mm neoprene arms and legs
- Thermo lining in chest and back panels for additional warmth
- 100% super stretch fabric
- A-class neoprene for extra comfort
- "Liquid tape" seals to keep water out
- Comfortable ultra stretch collar
- Flat stitch seam construction
- Seamless armpits
- This suit is a perfect match with the Delight Side Entry Vest (see page 29)

Blue: 300512004 - Pink: 301412002

### 02. Full Suit Delight

Color: Blue, Pink - Size Blue: XS, S, M, L, XL - Size Pink: XS, S, M, L, XL, XXL

- 3.0 mm water repellent mesh chest and back panels
- 2.5 mm neoprene arms and legs
- Thermo lining in chest and back panels for additional warmth
- 100% super stretch fabric
- A-class neoprene for extra comfort
- "Liquid tape" seals to keep water out
- Comfortable ultra stretch collar
- Protective kneepads
- Flat stitch seam construction
- Seamless armpits
- This suit is a perfect match with the Delight Side Entry Vest (see page 29)

Blue: 300512005 - Pink: 301412003

Size chart on page 144-145



02.





01.

**01. Shorty Indy**

Color: Blue, Purple - Size: XS, S, M, L, XL

- 2.5 mm water repellent mesh chest and back panels
- 2.0 mm neoprene arms and legs
- Comfortable "Glide skin" collar
- "Glide skin" seals to keep water out
- Super stretch panels on flex areas
- Flat stitch seam construction
- Seamless armpits
- This suit is a perfect match with the Indy vest (see page 29)

Blue: 300511003 - Purple: 301411001

**02. Full Suit Indy**

Color: Blue, Purple - Size: XS, S, M, L, XL

- 3.0 mm water repellent mesh chest and back panels
- 2.5 mm neoprene arms and legs
- Comfortable "Glide skin" collar
- "Glide skin" seals to keep water out
- Super stretch panels on flex areas
- Flat stitch seam construction
- Protective kneepads
- Seamless armpits
- This suit is a perfect match with the Indy vest (see page 29)

Blue: 300511004 - Purple: 301411002



02.



Size chart on page 144-145









**01. Shorty Pure**

Size: XS, S, M, L, XL

- Sleeveless ladies suit with 1/4 leg length for warmer days • 2.0 mm neoprene shorty
  - Flat stitch seam construction • This suit is a perfect match with the Pure vest Pink (see page 29)
- 300012005

**02. Shorty Essence**

Size: XS, S, M, L, XL

- 2.5 mm water repellent mesh chest and back panels • 2.0 mm neoprene arms and legs
  - Flat stitch seam construction • Seamless armpits • This suit is a perfect match with the Essence vest (see page 29)
- 300812003

**03. Full Suit Essence**

Size: XS, S, M, L, XL

- 3.0 mm water repellent mesh chest and back panels • 2.5 mm neoprene arms and legs
  - Flat stitch seam construction • Protective kneepads • Seamless armpits • This suit is a perfect match with the Essence vest (see page 29)
- 300812004

Size chart on page 144-145



# WET SUITS MEN



01.

## 01. Shorty Viper

Color: Blue, Black - Size: S, M, L, XL, XXL

- 2.5 mm water repellent mesh body and back panels • 2.0 mm neoprene legs and arms
- Thermo lining in chest and back panels for additional warmth • 100% super stretch fabric
- A-class neoprene for extra comfort • "Liquid tape" seals to keep water out
- Double layer collar design with "Glide skin" seal for extra comfort • Flat stitch seam construction • Seamless armpits • This suit is a perfect match with the Viper vest (see page 20)

Blue: 300012001 - Black: 300811007

Size chart on page 144-145



02.

### 02. Full Suit Viper

Color: Blue, Black - Size: S, M, L, XL, XXL

- 3.0 mm water repellent mesh body and back panels
- 2.5 mm neoprene legs and arms
- Thermo lining in chest and back panels for additional warmth
- 100% super stretch fabric
- A-class neoprene for extra comfort
- "Liquid tape" seals to keep water out
- Double layer collar design with "Glide skin" seal for extra comfort
- Flat stitch seam construction
- Protective kneepads
- Seamless armpits
- This suit is a perfect match with the Viper vest (see page 20)

Blue: 300012002 - Black: 300811008





01.



02.

### 01. Shorty Alpha

Size: S, M, L, XL

- Special design with long arms and short legs
- 2.5 mm mesh chest and back panels
- 2.0 mm neoprene legs and arms
- Chest zip construction for ultimate flexibility
- 100% super stretch fabric
- A-class neoprene for extra comfort
- Water repellent mesh panels
- Glued and blind stitched seams to keep you warm
- Double liquid tape seals on the sleeves and rolled seals in the legs to keep water out
- Sublimated arm print
- This suit is a perfect match with the Alpha Impact Shield Blue (see page 26)

300512001

### 02. Shorty Vision

Size: S, M, L, XL

- Special design with long arms and short legs
- 2.5 mm mesh chest and back with thermo lining for additional warmth
- 2.0 mm neoprene legs and arms
- 100% super stretch fabric
- A-class neoprene for extra comfort
- Water repellent mesh panels
- Glued and blind stitched seams to keep the water out and keep you warm
- Liquid tape seals on the sleeves and rolled seals in the legs
- This suit is a perfect match with the Vision Impact Shield (see page 26)

300810003



03.



04.

### 03. Shorty Quest

Color: Lime, Black - Size: S, M, L, XL, XXL

- 2.5 mm water repellent mesh body and back panels
- 2.0 mm neoprene arms and legs
- Super stretch panels on flex areas
- Comfortable "Glide skin" collar
- "Glide skin" seals to keep water out
- Flat stitch seam construction
- Seamless armpits
- This suit is a perfect match with the Treasure vest (see page 23)

Lime: 301111001 - Black: 300811002

### 04. Full Suit Quest

Color: Lime, Black - Size: S, M, L, XL, XXL

- 3.0 mm water repellent mesh body and back panels
- 2.5 mm neoprene arms and legs
- Super stretch panels on flex areas
- Comfortable "Glide skin" collar
- "Glide skin" seals to keep water out
- Flat stitch seam construction
- Protective kneepads
- Seamless armpits
- This suit is a perfect match with the Treasure vest (see page 23)

Lime: 301111002 - Black: 300811003

Size chart on page 144-145





01.



02.

**01. Neo Short Lace**

Size: XS, S, M, L, XL, XXL, XXXL

- 2.0 mm neoprene short with lace adjustment
- Super stretch panels in the crotch and at the side of the leg
- Non-slip elastic legs
- Flat stitch seam construction
- Low waist fit

300808018

**02. Neo Short**

Color: Red, Blue, Black - Size: XS, S, M, L, XL, XXL

- 2.0 mm neoprene short with buckle closing
- Double nylon fabric for extra strength
- Super stretch panels in the crotch
- Rolled seals to keep the water out
- Flat stitch seam construction

Red: 300410001 - Blue: 300510001 - Black: 300810004







03.

**03. Shorty Extra**

Color: Blue, Red, Yellow - Size: XS, S, M, L, XL, XXL, XXXL

- 2.5 mm water repellent mesh body and back panels
- 2.0 mm neoprene arms and legs
- Comfortable "Glide skin" collar
- "Glide skin" seals to keep water out
- Seamless armpits
- Embossed chest logo
- This suit is a perfect match with the Combat vest (see page 24)

Blue: 300511002 - Red: 300411002 - Yellow: 300211002

**04. Full Suit Extra**

Color: Blue, Red, Yellow - Size: XS, S, M, L, XL, XXL, XXXL

- 3.0 mm water repellent mesh body and back panels
- 2.5 mm neoprene arms and legs
- Comfortable "Glide skin" collar
- "Glide skin" seals to keep water out
- Flat stitch seam construction
- Protective kneepads
- Seamless armpits
- Embossed chest logo
- This suit is a perfect match with the Combat vest (see page 24)

Blue: 300511001 - Red: 300411001 - Yellow: 300211001



04.

Size chart on page 144-145



01.



02.

#### 01. Shorty Fusion

Color: Black, Red - Size: XS, S, M, L, XL, XXL

- 2.0 mm neoprene shorty • 100% double nylon suit, for extra strength • Flat stitch seam construction • Seamless armpits

Black: 300812005 - Red: 300412003

#### 02. Shorty Chiller

Size: S, M, L, XL, XXL

- 2.0 mm neoprene sleeveless shorty • Water repellent mesh on body and back panels • Rolled leg seals to keep water out • Flat stitch seam construction

300810005

Size chart on page 144-145



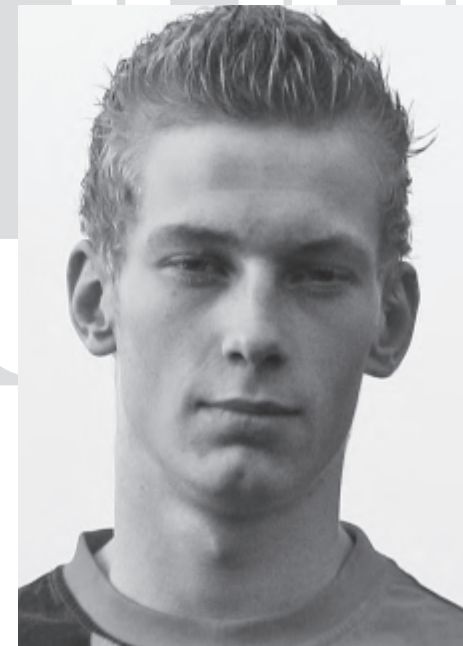
03.

### 03. Invert Barefoot Suit

Size: XXXS, XXS, XS, S, M, L, XL

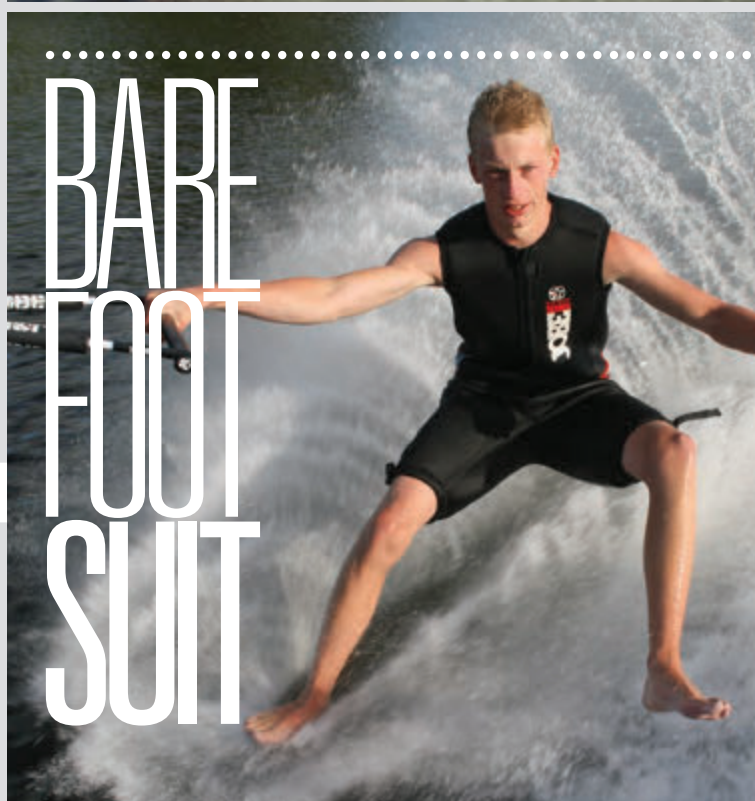
- Padded foam back and body panels for floatation and protection
- Extra thick 15 mm bottom padding
- 100% double nylon for extra strength
- Double stitched and mouser taped seams for extra strength
- Stiff 1.0" leg straps, adjustable and closing with a "Fix Lock" buckle
- Water drain patches

300811006



**MATHIJS ZIELMAN**

5th Overall World Championship 2010



BARE  
FOOT  
SUIT

JOBE PRO  
SKIER



01.



02.

**01. Neutron Back Zip**

Size: S, M, L, XL, XXL

• 4.0 mm neoprene body and back • 3.0 mm neoprene legs and arms • "Liquid tape" seams to keep the water out • Overhead water shield with H2O drain • H2O draining panel on the legs • 100% super stretch • A-class neoprene for extra comfort • Thermo lining in body-, back- and side panels for extra warmth • Double layer collar design for extra comfort • Seamless armpits

300810006

**02. Neutron Chest Zip**

Size: S, M, L, XL, XXL

• 4.0 mm neoprene body and back panels • 3.0 mm neoprene legs and arms • "Liquid tape" and blind-stitched seams to keep the water out • Chest zip construction for ultimate flexibility • "Liquid tape" seals • H2O draining panel on the legs • 100% super stretch • A-class neoprene for extra comfort • Thermolining in body, back and side panels for additional warmth • Double layer collar design for extra comfort • Seamless armpits

300812001

# (SEMI) DRY SUITS





03.  
Men



03.  
Ladies



04.



05.



06.

### 03. 5.0 mm Polar Steamer

Men size: S, M, L, XL, XXL - Ladies size: S, M, L, XL

- Preformed suit, special design for both men and women • 5,0 mm mesh body and back panels • 3.0 mm mesh arms and legs combined with super stretch neoprene on the flex areas for more freedom of movement • A-class neoprene for extra comfort • Full thermo inner lining for additional warmth • Water repellent mesh panels • "Glide skin" seals to keep water out • Taped on critical areas for extra strength • Water shield with H2O drain • Comfortable "Glide skin" collar • Glued and blind stitched • Protective kneepads • Seamless armpits

Men: 300811009 - Ladies: 300811010

### 04. Dry Suit Neoprene

Size: XS, S, M, L, XL, XXL

- Waterproof 210 denier breathable, coated nylon fabric • Baggy upper fit for additional layering • Streamlined 3.5mm Neoprene lower body panels and waterrepellent mesh lower legs • 100% taped seams • "Glide Skin" neck, wrist and ankle seals • Waterproof horizontal back zipper

300812006

### 05. Dry Suit

Size: XS, S, M, L, XL, XXL

- 320 denier breathable nylon fabric with a nylon tricot coating on the inside • Taped waterproof seams • Latex neck-, wrist- and ankle seals • High tech waterproof zipper • Adjustable braces • Elasticized waist for tailored fit • Adjustable wrist and ankle straps

300809011

### 06. Thermo Underwear

Size: XS, S, M, L, XL, XXL

- Thermo suit to wear underneath your dry suit for additional warmth • "Spandex" top layer with thermo inner lining • 100% stretch fabric for more comfort

310809009

Size chart on page 144-145



01.

### 01. Viper Vest

Color: Black, Blue, Yellow - Size: S, M, L, XL, XXL, XXXL

• 50N neoprene vest • CE-approved or United States Coast Guard approved • Segmented foam panels for extra freedom of movement • Foam side panels for extra protection • High side cut for more maneuverability • 2 Integrated webbing belts • D-ring for emergency cord attachment • Mesh panels for water drainage • This vest is a perfect match with the Viper suit (see page 10 - 11)

Black CE EN393 approved: 240811004 - Blue CE ISO approved: 240012001 - Yellow CE ISO approved: 240212007

Black USCG approved: 247712019 - Blue USCG approved: 247712020 - Yellow USCG approved: 247712021

Coast Guard approved version: Vest may lightly differ from shown image and specifications • No side foam

Size chart on page 144-145





02.

### 02. Intense Vest

Size: S, M, L, XL, XXL, XXXL

- 50N neoprene vest • CE-approved according to ISO 12402.5 or United States Coast Guard approved
- Comfortable soft PVC foam • Integrated reinforced back panel and back support for more protection
- Neoprene panels combined with shiny and soft "Glide skin" panels • Reflecting ink for extra visibility in the dark • Large armholes which allow extended reach and freedom of movement • D-ring for emergency cord attachment • 2 Integrated webbing belts • Mesh panels for water drainage

CE ISO approved: 240812002 - USCG approved: 247712024

Coast Guard approved version: Vest may lightly differ from shown image and specifications

- No back protector



# VESTS MEN







01.

### 01. Freestyle Vest

Color: Black, White - Size: S/M, L/XL

- 50 N molded foam vest • CE-approved according to ISO 12402.5
- Pullover vest with side zipper • Fixed foam side panels for extra protection • Special molded exterior panels for lightweight durability • Fast drying, non water absorbing panels • Integrated back support

Black: 240810007 - White: 240110001



02.

### 02. Treasure Vest

Size: S, M, L, XL, XXL, XXXL

- 50N neoprene vest • CE-approved according to ISO 12402.5
- Pullover vest with side zipper • Comfortable soft PVC foam
- Extra padded side panels for more protection • Silicone print design • 2 Integrated webbing belts • Large armholes that allow extended reach and freedom of movement • D-ring for emergency cord attachment • Mesh panels for water drainage • This vest is a perfect match with the Quest suit (see page 13) 240812003

### 03. DLX Side Entry Vest

Size: S, M, L, XL, XXL, XXXL

- 50N neoprene vest with "Glide skin" panels • CE-approved according to ISO 12402.5 • Pullover vest with side zipper
- Comfortable soft PVC foam • Extra thick front panel for extra chest protection • Foam side panels for extra protection • Large armholes that allows extended reach and freedom of movement
- D-ring for emergency cord attachment • Mesh panels for water drainage • This vest is a perfect match with the Long John Jacket Deluxe (see page 33) 240812009

Size chart on page 144-145



03.



01.

**01. Combat Vest**

Color: Black, Yellow, Red, Blue - Size: S, M, L, XL, XXL, XXXL

• 50N neoprene vest • CE-approved according to ISO 12402.5 or United States Coast Guard approved • Thin foam panel for more maneuverability • D-ring for emergency cord attachment • Mesh panels for water drainage • This bright colored vest is a perfect match with the Extra suit (see page 15)

Black CE ISO approved: 240811005 - Yellow CE ISO approved: 240211003 - Red CE ISO approved: 240411004

Blue CE ISO approved: 240511002 - Black USCG approved: 247712006 - Yellow USCG approved: 247712008

Red USCG approved: 247712009 - Blue USCG approved: 247712007

Coast Guard approved version: Vest may lightly differ from shown image and specifications

Size chart on page 144-145



02.

## 02. Trigger Super Stretch Vest

Size: XS, S, M, L, XL, XXL, XXXL

- This is a unique neoprene vest made out of 100% flex fabrics • 50N neoprene vest
- CE-approved according to ISO 12402.5 • The stretch fabric gives you much more comfort, a better fit and freedom of movement • Comfortable soft PVC foam • D-ring for emergency cord attachment • Mesh panels for water drainage

240810003





# IMPACT SHIELDS



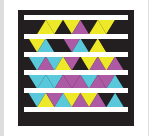
01.

02.



03.

04.



### 01. Click Impact Shield

Size: S, M, L, XL

- A front zip jacket created by British cable champion CK Koester made out of 3D fabric, which makes the vest super lightweight, more comfortable to wear and fast drying
- This jacket gives you protection on the water
- Flex panels and segmented foam at the chest and back for more freedom of movement
- Zipper cover with easy magnet closing
- Large armholes that allow extended reach and freedom of movement
- This jacket is designed in the same style as the Click wakeboard (see page 66)

300512006 (NON coast guard or CE approved)

### 02. Field Impact Shield

Size: S, M, L, XL, XXL

- A front zip jacket made out of 3D fabric, which makes the vest super lightweight, more comfortable to wear and fast drying
- This jacket gives you protection on the water
- The additional foam panels on side and lower back offer extra protection to the more vulnerable parts of the body
- Segmented foam panels for more freedom of movement
- Large armholes which allows extended reach and freedom of movement

300811011 (NON coast guard or CE approved)

### 03. Vision Reversible Impact Shield

Size: S, M, L, XL

- A reversible pullover vest made out of 100% super stretch fabric for a great fit and extra freedom of movement
- This vest gives you extra protection and buoyancy on the water
- Zipless construction
- Extra side protection
- Lightweight
- Large armholes for extra freedom of movement
- All foam pockets have extra water drains
- This vest is a perfect match with the Vision suit (see page 12)

300810007 (NON coast guard or CE approved)

### 04. Alpha Impact Shield

Size Blue: XS, S, M, L, XL - Size Black: XXS, XS, S, M, L, XL

- A pullover jacket for protection on the water
- 100% super stretch fabric and segmented foam panels that give some extra freedom of movement
- New comfortable collar construction
- Back zip construction
- Side foam panels for protection
- Light weight
- Large armholes that allow extended reach and freedom of movement
- The Alpha Impact Shield blue is a perfect match with the Alpha shorty (see page 12)

Blue: 300512007 - Black: 300812008 (NON coast guard or CE approved)

### 05. Max Impact Shield Ladies

Size: XS, S, M, L, XL

- Specially designed jacket for ladies, created by our Jobe world champion Maxine Sapulette
- A pullover jacket made out of 100% super stretch fabric that gives you protection on the water
- Side foam panels for protection
- Non-zip construction
- Large armholes that allow extended reach and freedom of movement
- Extra water drains
- This jacket is designed in the same style as the Max wakeboard (see page 74)

300012007 (NON coast guard or CE approved)

### 06. Quote Impact Shield Ladies

Size: XS, S, M, L

- A pullover jacket for ladies made out of 100% super stretch fabric that gives you protection on the water
- New comfortable collar construction
- Side foam panels for protection
- Non-zip construction
- Large armholes that allow extended reach and freedom of movement
- Extra water drains
- Boardshort connector

300012009 (NON coast guard or CE approved)

### 07. Remix Impact Shield Ladies

Size: S, M, L, XL

- A front zip jacket for ladies made out of 3D fabric, which makes the vest super lightweight, more comfortable to wear and fast drying
- This jacket gives you protection on the water
- The additional foam panels on the side and lower back offer extra protection to the more vulnerable parts of the body
- Segmented foam panels for more freedom of movement
- Large armholes that allow extended reach and freedom of movement
- This jacket is a perfect combination with the boardshort SoHo (see page 55)

300012008 (NON coast guard or CE approved)

Size chart on page 144-145

05.



06.



07.





USCG APPROVED



ISO APPROVED

01.



02.



03.



04.



# VESTS LADIES



### 01. Indy Vest

Color: Blue, Purple - Size: S, M, L, XL, XXL (size XXL not available in USCG approved version)  
 • 50N neoprene vest designed for ladies • CE-approved according to ISO 12402.5 or United States Coast Guard approved • Comfortable soft PVC foam • Half integrated webbing straps D-ring for emergency cord attachment • This vest is a perfect match with the Indy suits (see page 6)  
 Blue CE ISO approved: 240512005 - Purple CE ISO approved: 241312001  
 Blue USCG approved: 247712022 - Purple USCG approved: 247712023  
 Coast Guard approved version: Vest may lightly differ from shown image and specifications

### 02. Pure Neo Vest Blue

Size: XS, S, M, L, XL  
 50N ISO-approved nylon vest designed especially for ladies • The interior of the vest is made out of neoprene for extra comfort, the exterior is made out of nylon • Comfortable soft PVC foam  
 • D-ring for emergency cord attachment  
 240510002

### 03. Essence Vest

Size: XS, S, M, L, XL, XXL (size XS not available in USCG approved version)  
 • 50N neoprene vest designed for ladies • CE-approved according to ISO 12402.5 or United States Coast Guard approved • Soft PVC-foam front panel • D-ring for emergency cord attachment • This vest is a perfect match with the Essence suits (see page 9)  
 CE ISO approved: 240812004 - USCG approved: 247712010  
 Coast Guard approved version: Vest may lightly differ from shown image and specifications

### 04. Pure Vest Pink

Size: XS, S, M, L, XL, XXL  
 • 50N nylon vest designed for ladies • CE-approved according to ISO 12402.5 • Soft PVC-foam front panel • D-ring attachment • This vest is a perfect match with the Pure Shorty (see page 9)  
 241412002

### 05. Code Vest

Size: XS, S, M, L, XL, XXL (size XS not available in USCG approved version)  
 • Neoprene vest made out of 100% flex fabrics • 50N neoprene vest designed for ladies  
 • CE-approved according to ISO 12402.5 or United States Coast Guard approved • The stretch fabric gives you much more comfort, a better fit and freedom of movement • Neoprene panels combined with shiny and soft "glideskin" panels • Comfortable soft PVC foam • Integrated webbing straps • D-ring for emergency cord attachment • Mesh panels for water drainage  
 CE ISO approved: 240012002 - USCG approved: 247712005  
 Coast Guard approved version: Vest may lightly differ from shown image and specifications

### 06. Delight Side Entry Vest

Color: Pink, Blue - Size: XS, S, M, L, XL  
 • 50N neoprene vest designed for ladies • CE-approved according to ISO 12402.5 • Comfortable soft PVC foam • Extra padded side panels for more protection • Pullover vest with side zipper  
 • Half integrated webbing straps • Large armholes that allow extended reach and freedom of movement • D-ring for emergency cord attachment • Mesh panels for water drainage • This vest is a perfect match with the Delight suits (see page 5)  
 Pink: 241412003 - Blue: 240512002

Size chart on page 144-145



01.



02.



03.



04.

05.



#### 01. 4 Buckle Pro Vest

Color: Black, Yellow, Red - Size: XS, S, M, L, XL, XXL, XXXL  
 • 50N neoprene vest • CE-approved according to ISO 12402.5 or United States Coast Guard approved • Soft PVC foam for more comfort • Side foam panels for extra protection • D-ring for emergency cord attachment  
 Black CE ISO approved: 240811002 - Yellow CE ISO approved: 240211001  
 Red CE ISO approved: 240411001 - Black USCG approved: 247712001  
 Yellow USCG approved: 247712003 - Red USCG approved: 247712002  
 Coast Guard approved version: Vest may lightly differ from shown image and specifications

#### 02. Outburst Vest

Color: Blue, Yellow, Red - Size: S/M, L/XL, XXL/XXXL, 4XL/5XL (size 4XL/5XL not available in USCG approved version)  
 • 50N neoprene vest • CE-approved according to ISO 12402.5 or United States Coast Guard approved • Nylon side panels for adjustability • Fully adjustable straps for a better fit • D-ring for emergency cord attachment  
 Blue CE ISO approved: 240511001 - Yellow CE ISO approved: 240211002  
 Red CE ISO approved: 240411002 - Blue USCG approved: 247712012  
 Yellow USCG approved: 247712014 - Red USCG approved: 247712013  
 Coast Guard approved version: Vest may lightly differ from shown image and specifications

#### 03. Universal Vest

Color: Yellow, Red - Size: Universal  
 • 50N neoprene vest • CE-approved according or United States Coast Guard approved • One size fits all • CE EN 393 approved version are limited  
 Yellow CE EN393 approved: 240209003 - Red CE EN393 approved: 240409005  
 Yellow CE ISO approved: 240211005 - Red CE ISO approved: 240411006  
 Yellow USCG approved: 247712018 - Red USCG approved: 247712017  
 Coast Guard approved version: Vest may lightly differ from shown image and specifications

#### 04. Pet Buoyancy Jacket

Color: Red, Pink - Size: XS, S, M  
 • This is a comfortable neoprene vest for your dog but can be used for other pets as well • Reflective panel for more visibility • D-ring attached for dog leash • Zipper on back for easy entry and exit • Handle on back • Neoprene on belly to protect the skin from the webbing and buckles  
 Red: 240410008 - Pink: 241412001

#### 05. Dog Leash

Specs: 6ft / 183cm  
 210001056

#### 06. Comfort Boating Vest

Size: Junior, S, M, L, XL  
 • 100 Newton boating vest • CE-approved according to ISO 12402.4  
 • Reflective panels and non clog whistle for safety • All versions provided with crotch straps • Strong nylon outer cover and lightweight foam  
 240312001

#### 07. Easy Boating Package

Content: 2 x S/M, 3 x L/XL  
 • 5 x 100 Newton boating vests complete with ventilating transparent bag  
 • CE-approved according to ISO 12402.4 • Horseshoe style with strong nylon outer cover • Reflective panels and waterproof whistle for safety  
 240312002

#### 08. Universal Package

Content: 4 Universal vests  
 • 4 CE-approved 50 Newton nylon vests complete with ventilating transparent bag • CE-approved according to ISO 12402.5 • One size fits all  
 240411007

Size chart on page 144-145



# VESTS UNISEX



06.



07.



5x



08.



4x



**CHRISTOPHER COURTOIS**  
World Champion Aquabike UIM 2010

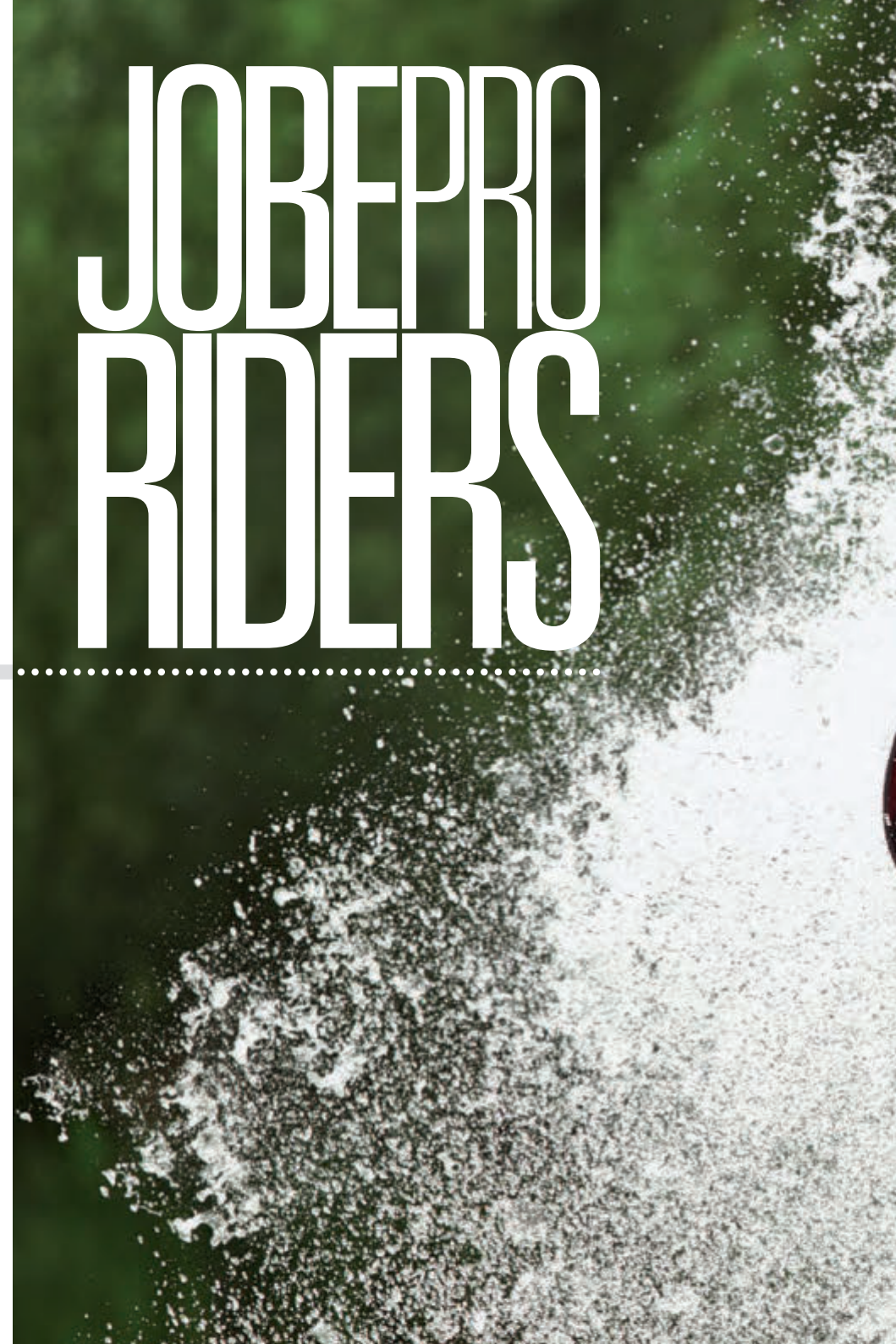


**JACK MOULE**  
3 times British Jetski Freestyle Champion



**MAX VAN DER VALK**  
4th at European Tour Ski GP 2011

# JOBEPRO RIDERS





# PWC GEAR

RIDER: JACK MOULE



01.

## 01. Long John Jacket DLX

Size: S, M, L, XL, XXL, XXXL

- 2.5 mm neoprene wetsuit • 2.0 mm neoprene jacket • 100% super stretch fabric
  - A-class neoprene for extra comfort • "Glide skin" seals to keep the water out
  - Comfortable ultra stretch collar • Flat stitch seam construction • Back zipper on the suit
  - Short back zipper construction on the jacket • Integrated 5.0 mm shin, knee and inner knee protectors • Seamless armpits • This suit is a perfect match with the DLX side entry vest (see page 37)
- 300811012



01.

**01. Long John Jacket Secure**

Color: Blue, Black - Size: S, M, L, XL, XXL, XXXL

- 2.0 mm neoprene wetsuit and jacket • "Glide skin" seals to keep water out • Long John equipped with "Spandex" short sleeves • Flat stitch seam construction • Seamless arm pits • This suit is a perfect match with the Secure Side Entry vest (see page 37)
- Blue: 300509006 - Black: 300409008

Size chart on page 144-145



02.

**02. Long John Jet Queen**

Size: XS, S, M, L, XL

- Special designed wetsuit with jacket for women
  - Consists of a 2.0 mm neoprene sleeveless wetsuit and a 2.0 mm front zipper neoprene jacket
  - "Glide skin" seals to keep water out
  - Flat stitch seam construction
  - Protective kneepads
  - Seamless armpits at the jacket
  - This suit is a perfect match with the Delight vest (see page 28)
- 300012006



01.

**01. Furious Jetski Pants**

Size: S, M, L, XL

- Lace closing
- Flex panel on the back for extra freedom of movement
- Adjustable side straps
- 2.0 mm neoprene thigh panels for extra protection
- Detachable legs to transform pants into shorts

310812001



02.



03.



04.



04.



05.

### 02. Jet Jacket Blue

Size: M, L, XL, XXL, XXXL

• 2.0 mm neoprene body and back • 1.5 mm neoprene on arms • A-class neoprene for extra comfort • 100% super stretch fabric • "Glide skin" seals to keep the water out • Comfortable ultra stretch collar • Flat stitch seam construction • Front zipper construction • Elbow pads • Seamless armpits  
300508003

### 03. Neoprene Jacket

Size: M, L, XL

• 1.5 mm neoprene jacket • Combination of mesh and neoprene panels • Flat stitch construction • Fleece body for extra warmth • Water repellent mesh • Water drains in pockets  
300809008

### 04. Secure Side Entry Vest

Color: Black, Blue - Size: S/M, L/XL, XXL/XXXL

• 50N nylon side entry vest • CE-approved • Thick PVC foam for extra chest protection • D-ring for emergency cord attachment • This vest is a perfect match with the Long John Jacket Secure (see page 34)  
Black Limited Edition CE EN393 approved: 240811003 - Blue Limited Edition CE EN393 approved: 240411003  
Black CE ISO approved: 240812006 - Blue CE ISO approved: 240512003

### 05. DLX Side Entry Vest

Size: S, M, L, XL, XXL, XXXL

• 50N neoprene vest with "Glide skin" panels • CE-approved according to ISO 12402.5 • Pullover vest with side zipper • Comfortable soft PVC foam • Extra thick front panel for extra chest protection • Foam side panels for extra protection • Extra long and wide area for arms that allows extended reach and freedom of movement • D-ring for emergency cord attachment • Mesh panels for water drainage • This vest is a perfect match with the Long John Jacket DLX (see page 33)  
240812009

Size chart on page 144-145

### 01. Floatable Glasses

Color Knox: White, Blue, Silver, Black Rubber  
Color Cypris: Silver

- Unique and comfortable design
- Lens protection rate of UV400
- Black Rubber version comes with polarized lenses

Knox White: 420108001 - Knox Blue: 420506001

Knox Silver: 420705001

Knox Black Rubber Polarized: 420810001

Cypris Silver: 420708001

### 02. Goggles

Colour: Black, Silver

- Unique and comfortable design
- PC double lens with anti-fog and protection rate UV400

Black: 420812001 - Silver: 420706001

### 03. Neoprene Socks

Size: S, M, L

- 2,0 mm super stretch neoprene
- Glued and stitched

300804009

### 04. H2O Shoes High model

Size: 3 up to 12

- 2,0 mm neoprene shoes with reinforced sole
- Ideal for all water sports activities
- Comfortable and warm
- Solid reinforced sole for extra comfort on rough surfaces
- Airprene construction for extra ventilation

300811014

### 05. Aqua Shoes

Size: 3 up to 12

- Ideal shoes for all water sports activities
- Comfortable and warm
- Soft comfortable sole
- "Airmesh" for water draining

300810012

### 06. Neoprene Boot Black Head

Size: 4 up to 12

- Inner sock for warmth
- Reinforced heel for support
- Stiff sole provides excellent grip
- Water drain panels
- Fast drying

300812002

### 07. Neoprene Boot Black Rave

Size: 5 up to 12

- Inner sock for warmth
- Reinforced heel for stiffness
- Stiff sole provides excellent grip
- Water drain panels
- Fast drying

300409010

Size chart on page 144-145

01.



01.



01.



01.



Polarized

01.



Cypris

02.



02.



03.



04.



05.



06.



07.



RIDER: MAX VAN DER VALK







#### 08. Suction Gloves

Size: XS, S, M, L, XL, XXL

- Short model for more freedom of movement
- Anti slip silicon-printed hand palm
- Padded panels on palm of hand
- PVC knuckle and finger guards
- Segmented finger design
- Soft and strong Amara fabric in palm of hand

#### 09. Swathe Gloves

Size: XS, S, M, L, XL, XXL

- Short model for more freedom of movement
- Padded panels and nonslip silicon print on palm for extra grip
- Segmented finger design
- Soft and strong Amara fabric in palm of hand

#### 10. Neoprene Gloves

Size: S, M, L, XL, XXL

- 2.5 mm neoprene glove for extra warmth
- Glued and blind stitched seams
- Nonslip silicon-printed hand palm

#### 11. Neoprene Hood

Size: S, M, L

- 4.0 mm super stretch neoprene hood for extra warmth

#### 12. Shin Protector

Size: M, L, XL

- 5.0 mm protector that protects the shin, knee and inner knee
- Adjustable width
- Comes in 2-piece set

#### 13. Wrist Seal

Size: Universal

- Neoprene wrist seal, safety device

#### 14. Emergency Cord

- Four different keys to fit all PWC brands like Yamaha, Sea-Doo (non-DESS), Kawasaki, Polaris, Tigershark and Wet Jet

#### 15. Barracuda Helmet

Size: M (57-58cm), L (59-60cm), XL (61-62cm)

- New in the Jobe range the Barracuda full face helmet. This professional protection gear is specially designed for Jetski and Personal Water Craft (PWC) riders. Made out of high quality polycarbonate, for maximum protection from high impact
- E certification
- Comfortable soft inner lining
- Fit pads
- Adjustable chin strap with safety clip
- Adjustable sun visor
- Full covered art work
- Includes soft protection bag for storage

Size chart on page 144-145



08.



09.



10.



11.



12.



13.



14.



15.



01.

**01. Rebel Steamer Youth**

Size: L, XL, XXL

- 5.0 mm water repellent mesh body and back for extra warmth
- 3.0 mm arms and legs • Soft "Glide skin" seals to keep water out
- Comfortable "Glide skin" collar • Glued and blind stitched construction
- Taped on critical areas for extra strength
- Protective kneepads • Seamless armpits

300809009

# WET SUITS YOUTH





02.

**02. Full Suit Rebel**

Color: Red, Yellow, Blue - Size: XXS, XS, S, M, L, XL, XXL  
 • 3.0 mm water repellent mesh body and back for extra warmth • 2.5 mm neoprene arms and legs • Comfortable "Glide skin" collar • "Glide skin" seals for easy entry/exit • Flat stitch seam construction • Protective kneepads • Seamless armpits • This suit is a perfect match with the Rebel Jacket (see page 44)  
 Red: 300410004 - Yellow: 300210002 - Blue: 300510004



03.

**03. Shorty Rebel**

Color: Red, Yellow, Blue - Size: XXS, XS, S, M, L, XL, XXL  
 • 2.5 mm water repellent mesh body and back for extra warmth • 2.0 mm neoprene arms and legs • Comfortable "Glide skin" collar • "Glide skin" seals for easy entry/exit • Flat stitch seam construction • Seamless armpits • This suit is a perfect match with the Rebel Jacket (see page 44)  
 Red: 300410003 - Yellow: 300210001 - Blue: 300510003

Size chart on page 144-145



01.



02.



03.



04.



05.  
€ 233,95



06.



07.



08.

09.

### 01. Shorty Trace

Color: Pink, Black - Size: XS, S, M, L, XL, XXL, XXXL  
• 2.0 mm neoprene shorty for juniors • 100% nylon for extra strength • Flat stitch seam construction • Seamless armpits • This suit is a perfect match with the Trace youth vest (see page 44)  
Pink: 301412001 - Black: 300812009

### 02. Rash Suit Fish

Size: 3XS, 2XS  
• "Spandex" short made of comfortable, soft and "4-way stretch" fabric with the highest UV protection • Zipper for easy entry and exit • Flat stitch seam construction • Seamless armpits  
300511005

### 03. Crazy Dino Floating Suit

Size: 3XS/2XS  
• Rash suit with floatation panels • CE-approved as swimming aid according to EN1318-1:2003 • UV protective fabrics • Comfortable, soft and "4-way stretch" fabric • Flat stitch seam construction • Seamless armpits  
241108001

### 04. Shorty Flex Youth

Size: XS, S, M, L, XL, XXL  
• 2.0mm neoprene shorty for juniors • 100% nylon for extra strength • Flat stitch construction • Seamless armpits • Standard neoprene  
300409009

### 05. Shorty Joy

Size: XXS, XS, S, M  
• Child-friendly shorty for youngsters • 2.5 mm neoprene body and back • 2.0 mm neoprene arms and legs • 100% double nylon for extra strength • Comfortable "Glide skin" collar • "Glide skin" seals to keep water out • Flat stitch seam construction • Seamless armpits • This suit is a perfect match with the youth vest Joy (see page 44)  
300411005

### 06. Rash Guard Happy Rhino

Size: 4XS/3XS, 2XS/XS  
• A rash guard for younger children • Comfortable, soft and "4-way stretch" fabric with the highest UV protection • Zipper at the back for easy entry and exit • Flat stitch seam construction  
310512001

### 07. Rash Guard Antzz

Size: 2XS/XS  
• A good looking rash guard for the younger children • UV protection, UPF 50+ rating • Comfortable, soft and 4-way stretch fabric • Zipper for easy entry and exit  
• Flat stitch construction  
310110002

### 08. Aqua Shoes Youth

Size: XS, S, M, L, XL  
• Ideal shoe for all watersports activities • Comfortable and warm • Soft comfortable sole • "Airmesh" for water draining  
300810011

### 09. H2O Shoes Youth

Size XS, S, M, L, XL  
• 2.0 mm neoprene shoes • Ideal for all water sports activities • Comfortable and warm • Solid reinforced sole for extra comfort on rough surfaces • Airprene construction for extra ventilation  
300407012



# BOARD SHORTS & RASH GUARDS YOUTH



10.



11.

### 10. Rash Guard Micron Youth

Color: Purple, White - Size: 2XS/XS, S/M, L/XL  
• Comfortable, soft and "4-way stretch" fabric with the highest UV protection and special fast drying fabric • Seamless armpits for more comfort • Size 2XS/XS is equipped with zipper at the back for easy entry and exit • This rash guard is a perfect match with the Micron Boardshort  
Purple: 310111009 - White: 310811011

### 11. Boardshort Micron Youth

Color: Black, Purple - Size: S, M, L, XL, XXL  
• Lace closure with extra "Spandex" back panel • Lightweight and fast drying • Back pocket with zipper incl. key lace • Mesh water drain pocket • This boardshort is a perfect match with the Micron Rash Guard  
Purple: 310811015 - Black: 310811012

Size chart on page 144-145



01.



02.



03.



04.



05.



06.



07.



08.



### 01. Rebel Jacket Youth

Color: Red, Blue, Yellow - Size: S/M, L/XL, XXL

- Non CE-approved
- Comfortable soft neoprene jacket
- Contoured side and back panels for excellent maneuverability
- This jacket is a perfect match with the Rebel suit (see page 41)

Red: 240410006 - Blue: 240510003 - Yellow: 240210001

### 02. Micron Youth Vest

Color: Black, Purple - Size: Youth

- 50N neoprene vest
- CE-approved or United States Coast Guard approved
- Soft and comfortable PVC foam
- D-ring for emergency cord attachment
- This vest is a perfect match with the Micron boardshort and rash guard (see page 43)

Black CE EN 393 approved: 240811006

Black CE ISO appr.: 240812010 - Purple CE ISO appr.: 241312002

Black USCG appr.: 247712025 - Purple USCG appr.: 247712026

*Coast Guard approved version: Vest may lightly differ from shown image and specifications*

### 03. Trace Youth Vest Nylon

Color: Black, Pink - Size: Youth

- 50N neoprene vest
- CE-approved according to ISO 12402.5 or United States Coast Guard approved
- Comfortable soft PVC foam
- Side panels
- D-ring for emergency cord attachment
- This vest is a perfect match with the shorty Trace (see page 42).

Black CE ISO appr.: 240812005 - Pink CE ISO appr.: 241412004

Black USCG appr.: 247712015 - Pink USCG appr.: 247712016

*Coast Guard approved version: Vest may lightly differ from shown image and specifications*

### 04. Starter Youth Vest

Size: Youth 30-40 kg

- 50N nylon youth vest
- CE-approved according to ISO 12402.5
- Side foam panels
- Half integrated webbing straps

240412003

### 05. Joy Youth Vest

Size: Youth 30-40 kg

- 50N nylon youth vest
- CE-approved according to ISO 12402.5
- Nylon side panels for maximum adjustability
- Crotch straps
- This jacket is a perfect match with the shorty Joy (see page 42.)

240212006

### 06. Scribble Vest

Size: Youth 30-40 kg

- 50N neoprene vest
- CE-approved according to ISO 12402.5
- Nylon side panels for maximum adjustability
- Crotch straps

240012003

### 07. Comfort Boating Vest Youth

Color: Yellow, Orange - Size: 3XS/2XS, XS/S, M/L

- 100N boating vest
- CE-approved according to ISO 12402.4
- Reflecting panels for better visibility
- Waterproof whistle included
- Crotch straps
- Strong nylon outer cover and lightweight foam

Yellow: 240212005 - Orange: 240312003

### 08. Nexus Safety Vest

Size: Infant, Child (size Child not available in USCG approved version)

- 100N safety vest with collar
- CE-approved according to EN 395 or United States Coast Guard approved
- Soft and comfortable PVC foam
- Crotch straps
- Reflecting panels
- Waterproof whistle included

CE approved: 240410002 - USCG approved: 247712011

*Coast Guard approved version: Vest may lightly differ from shown image and specifications*

*• no reflecting panels • 1 webbing belt • 1 crotch strap*

Size chart on page 144-145





01.



02.



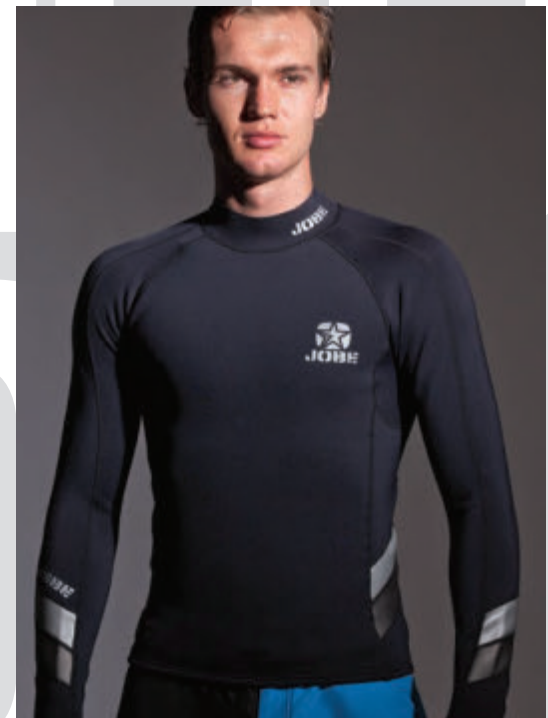
03.



04.



05.



06.





### 01. Rash Guard Loose Fit

Size: S, M, L, XL, XXL

• Baggy style rash guard • Comfortable, soft and "4-way stretch" fabric with the highest UV protection • Flat stitch seam construction  
310012010

### 02. Rash Guard Engine

Size: XS, S, M, L, XL

• Comfortable, soft and "4-way stretch" fabric with the highest UV protection • Seamless armpits for more comfort • low collar design • Flat stitch seam construction • Incl. boardshort connector  
310012008

### 03. Rash Guard Logo Series

Size: S, M, L, XL, XXL, XXXL

• Comfortable, soft and "4-way stretch" fabric with the highest UV protection • Seamless armpits for more comfort • Flat stitch seam construction • Incl. boardshort connector • This rash guard is a perfect match with the boardshort Logo Series (see page 53)  
310012012

### 04. Rash Guard Sleeveless

Size: S, M, L, XL

• Sleeveless rash guard for warm days • Comfortable, soft and "4-way stretch" fabric with the highest UV protection • Incl. boardshort connector  
310111004

### 05. Rash Guard Neoprene Select Short Sleeve

Size: S, M, L, XL

• 1.0mm neoprene with fleece inner lining for additional warmth and a soft touch • Lightweight and flexible • Comfortable Spandex sleeves • Seamless armpits for more comfort • Flat stitch construction • Seamless armpits • This rash guard is a perfect match with the boardshort Cross Flex (see page 53)  
310811019

### 06. Rash Guard Neoprene Faith Long Sleeve

Size: S, M, L, XL

• 1.0 mm neoprene with a fleece inner lining for additional warmth • 100% super stretch fabric for more comfort and flexibility • Seamless armpits for more comfort • Durable "Glide skin" panels • Incl. boardshort connector • Flat stitch seam construction  
310811018

### 07. Rash Guard Long Sleeve White

Size: XS, S, M, L, XL

• UV protection, UPF 50+ rating • Comfortable, soft and 4-way stretch fabric • Flat stitch construction  
310110004

### 08. Rash Guard Long Sleeve Grey

Size: XS, S, M, L, XL

• Comfortable, soft and "4-way stretch" fabric with the highest UV protection • Low collar design • Flat stitch seam construction • Incl. boardshort connector  
310012011

### 09. Rash Guard Thermo Sense Short Sleeve

Size: S, M, L, XL

• Short sleeve design • Comfortable, soft and "4-way stretch" fabric with the highest UV protection • "Biopoly" thermolining for additional warmth • The "Biopoly" gives extra warmth, is stretchy, strong, lightweight and fast drying • Seamless armpits for more comfort • Flat stitch seam construction • This rash guard is a perfect match with the boardshort Sense (see page 50)  
310012009

### 10. Rash Guard Thermo Sense Long Sleeve

Size: S, M, L, XL

• Long sleeve design • Comfortable, soft and "4-way stretch" fabric with the highest UV protection • "Biopoly" thermolining for additional warmth • The "Biopoly" gives extra warmth, is stretchy, strong, lightweight and fast drying • Seamless armpits for more comfort • Flat stitch seam construction • This rash guard is a perfect match with the boardshort Sense (see page 50)  
310812002

07.

08.

09.

10.

01.  
Grey



02.  
Grey

01.  
Blue



02.  
Blue

#### 01. Rash Guard Future

Colour: Grey, Blue, - Size: XS, S, M, L, XL

- Ladies rash guard with v-neck design
- Comfortable, soft and "4-way stretch" fabric with the highest UV protection
- Seamless armpits for more comfort
- Flat stitch seam construction
- Seamless armpits
- This rash guard is a perfect match with the swim short Future

Grey: 310012016 - Blue: 310111016

#### 02. Swim Short Future

Colour: Grey, Blue - Size: XS, S, M, L, XL

- Ladies "Spandex" short with belt
- Comfortable, soft and "4-way stretch" fabric with the highest UV protection
- Flat stitch seam construction
- This short is a perfect match with the rash guard Future

Grey: 310012017 - Blue: 310111017

#### 03. Rash Guard Mission

Size: XS, S, M, L, XL

- Comfortable, soft and "4-way stretch" fabric with the highest UV protection
- Flat stitch seam construction
- Low collar design
- Seamless armpits for more comfort
- Incl. boardshort connector
- This Rash Guard is a perfect match with the boardshort Mission (see page 54)

310012013

#### 04. Rash Guard Flash

Size: XS, S, M, L, XL

- Ladies rash guard with cap sleeve design
- Comfortable, soft and "4-way stretch" fabric with the highest UV protection
- Low collar design
- Seamless armpits for more comfort
- Flat stitch seam construction
- Incl. boardshort connector
- This rash guard is a perfect match with the boardshort Flash (see page 54)

310012015

#### 05. Rash Guard Stitch

Size: XS, S, M, L, XL

- Ladies rash guard with cap sleeve design
- UV protection, UPF 50+ rating
- Comfortable, soft, 4-way stretch quick drying fabric
- Seamless armpits for more comfort
- Flat stitch construction
- Seamless armpits
- This rash guard is a perfect match with the boardshort Stitch (see page 54)

310111012

#### 06. Rash Guard Thermo Charm

Size: XS, S, M, L, XL

- Comfortable, soft and "4-way stretch" fabric with the highest UV protection
- "Biopoly" thermolining for additional warmth
- The "Biopoly" gives extra warmth, is stretchy, strong, lightweight and fast drying
- Seamless armpits for more comfort
- Flat stitch seam construction
- Seamless armpits
- Incl. boardshort connector

310111005

#### 07. Rash Guard Neoprene Purple Long Sleeve

Size: XS, S, M, L, XL

- Special ladies design
- 0.5 mm neoprene body with metal coating inside for additional warmth
- Lycra arms for more flexibility
- Flat stitch construction
- Seamless armpits

310810002

#### 08. Rash Guard Ladies Neoprene Long Sleeve

Size: XS, S, M, L, XL

- 1.0 mm neoprene with a fleece inner lining at chest and back for additional warmth
- 100% super stretch fabric for more comfort and flexibility
- Seamless armpits for more comfort
- Incl. boardshort connector
- Flat stitch seam construction

310012014

Size chart on page 144-145



03.



04.



05.



06.



07.



08.



01.



02.



03.



04.

**01. Boardshort Burst Stretch**

Size: S, M, L, XL  
 Super stretch fabric for the ultimate flexibility, 90% polyester and 10% "Spandex" • Lightweight and fast drying • Lace closing with "Spandex" back panel • Back pocket drained by mesh panels  
 • Key cord attached  
 310012001

**02. Boardshort Sense**

Size: XS, S, M, L, XL, XXL  
 • Lace closing with "Spandex" back panel • Lightweight and fast drying fabric, 100% polyester • Side pocket drained by mesh panels with zipper closing • Key cord attached • This boardshort is a perfect match with the rash guard Sence Neoprene Short Sleeve (see page 47)  
 310012002

**03. Boardshort Next**

Size: S, M, L, XL  
 • Lace closing with "Spandex" back panel • Lightweight and fast drying fabric, 100% polyester • Side pocket drained by mesh panels with Velcro closing • Key cord attached  
 310012003

**04. Boardshort Subject**

Size: S, M, L, XL  
 • Lace closing with "Spandex" back panel • Lightweight and fast drying fabric, 100% polyester • Back pocket drained by mesh panels with Velcro closing • Key cord attached  
 310512002

*Size chart on page 144-145*



**BOARD  
SHORTS  
MEN**





01.  
Black

01.  
Red

02.



03.



04.

### 01. Boardshort Logo Series

Color: Black, Red

Size Black: S, M, L, XL, XXL, XXXL - Size Red: XS, S, M, L, XL, XXL

- Lace closure with "Spandex" back panel
- 100% polyester rip-stop fabric
- Lightweight and fast drying
- Back pocket drained by mesh panels with Velcro closing
- Key cord attached
- This boardshort is a perfect match with the rash guard Logo Series (see page 46)

Black: 310512003 - Red: 310412001

### 02. Boardshort Block

Size: XS, S, M, L, XL

- Lace closing with Spandex back panel
- Lightweight and fast drying fabric
- Back pocket with zipper closing, water draining mesh panel and key lace

310811001

### 03. Boardshort Cross Flex

Size: S, M, L, XL

- A special low waist design for a baggy style
- Lace closing with extra Spandex back panel
- Flex neoprene panel on the back for extra freedom of movement
- Lightweight and fast drying
- Back pocket with velcro closing
- The pocket includes water drains and key lace
- This boardshort is a perfect match with the Rash Guard Neoprene Select (see page 46)

310011001

### 04. Boardshort Star Neoprene

Size: S, M, L, XL, XXL, XXXL

- Lace closing with extra "Spandex" back panel
- This short has a 1.5 mm inner neoprene short for added warmth and protection
- Fast drying fabric
- Slit pocket with mesh lining for the better water draining

310811008

Size chart on page 144-145



01.



02.



03.



04.



05.



06.



07.





# BOARD SHORTS LADIES

## 01. Boardshort Mission

Size: XS, S, M, L, XL

- Lace closing with "Spandex" back panel
- Lightweight and fast drying fabric, 100% polyester
- Back pocket drained by mesh panels with Velcro closing
- Key cord attached
- This boardshort is a perfect match with the rash guard Mission (see page 49) 310012004

## 02. Boardshort Fame Stretch

Size: XS, S, M, L, XL

- Super stretch fabric for the ultimate flexibility, 90 % polyester and 10 % "Spandex"
- Lightweight and fast drying
- Button closing
- Back pocket drained by mesh panels
- Key cord attached 310012006

## 03. Boardshort SoHo

Size: S, M, L, XL, XXL

- Lace closure with "Spandex" back panel
- Lightweight and fast drying fabric, 100% polyester
- Back pocket drained by mesh panels with Velcro closing
- Keycord attached
- This boardshort is a perfect match with the Impact Shield Remix (see page 27) 310012005

## 04. Boardshort Charm

Size: S, M, L

- Lace closing with Spandex back panel
- Lightweight and fast drying fabrics
- Side pocket with key lace
- Hidden zipper pocket on the back side
- All pockets are water drained by mesh panels
- This short is a perfect match with the Rash Guard Thermo Fleece (see page 49) 310111010

## 05. Boardshort Flash

Size: XS, S, M, L

- Short model boardshort with double button closing
- Super stretch fabrics for the ultimate in flexibility, 90 % polyester and 10% "Spandex"
- Lightweight and fast drying
- Back pocket with mesh water drain panel
- This short is a perfect match with the Rash Guard Flash (see page 49) 310012007

## 06. Boardshort Stitch

Size: XS, S, M, L

- Short model boardshort with double button closing
- Lightweight and fast drying fabrics
- Back pocket with mesh water drain panel
- This short is a perfect match with the Rash Guard Stitch (see page 49) 310111003

## 07. Walkshort Ladies

Size: S, M, L, XL, XXL

- 100% stonewashed cotton
- With slit side pockets and back pockets 310111011

Size chart on page 144-145



# CASUAL WEAR

01.



02.



03.



**01. T-shirt Click**

Size: S, M, L, XL, XXL

- 100% soft, pre-shrunk cotton • Also available in youth sizes, see page 60-310012020

**02. T-shirt Austin**

Size: S, M, L, XL, XXL

- 100% soft, pre-shrunk cotton 310012021

**03. T-shirt Region**

Size: S, M, L, XL, XXL

- 100% soft, pre-shrunk cotton 310012019

**04. Polo Rogue**

Size: S, M, L, XL, XXL

- High quality soft, pre-shrunk cotton • Embroidered logo details 310012033

**05. Polo Grey**

Size: S, M, L, XL, XXL

- High quality 100% soft pre-shrunk cotton • Embroidered logo details 310811004



**06. Polo Long Sleeve Encore**

Size: S, M, L, XL, XXL

- High quality soft, pre-shrunk cotton • Embroidered logo details 310012037

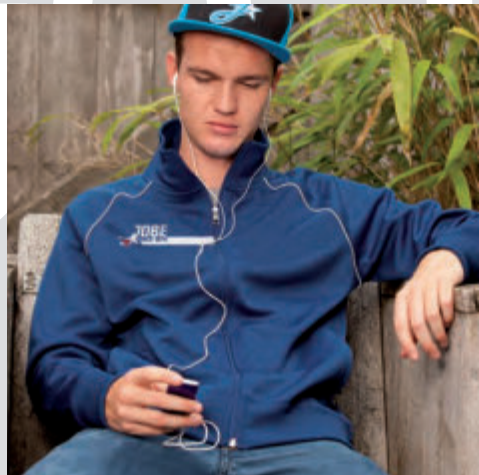
04.

05.

06.



01.



02.



03.





04.



05.



06.



07.

**01. Hooded Sweater**

Size: S, M, L, XL, XXL

- 80% cotton and 20% polyester • Embroidered logo details
  - Front pocket
- 310111002

**02. Icon Jacket**

Size: S, M, L, XL, XXL

- High quality sportive jacket • 2 front pockets
- 310012029

**03. Technical Jacket**

Size: S, M, L, XL, XXL

- High quality sportive jacket made out of wind- and waterproof fabric • fleece lining for extra warmth • 100% taped seams
  - waterproof front zip • detachable hood • velcro cuffs • elastic bottom hem • mp3 pocket inside
- 310012031

**04. T-shirt Ladies X**

Size: XS, S, M, L, XL

- 50% Cotton 50% polyester, soft pre-shrunk fabric
- 310012023

**05. Polo Ladies**

Size: S, M, L, XL, XXL

- High Quality 95% soft pre-shrunk cotton and 5% elasthan
  - embroidered logo details
- 310012024

**06. Tank Top Ladies Drops**

Size: XS, S, M, L, XL

- 55% Cotton 45% polyester, soft pre-shrunk fabric
- 311411001

**07. T-shirt Ladies Eye**

Size: XS, S, M, L, XL

- 55% Cotton 45% polyester, soft pre-shrunk fabric
- 310811003



01.



02.



03.  
Y1.1



03.  
Y2.1

**01. Jobe Cap Youth**

Size: Universal  
 • Standard flexfit cap for kids  
 310111019

**02. T-shirt Youth Click**

Size: S, M, L, XL, XXL  
 • 100% soft, pre-shrunk cotton  
 310012026

**03. Floatable Sunglasses Youth**

• Floatable frame so you will never lose your sunglasses in the water again • UV 400 protection  
 • Polarized lens • Unique designs for kids • Comes with cleaning bag  
 Y1.1: 421009001 - Y2.1: 420409001



04.



05.



06.



07.



08.



09.



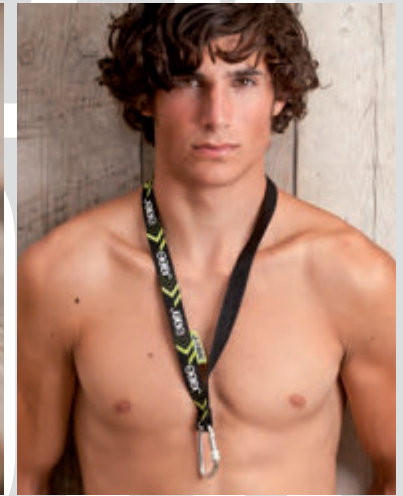
10.



11.



12.



13.

**04. City Cap**  
Size: S/M, L/XL  
• Flexfit cap with flat visor  
310012027

**09. Visor Hat**  
Size: Universal  
310012035

**05. Jam Cap**  
Size: S/M, L/XL  
• Flexfit cap with flat visor  
310012030

**10. Beanie Men**  
Size: Universal  
310011002

**06. Sync Cap**  
Size: S/M, L/XL  
• Standard flexfit cap  
310012032

**11. Beanie Ladies**  
Size: Universal  
311311001

**07. Retro Cap Ladies**  
Size: Universal  
• Flexfit cap for ladies  
310111013

**12. Watch**  
• Chronograph watch with rubber strap • Water resistant (5 ATM) • Case Diameter: 44MM  
360110002

**08. Ozzy Hat**  
Size: Universal  
310012036

**13. Keycard Deluxe**  
• With Aluminum hook  
360811004



**AUSTIN HAIR**  
4th US Pro Tour 2010



**CHRISTIAN KOESTER, CK**  
3 times British National Cable Champion

# JOBEPRO RIDERS



**MAXINE SAPULETTE**  
WWA World Cable Champion 2010



**DECLAN CLIFFORD**  
British National Cable Champion 2011



**SJORS VAN DE KERKHOF**  
Jägermeister Wake Riderz Champion 2009



**KIRSTEEN MITCHELL**  
IWWF World Cable Champion 2010





## WAKEBOARD SPECS



### Continuous Rocker

Smooth, continuous arch. A "continuous rocker" has a smooth curved shape. Wakeboards with a "continuous rocker" provide fast, smooth rides and allow you to hook up turns more easily. You can generate a lot of speed on a "continuous rocker" wakeboard. Speed and a very predictable "pop" (height) when you hit the wake will shoot you further out into the flats. "Continuous rocker" wakeboards are great for carving, especially on those glassy-smooth mornings. Difference in rocker/fin reflects variation in size



### 3-stage Rocker

Angled with a "flat spot" in the center. A wakeboard with a "3-stage rocker" features three distinct planes on the bottom of the board. A "3-stage rocker" causes your wakeboard to respond with more "pop" (height) when you hit the wake. Boards with a "3-stage rocker" have a flat spot which makes the impact of landings intense and gives a slight sluggish (slow) feeling after landing. One thing is for sure, you're more stable. Difference in "rocker"/fin reflects variation in size



### Hybrid Rocker

The "hybrid rocker" features a blend of "continuous" and "three-stage rockers" and brings the best of both worlds: fast pop and consistency. The aggressiveness of the "3-stage rocker" on the edge and the stability of the "continuous rocker" in the center of the board is the perfect combination of "rockers" that makes these boards fast and stable. Difference in "rocker"/fin reflects variation in size



### 6" Insert Setup

The new standard for our wakeboards since 2010. Makes the board compatible with bindings with 6" plates



### 8" Insert Setup

Makes the board compatible with our basic wakeboard bindings with 8" plates like the Static and the Strike bindings



### Bullet Reinforcement

Durable built in ABS/plastic reinforcements inside the fins and the "rails" of the board to help the board sustain and live better thru "rail grind" and other park use. ABS is a very strong and durable solid thermoplastic



### 1.0" Polycarbonate/Plastic Fins

React quickly and provide a better overall "edge hold". Cable park obstacle friendly



### 1.3"/1.7" Plastic Fins

A quick releasing and reacting profile, better edge hold and a smooth release



### Flat Top Tech

A completely flat top for a "snappier" more lively board to binding feel



### Rolled Edge

Helps to prevent the board from splitting at the edges. The rolled edge positions the seams of the edges at the top-side of the board instead of at the base. This way you can hit "kickers" and "sliders" without any worries. Furthermore, it makes the board sit higher in the water for more speed



### Hybrid Edge

"Rolled edge" at the midsection which blends into sharp end rails towards the tip and tail for more "edge hold" and aggressive cuts. The "rolled edge" midsection allows for easier sliding over "edge" and prevents damage to the edges



### PTEX Grind Base

Indestructible protective base laminate built to resist much more damage by "sliders" and "kickers" than any other regular wakeboard bases. In comparison to others, this base makes the difference on "sliders" and "kickers" and is amazingly fast on obstacles



### Molded In Fins

Integrated fins that improve the board's grip in the water and provide stability when landing



### Thinner Profile

Less swing weight equals more control and speed



### Thinner and wider profile

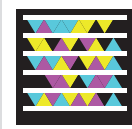
A lighter more responsive ride with more surface area for improved control

*Warranty on all wakeboards will be cancelled if used on obstacles such as "kickers" and "sliders".*





RIDER: AUSTIN HAIR



01.

**01. Austin Series**

Size: 133, 137, 141



Together with US Pro rider Austin Hair we've made this striking "graphic". Austin Hair is a world-class professional wakeboarder and wakeskater and has been competing on the Pro Wakeboard Tour since 2005. The Austin Series is one of our top pro line boards but generally any rider can "shred rails" with it • The Austin series delivers speed, "pop", and control • The unique flex lay-up helps retain "snap" and "pop" over time • It's got a squared tip and tail and four "reinforced molded" fins, which allow a steady press on any type of "rail" • The "bullet reinforcement" makes it super strong, "grind ready" and it also helps to improve the board's grip in the water and provides landing stability • 2.6"/2.7"/2.8" Explosive and fast "hybrid rocker": Our secret recipe for speed, balance and "pop" 270012009

Size chart & specifications on page 144-145



01.

01. Click Series

Size 139, 143



Christian Koester has been Jobe's showpiece for years. With his unique wakeboarding style CK has developed into one of the best cable park riders in the world. In close cooperation with Christian Koester himself, Jobe has developed a "shape" and "graphic" which matches perfectly with his wishes. He wanted a fast, stable board with the perfect hold on water • With that in mind we designed a "hybrid rail" that doesn't go all the way down the side but turns into a sharp edge towards the "tip" and "tail" • In combination with the 0.6"/0.7" high "molded in" fins at the end of the extra wide tip and tail, this board has everything you need for a perfect release, plenty of grip and an explosive "pop" off the wake • The 2.6"/2.7" "continuous rocker" makes the board very fast  
270812001

Size chart & specifications on page 144-145





RIDER: CK (CHRISTIAN KOESTER)





01.

**01. Brigade Series**

Size: 134, 139



- This board still has the only true "flat top deck" in the industry and is now built to take more abuse around the obstacles than ever before
- Explosive "rocker" that carries a lot of speed into the wake and out to the flats, delivers smooth carving with a crisp turn in
- Super clean bottom makes landings softer than ever; less is more
- The "flexi" attitude of the Brigade allows riders of all levels to "shred rails" and press to their heart's content
- 2.45"/2.55" "Hybrid Hard Rocker": Big clean "pop" when you want it, without having to stomp out a hard landing
- Four 1.0" polycarbonate fins

270012003

Size chart & specifications on page 144-145



RIDER: DECLAN CLIFFORD





RIDER: CK (CHRISTIAN KOESTER)



02.

**02. Guerrilla Flex Series**

Size: 137, 142



- Jobe's modified new indestructible "slider board" series for intermediate to advanced cable park riders • This year with more flex than before due to a thinned out profile, especially at the tip and tail • The hybrid wood & foam "core" makes a perfect combination of flex and stiffness • Flex-zones for clean and stylish "nose" and "tail presses" on rails, but still stiff enough for solid landings after big "kicker" hits • The durable "PTEX Grind Base" minimizes damage by "sliders" and "kickers" which allows for some serious "rail & kicker" sessions • The 100% "flat base design" ensures that the board will not snag on "rails & kickers" • Adjustable 0.6" four nylon fin design
- Each fin contains 6 holes that allow the fin to be moved forward or back to meet your demands • 2.32" / 2.52" Subtle "3-stage rocker" with a strong ABS sidewall

270012004

Size chart & specifications on page 144-145



RIDER: SJORS VAN DE KERKHOF



01.

**01. Vanity Series**

Size: 131, 136, 141

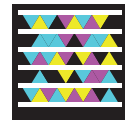


- With Jobe Rider Sjors van de Kerkhof's approval on the "graphic", it's one of the most stable, fun, and easy to ride boards we have ever had the pleasure to design
- The Vanity has a long history and still proves itself as being a top favorite for many of our team riders and fans
- The "continuous rocker" makes the board fast, but still gives you a controlled "kick" off the wake
- This year with a wider stance for more control and stability
- Responsive and friendly shape for riders of all levels, whether you're a pro or a novice you will feel like a pro on this ride
- The four "molded in" fins add a lot of stability during takeoff and landing
- 0.5"/0.6"/0.7" deep "molded in" fins
- 2.6"/2.7"/2.8" "Progressive continuous rocker"

270012007

Size chart & specifications on page 144-145





02.

## 02. Artist Series

Size: 132, 137, 142



3-STAGE



6° INSERT



PC FINS



MOLDED FINS



HYBRID EDGE



THIN PROFILE

- The "graphic" for this year's Artist Series is created by the German artist Gregor Dashuber, a Berlin-based graphic artist and 2D animator. His raw and distinctive drawing style has never been seen before in the wakeboard scene, which makes this series rather exceptional
- The Jobe Artist Series is built to provide a clean "pop" off the wake and a well-balanced ride
- With four moderate "molded in" fins providing traction and stable feeling, the Artist is sure to provide a relaxed ride on the water to riders of all levels
- Solid overall feel on the water that will relax your style
- 2.55"/2.65" "3-Stage Rocker": The shape allows a big "pop" as well as soft landings
- The Artist is a very playful board with big "rocker" lines

270012002

Size chart & specifications on page 144-145





01.

**01. Region Series**

Size: 139, 143



- With sharp rails in the "tip" and "tail", the Region edges hard and fast once on edge • The "hybrid rail" helps it sit a bit higher to carry more speed into the wake and release cleanly • More profiled "flat spot" towards the center helps soften landings and stable feeling when you "pop" off the wake • 2.7"/2.8" "3-Stage Rocker": "Pop" the old fashioned way, big, up, and still with a soft landing • Four 1.0" polycarbonate fins allow you to stay tuned while you edge into the wake

270412001

Size chart & specifications on page 144-145



RIDER: DECLAN CLIFFORD





RIDER: DECLAN CLIFFORD



02.



02. Republik Series

Size: 127, 135, 140

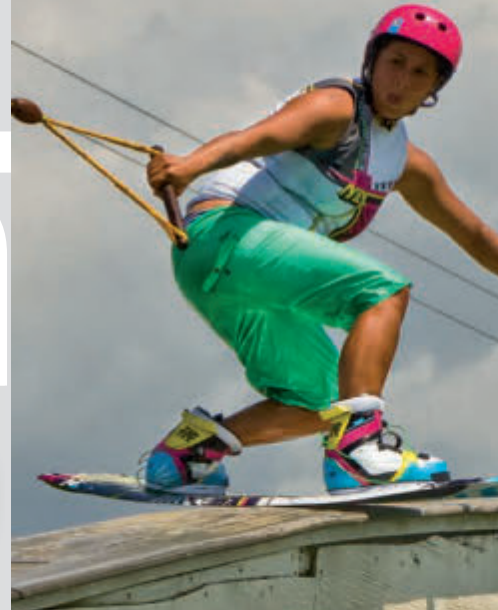


- With a thinned out and wide profile the Republik has more surface area which gives you a stable feeling and a clean soft landing
- Unique small "molded in" fin design allows the rider a controlled fast approach with an explosive "pop"
- Clean bottom design with slight cups to the rails and no gimmicks
- 2.6"/2.7" "3-Stage rocker": A clean approaching line with an explosive boot off the wake

270812002

Size chart & specifications on page 144-145

RIDER: MAXINE SAPULETTE



01.

01. Max Series

Size: 131, 136



Maxine Sapulette is by far the world's best female cable rider. She is a Jobe "team member" since a long time and has a name for being totally different than all other female riders. Maxine is absolutely not a girly girl, making her "pro series" not an average woman's board. Maxine is tremendously stylish, ambitious and distinctive. Her character perfectly matches the Jobe brand and especially the Jobe Max Series • The Max Series is not just another male shape with a girls graphic; but a Vanity with a unique designed torsional "flex lay-up" specially made for female riders • The aggressive "continuous rocker" line gives the board a strong "pop" and makes the shape very fast • Responsive and friendly shape for riders of all levels, whether you're a pro or novice you will feel like a pro on this ride • The four "molded in" fins add a lot of stability in takeoff, landing and smooth transitions into the wake • Four 0.5"/0.6" "molded in" fins • 2.6"/2.7" Fast "continuous rocker". 270012006

Size chart & specifications on page 144-145

WAKE BOARDS LADIES

02. Isis Series

Size: 132, 137



- The Isis is a uniquely shaped board built to offer a well balanced ride. A slightly "hybrid rail" across the center to break up some turbulence on the water, combined with a softer specific flex, make it the perfect board for first-time and intermediate riders as well
- Provides a clean "pop" off the wake
- With four moderate "molded-in" fins providing the traction and stable feel needed, the Isis is sure to provide a relaxed ride on the water to riders of all levels
- 2.45"/2.55" "3-Stage rocker": "Pop" the old fashioned way, big, up, and still with a soft landing

270012005

03. Pearl Series

Size: 127, 135

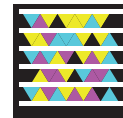


- Board for female riders of all levels with a more relaxed feel and easier water starts
- The "wider profile" along with its unique sharp "molded in" fin design gives the rider a controlled feeling with a stable and soft landing
- The 2.6" "3-Stage Rocker" helps you get nice smooth "pop" off the wake
- The Pearl features a "thinner profile" for maximum weight reduction and better flex.

270012001



02.



03.



RIDER: KIRSTEEN MITCHELL



Size chart & specifications on page 144-145



01.



### 01. Republik Package

Republik + Republik Bindings + Transp. Wakeboard Bag  
 Size Republik Board: 127, 135, 140 - Size Republik Binding: JR, 5/8, 8/11, 11/14



- With a thinned out and wide profile the Republik has more surface area which gives you a stable feeling and a clean soft landing
- Unique small "molded in" fin design allows the rider a controlled fast approach with an explosive "pop"
- Clean bottom design with slight cups to the rails and no gimmicks
- 2.6"/2.7" "3-Stage rocker": A clean approaching line with an explosive boot off the wake
- Republik 127 + Republik Bindings: 278812007
- Republik 135 + Republik Bindings: 278812008
- Republik 140 + Republik Bindings: 278812009

Size chart on page 144-145



# WAKE BOARD PACKAGES



02.  
TRX



02.  
Logo series



03.  
WINNER DESIGN  
CONTEST - Tag



03.  
Cult

### 02. TRX & Logo Series Packages

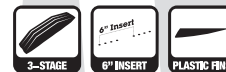
TRX 138 + Maze Bindings + Transp. Wakeboard Bag  
 Logo Series 138 + Maze Binding + Transp. Wakeboard Bag + Blue Star Cap  
 Size Maze Binding: Standard



- Well balanced rides with stability being provided by a long based "molded in" fin style with tremendous hold
  - The outer "molded in" fins allow for stability on the water and the optional center fins offer extra traction when you want it
  - Add this to a "progressive continuous rocker" and you get a board which allows smooth carving and has a predictable "pop"
  - These wakeboards are sure to improve riding ability with their strong tracking, consistent "pop" off the wake, and quick transitions "edge" to "edge"
  - 0.9" deep "molded in" fins • 2.8" Subtle 3-stage "rocker" • "V" kinked" bottom
- TRX 138 + Maze Bindings: 278812012  
 Logo Series 138 + Maze Bindings: 278812005

### 03. Tag & Cult Packages

Tag 138 + Native Bindings + Wake 2 Wake Combo Advanced EVA + Transp. Wakeboard Bag 142 Jobe  
 Size Native Binding: 5/8, 8/11, 11/14  
 Cult 138 + Maze Bindings + Package Wakeboard Rope + Transp. Wakeboard Bag  
 Size Maze Binding: Standard



- The "graphic" for the Tag wakeboard is designed by the "wakeboard design contest" winner Rens Prins from the Netherlands
  - The steady and effortless Cult and Tag rides have a unique shape exclusively designed for Jobe
  - You won't see the unique vented channels and super sharp edges on any other wakeboard, they allow for strong "edge hold" and great stability and "pop"
  - Perfect board for beginner to intermediate riders
  - 2.2" subtle "3-stage rocker"
- Tag 138 + Native Bindings: 278812003  
 Cult 138 + Maze Bindings: 278812001



01.  
Saint



01.  
2020



02.

### 01. Saint & 2020 Packages

Saint 141 8" spread + Strike Binding Red 8" Plate + Package Wakeboard Rope + Transp. Wakeboard Bag  
 Size Strike Bindings: Standard, XL  
 2020 (twenty twenty) 142 + Maze Bindings + Package Wakeboard Rope + Transp. Wakeboard Bag  
 Size Maze Binding: Standard



- The easy to ride 2020 and Saint wakeboards are designed to help teach new riders the fundamentals of wakeboarding while providing a super fun time with family and friends • With a wider and rounder profile than most other boards, deep water starts and smooth carving are a snap • These features along with a smooth "continuous rocker line", help beginners with the smoothest of transitions into the wake and stable "pops" coming off of it • The "convex bottom" improves the riders' confidence due to its more forgiving feel • 2.3" "continuous rocker": a consistent, smooth reliable transition into the wake each and every time • The "wider profile" base promotes learning and adds stability when getting out of the water • The dual "venturi stabilizing tunnels" help hold the boards edge into the wake for additional tracking and stability

Saint 141 + Strike Bindings: 278812004  
 2020 141 + Maze Binding: 278812006

### 02. Brooklyn Package

Brooklyn 139 + Strike Binding Red + Package Wakeboard Rope + Transp. Wakeboard Bag  
 Size Strike Bindings: Standard, XL



- The Brooklyn is an ideal board for chilled out carving sessions • 2.2" subtle "3-stage rocker" • The foam "core" is reinforced with fiberglass, Formica and stringers • One of the two wakeboards in our range with a lightweight injection molding construction • Two 0.9" plastic centre fins • Perfect board for beginner to recreational riders  
 Brooklyn 139 + Strike Bindings: 278812002





03.  
+ Native Bindings

03.  
+ Maze Bindings

### 03. Ascend Package

Ascend 132 + Native Bindings + Package Wakeboard Rope + Transp. Wakeboard Bag  
 Size Native Binding: 5/8, 8/11  
 Ascend 132 + Maze Bindings + Package Wakeboard Rope + Transp. Wakeboard Bag  
 Size Maze Binding: Standard



- The Ascend is a well-balanced wakeboard for youngsters which provides a clean "pop" of the wake
- The playful yet relaxed characteristics make this board perfect for young riders
- The Ascend is a reliable board on which youthful riders can build their confidence but on the other hand can step their game up as well
- The four moderate "molded in" fins provide traction and a stable feeling
- 2.45" "3-Stage Rocker" allows a big "pop" as well as soft landings

Ascend 132 + Native Bindings: 278812014  
 Ascend 132 + Maze Bindings: 278812013

Size chart on page 144-145



04.  
+ Junior Bindings

04.  
+ Access Wake Sandals

### 04. Jinx Junior Package

Jinx Junior 128 + Junior Wakeboard Binding + Junior Wakeboard Rope w. Handle + Transp. Wakeboard bag  
 Size Junior Wakeboard Binding: PCS.  
 Jinx Junior + Access Wake Sandals  
 Size Access Wake Sandal: XS/S



- Our uniquely shaped and newest junior wakeboard!
- The four base channels and subtle "molded in" fins allows for more grip during carving
- The foam core is reinforced with fiberglass, formica and stringers
- One of the two wakeboards in our range with a lightweight injection molding construction
- 2.6" continuous rocker
- Two 0.9" plastic centre fins for a stable feeling
- Solid board for beginning juniors

Jinx Jr. 128 + Junior Wakeboard Binding: 278812011  
 Jinx Jr. 128 + Access Wake Sandals: 278812010

## WAKEBOARD BINDING SPECS



### 6" Plate

The standard for our high-end bindings. 6" binding (base) plates are standard on most of our wakeboard bindings since 2010. The 6" binding plates are lighter, stronger and have less torsional flex. The new 6" binding plates coupled with the "6" insert setup" on a wakeboard gives you unlimited stance options



### 8" Plate

Makes the binding compatible with our "8" insert setup" wakeboards like the Brooklyn and the Jinx



### Comfort Liner

Custom formed to fit the contours of your foot for the maximum in comfort, fit and finish. Three levels and blends of foam covering help the "liner" conform to your foot like it is one with it



### Easy Wrap Liner

Untie the binding and experience how easy this "wrap liner" opens up when you slide your feet into the binding. Once tightened the "wrap liner" conforms to your foot and gives maximum support and fit. The construction and foam layers are composed to make this "wrap liner" stiffer than the "Comfort liner"



### Articulated Heel/Ankle Assembly

Makes the upper part of the bindings move along easier with your lower legs, while still giving all the necessary support you need



### Dual Lacing

Tighten and loosen the laces on the upper ankle section and the lower foot section independently



### Velcro Straps

Three 4.5 cm/1.8" heavy duty Velcro straps. Allow fast entry and exit. Significant alternative if you're a cable park rider and you have to get in and out of your bindings quite some times during a session



### Easy Attach Lace Holder

Attach the laces to the binding fast and easy with a press stud system to prevent them from getting in the way during the ride



### Achilles Kidneys

Locks your Achilles in place and helps keeping your ankle positioned properly in the back of the binding to ensure proper foot placement and support



### Stretch Panel

The flexible panel on the heel allows for all the necessary extra movements you need during a ride once you're wrapped into a rigid binding



### Webbing Lace Pull Loop

Allows you to clinch down the laces to be completely locked in



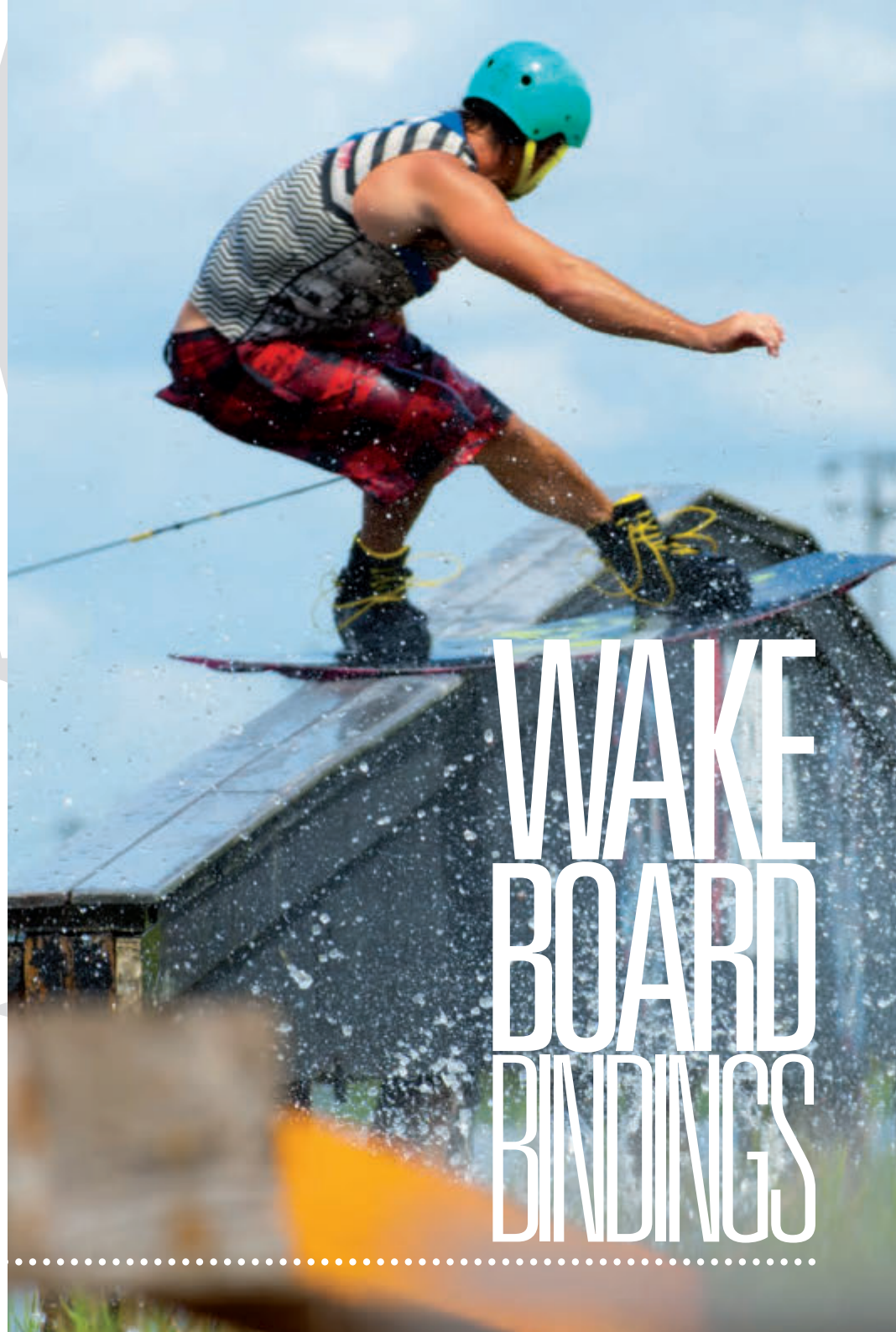
### Dual Density Footbed

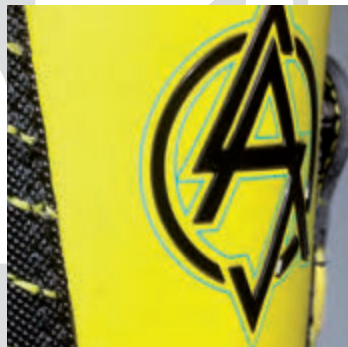
Soft ergonomic shaped footbed which absorbs the biggest blows on the water but at the same time gives you all the comfort you need



### Adjustability

For a large range of various foot sizes





01.

### 01. Austin Bindings

Size: Size: 4.5/5, 6, 7/7.5, 8/8.5, 9, 10, 11/12



• With Austin's approval on the design we have developed this newest and most aggressive looking binding in our binding range • This isn't our stiffest binding, but it combines support with flex due to a custom designed "comfort liner" and the "articulated heel/ankle assembly" which allows for "edging power" and more response from your board • The tight fitted "comfort liner" makes you feel one with the binding • Add features such as the "dual lacing system", "stretch panel" and a "dual density" footbed and you have a serious high end binding to take on the competition  
390012005

Size chart on page 144-145



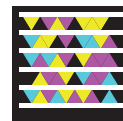
02.

### 02. Click Bindings

Size: 4.5/5, 6, 7/7.5, 8/8.5, 9, 10, 11/12



• Together with CK we developed this all new impressive Click binding • It's the most solid and highest binding in our range, once you've locked both laces all the way up you will feel secure and in control • To compensate the stiffness of this high binding we added unique flex zones at the ankle and at the top of the heel as well, which allows for all the movement you need during a ride • The rigid back design helps the wakeboard react as quickly as it can • The perfectly tailor made "comfort liner" puts the cherry on the pie and makes this a great and supportive binding  
390812001





01.

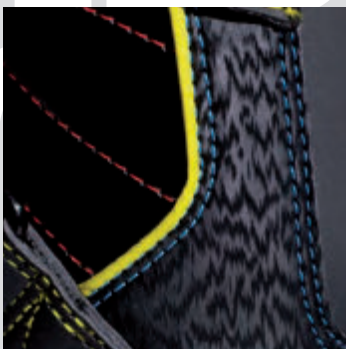
### 01. Brigade Bindings

Size: 4.5/5, 6, 7/7.5, 8/8.5, 9, 10, 11/12



• Our most rigid binding in the range with the fastest entry and exit times due to the "easy wrap liner" and the three heavy duty Velcro straps • This new "easy wrap liner" is rather stiff and really locks your foot in the binding once the straps are tightened, this allows for faster turns and no delay for aggressive riders • The Velcro straps make sure that you have enough support and feel tuned in on the water • The flex zones on the ankle area and on the heel bring all the necessary flex you need into this strong and rigid binding • Expect all other necessary bells and whistles to be featured on this high end binding

390012003



02.

## 02. Vanity Bindings

Color: Black, White - Size: 5/8, 8/11, 11/14



- The Vanity binding has gone through a "great makeover" due to its new flamboyant looks and the heavy duty Velcro straps which have replaced the laces
- Still it's designed to meet the demands of the open toe high end rider who doesn't want to switch to a closed toe binding
- The Velcro straps allow fast entry & exit and make sure that you have enough support and feel tuned in on the water
- The flex zones on the ankle area and on the heel bring all the necessary flex you need
- Add features such as the "comfort liner", "stretch panel" and a "dual density" footbed and you have a serious open toe high end binding

Black: 390012004 - White: 390112002

Size chart on page 144-145



02.



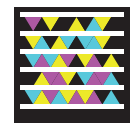
01.

**01. Deluxe Bindings**

Size: 4.5/5, 6, 7/7.5, 8/8.5, 9, 10, 11/12



• We took the Deluxe back to the drawing board and created a one-piece constructed closed toe binding which suits all riders from beginner to pro • The improved durable lacing system allows easy locking & loosening of the laces and a snug fit in combination with the "webbing lace pull loop" • The clean black and white overlay design makes this binding look hot on every wakeboard • Although it's still one of our lowest cut bindings, we've made the binding slightly higher for a bit more support at the heel, but it lets you poke out your grabs with ease • With the "dual density" footbed, easy attach "lace holder" and super comfy "inner liner" you have a genuine wakeboard binding which lasts  
390012002



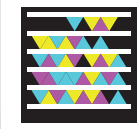
02.

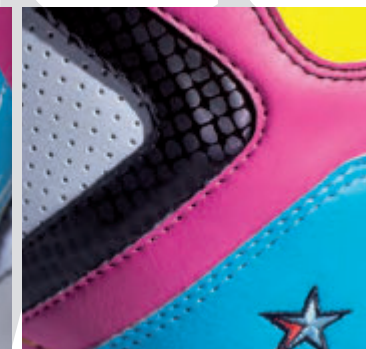
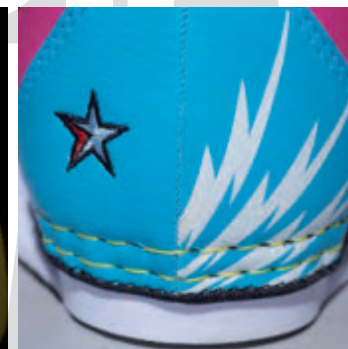
**02. Republik Bindings**

Size Republik: Junior (4.5/7.5), 5/8, 8/11, 11/14



• Why change something that works? With pride we present the Republik bindings based on the durable and reliable former Native and Riot bindings • Still one of the lightest, most supportive and comfortable bindings on the market today • No gimmicks but just a pure and simple binding with all the necessary features you need for a great ride on the water  
Republik: 390812004  
Republik Junior: 390812004





03.

### 03. Pearl Bindings

Size Pearl: 5/8



- Why change something that works? With pride we present the Pearl bindings based on the durable and reliable former Native and Riot bindings
- Still one of the lightest, most supportive and comfortable bindings on the market today
- No gimmicks but just a pure and simple binding with all the necessary features you need for a great ride on the water
- The Pearl has a custom designed "comfort liner" to fit women's feet perfectly

390112001



04.

### 04. Max Bindings

Size: 6/7, 8, 8.5/9.5



- With Maxine's approval on the cool old school sneaker design we have developed this all new closed toe binding for ladies
- The improved durable lacing system allows easy locking & loosening of the laces and a snug fit in combination with the webbing lace pull loop
- Although the binding has a one-piece construction, it still has the flexibility to tweak out moves
- The overlay design is a true match with the wakeboard graphic design
- Also equipped with the "dual density" footbed, "easy attach lace holder" and an "inner liner" designed for women's feet

390012001



Size chart on page 144-145



01.



02.



03.

### 01. Conquer Bindings

Size: 6/7, 8, 9, 10, 11, 12/13



- Jobe's first flexible low-cut profile closed toe binding designed with the easiest of entry and comfort
- The softest and most comfortable shell surroundings available
- Solid overall feel, control, and comfort allows riders of all levels to carve out a quick session on the water and still provide the stiffness and performance you would expect in a closed toe binding

390011002

### 02. Static Bindings

Size: Mini, Standard, XL



- Classic and comfortable binding for riders of all levels
- Designed for virtually every rider with any foot size that is looking for a comfortable and easy adjustable setup to encounter all water terrains
- The comfortable fit of the Static makes the rider focus on a longer session and the progression riding a wake can bring
- A confidence building boot that multiple riders can share with a wide range of foot sizes

390812003

### 03. Strike Bindings

Size: Standard, XL



- The adjustability and easy entry make the Strike binding unique in its price range
- Because of the one piece overlay this binding can be used by a wide variety of users
- The front lace is easy in use and perfect to tighten the bindings to your wishes

390810001

Size chart on page 144-145

### 04. G-Tool

- Small handy tool to setup your gear
- Stubby ratchet handle
- 5 different bits

380200005

### 05. Lava Juice

Size: 16Oz/0,48L - 128Oz/3,84L

- World's leading brand in binding slime for all binding use
- Not harmful to the environment

361101002      16Oz/0,48L - 128Oz/3,84L



04.

05.  
16Oz/0,48L  
128Oz/3,84L





01.



02.



### 01. Savage Wakeskate

Size: 43"/109 cm

• Subtle ribbed EVA deck • 9 layer maple wood laminate • Weight 3.6 KG/7.9 LBS • "Continuous rocker" • PU-coated base graphic • Two 0.9" plastic fins  
270011009

### 02. Exceed Wakeskate

Size: 41"/104 cm, 43"/109 cm

• The Exceed wakeskates have a new shape with high concave EVA top decks as an extra feature • The concave deck gives you more control and a stable feeling during your skate session • Subtle ribbed EVA top layer • 14 layer maple wood laminate • Weight 41": 4.4 KG/9.6 LBS • Weight 43": 5.6 KG/12.3 LBS • "Continuous rocker" • PU-coated gloss finished base graphic • Two 0.9" fins  
270011010

### 03. Union Wakeskate

Size: 43"/109 cm

• A completely new design, the Union wakeskate has a fully wooden concave shape • The concave deck gives you more control and a stable feeling during your skate session • Grip tape deck • 25 layer maple wood laminate • Weight 5 KG/11 LBS • "Continuous rocker" • PU-coated gloss finished base graphic • Two 0.9" fins  
270011011

Size chart & specifications on page 144-145



03.



# WAKE SKATES



# KNEE BOARDS



01.



01.



02.



03.



04.



05.



06.

HandleHook



01. Prophecy & Tempest

• The combined wider based "tip" design and "molded in" fins help make it a fun and comfortable board for all users • The "molded in" fins provide added stability, yet still allow maneuverability • Kneeboarders of all levels will appreciate the stability and advanced riders will like the extra width under the knees which helps soften landings and promote spins • The Tempest has an ergonomic seat pad for added comfort and a "single locking strap" • The Prophecy has extra high end features like a "dual density" ergonomic seat pad and a "double lock strap"

Prophecy: 250012003  
Tempest: 250012001

02. Chilipepper

• Designed for today's beginner to intermediate level kneeboarders • "Swallow-tail design" helps to initiate turns and promote spins • Thin & wide profile with "twin-tip design" enables it to cut deeper and harder into the water while on edge • Ergonomic seat pad for added comfort and a "single locking strap"

250211001

03. Shock

• The "parabolic twin tip" ensures maximum lift and smooth transitions during tricks • Beveled edge for a smooth, fluid and forgiving ride • Strong 3" neoprene padded webbing "double locking strap" • Includes a "shock-strap" which absorbs big blows on the water • The "handle-hook" allows beginning riders to get up easy and quickly and then automatically retracts flush with the deck when not in use • Ergonomic seat pad with deep knee wells for added comfort

250011001

04. Justice

• "Swallow-tail design" helps to initiate turns and promote spins • Beveled edge for a smooth, fluid and forgiving ride • Strong 3" neoprene padded webbing "single locking strap" • Includes "shock-strap" which absorbs big blows on the water • The "handle-hook" allows beginning riders to get up easy and quickly and then automatically retracts flush with the deck when not in use • Ergonomic seat pad with deep knee wells for added comfort

250012004

05. Justice Kneeboard Package

Justice Kneeboard + Vest + Kneeboard Combo Handle + Transp. Bag  
258812004

06. Shock Kneeboard Package

Shock Kneeboard + Universal Vest Red + Kneeboard Combo Handle + Transp. Bag  
258812002

07. Shock Strap Only

• Fits on any kneeboard strap • Turns your standard kneeboard strap into a tight belt which absorbs hard blows on the water  
250807001

08. Double Lock Strap 3"

250805001

09. Single Lock Strap 3"

250805002

Size chart & specifications on page 144-145

07.



08.



09.





01.



02.



03.



04.



05.



06.



07.

### 01. Virtue

Size: 67"/170 cm, 59"/150 cm

- Beginner - intermediate deluxe injection molded combo pair
- Can be used as either combo skis or as an entry-level slalom ski
- Foam lined adjustable horseshoe bindings with trigger adjustment
- Tunnel bottom for more stability
- Bright yellow fins for visibility
- Has inserts for a "stabilizing bar"
- UV-coated gloss finish

### 02. Pride

Size: 67"/170 cm

- Beginner - intermediate injection molded combo pair
- Can be used as either combo skis or as an entry-level slalom ski
- Foam lined adjustable horseshoe bindings with trigger adjustment
- Tunnel bottomed for more stability
- Bright yellow fins for visibility

### 03. Allegre

Size: 67"/170 cm, 59"/150 cm

- Beginner - intermediate injection molded combo pair
- Can be used as either combo skis or as an entry-level slalom ski
- Foam lined adjustable horseshoe bindings with trigger adjustment
- Tunnel bottomed for more stability
- Bright yellow fins for visibility

### 04. Silk Ladies

Size: 59"/150 cm

- Beginner - intermediate injection molded combo pair for ladies
- Can be used as either combo skis or as an entry-level slalom ski
- UV-coated gloss finish
- Foam lined adjustable horseshoe bindings with trigger adjustment
- Tunnel bottomed for more stability
- Has inserts for a "stabilizing bar"
- Bright yellow fins for visibility

### 05. Tail Weights

- Easy to mount on the tail of a ski with a 3-screw fin system
- The tail of your ski will drop deeper in the water to make water starts easier and consistent

2 PCS: 200805001

### 06. Stabilizing Bar

Size Standard for 62", 65" and 67" combo/slalom skis - Size Junior for 59" combo skis

- Use this bar between your skis for a stable and predictable ride
- Easy for deep water starts

Standard: 200805002 - Junior: 200805003

### 07. Ski Flag Flame Orange

Size: 200 x 14 cm  
210305001

Size chart & specifications on page 144-145

# COMBO SKIS



08.

## 08. Hemi Series

Size: 59"/150 cm, 62"/157 cm, 65"/165 cm

- Beginner - intermediate injection molded combo pair
- Can be used as either combo skis or as an entry-level slalom ski
- Wider "tip" profile and double v bottom for additional stability with deep water starts
- Great ski to teach people how to ski and provides added confidence to skiers of all levels
- Foam lined adjustable horseshoe bindings with trigger adjustment
- Bright yellow fins for visibility
- Has inserts for a "stabilizing bar"
- UV-coated gloss finish

200012002



01.



02.



03.



04.



05.



06.



07.



08.

# COMBOSKI PACKAGES

## 01. Classic Ski Package

Classic Combo + Universal Vest + Classic Handle + Display Box + Flag  
Retro-styled classic combo ski package • Packed in a stylish carton display box  
208812001

## 02. Pride Ski Package

Pride Combo + Universal Vest Yellow + Kick Off Rope + Transp Bag + Flag  
208812003

## 03. Allegre 67" Ski Package

Allegre Combo + Universal Vest Red + Kick Off Rope + Transp Bag + Flag  
208812005

## 04. Allegre 59" Ski Package

Allegre Junior Combo + Starter Vest Red + Kick Off Rope + Transp. Bag + Flag  
208812006

## 05. Ladies Silk Ski Package

Silk Combo + Universal Vest Yellow + Kick Off Rope + Transp Bag + Flag  
208812010

## 06. Hemi 65" Ski Package

Hemi 65" Combo + Universal Vest Yellow + Kick Off Rope + Transp Bag + Flag  
208812009

## 07. Hemi 62" Ski Package

Hemi 62" Combo + Universal Vest Yellow + Kick Off Rope + Transp Bag + Flag  
208812008

## 08. Hemi 59" Ski Package

Hemi 59" Combo + Universal Vest Yellow + Kick Off Rope + Transp Bag + Flag  
208812007



09.

#### 09. Hemi Trainers

Size: 46"/117 cm - Included: 'Learn to ski' DVD

- The best way to teach kids how to ski
- Detachable "stabilizing bar"
- Wider profile bottom injection molded combo trainers for easier starts
- Has inserts for a "stabilizing bar"
- Foam lined adjustable horseshoe bindings with trigger adjustment
- Bright yellow fins for visibility
- Towrope with two handles
- UV-coated gloss finish

200012001

#### 10. Buzz Trainers

Size: 46"/117 cm

- Wooden combo pair for kids
- Transparent coated sidewalls for best protection
- Towrope with two handles
- Adjustable horseshoe bindings with trigger adjustment
- Bright yellow fins for visibility
- Durable Formica top and base
- Includes detachable "Stabilizing bar" between skis for stability

200010003

Size chart & specifications on page 144-145



10.



11.

#### 11. Buzz Ski Skimmer

Size: 48"/122 cm

- Large wooden surface area for learning to ski the easy way
- horseshoe bindings with soft footbeds
- Durable Formica top and base
- Transparent coated sidewalls for best protection
- Towrope with two handles

200010002

#### 12. Dolphi Trainer

Deflated size: 55" x 37"/140 x 94 cm

- The Jobe Dolphi Trainer is developed to learn children to waterski
- Possibility to make a dry start
- Easy to re-board from the water or ski platform
- Inflatable seat which can easily be folded down when progressing to the next ski level
- Inflatable floor
- Full nylon cover/heavy duty PVC
- 2 Flat webbing handles
- 2 air chambers
- 2 water drains
- 2 speed valves
- Rider capacity: 1 person
- Including trainer handles, tow handle and 32ft PE line

230511007



12.



COMBO  
SKIS  
YOUTH





**GUILLAUME DUVERNOY**  
7th at World Championships 2009



**NANCY CHARDIN**  
2 times U21 Jump World Champion



**BOJAN SCHIPNER**  
U21 Jump European Champion 2010



**JOSHUA BRIANT**  
2nd Overall World Championship Junior 2010

# JOB PRO SKIERS



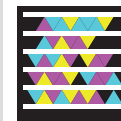
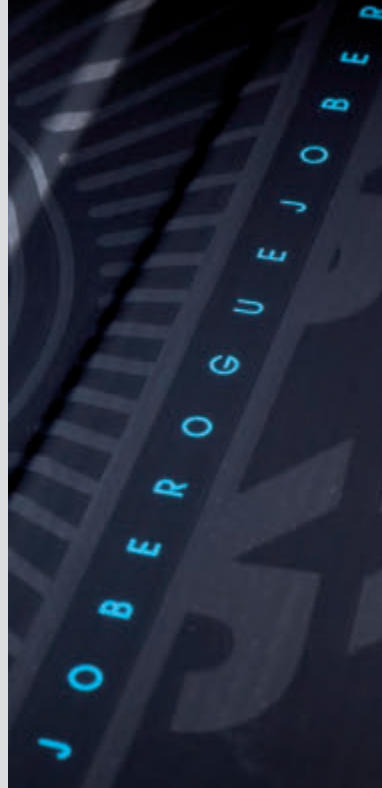
SKIER: GUILLAUME DUVERNOY



# SLALOM SKIS



SKIER: JOSHUA BRIANT



01.

## 01. Rogue

Size: 65", 66", 67"

- "Pro Design" • Hybrid Concave • "5-Stage Rocker" • 100% Carbon Layup • PVC Machined "Core"
- "Sure lock" adjustable fin system • Level: Advanced to Professional • The Rogue features the Hybrid Concave design which transitions into a full edge to edge concave • This design helps the ski generate a smooth consistent edge change, whilst being able to maintain incredible angle through the wakes
- The lightweight PVC "core" and carbon graphite construction gives this ski incredible acceleration and speed, allowing the athlete to be wide and early for the next turn buoy • The contoured deck incorporates many high performance characteristics into the ski and allows variable flex patterns through the ski • The incredible angle through the wakes will allow you to be wide and early for the next buoy, giving you all the time in the world to turn your "offside" into your "on-side"

260812001

Size chart & specifications on page 144-145

SKIER: NANCY CHARDIN



01.



# SLALOM SKIS



02.



03.



04.

#### 01. Encore

Size: 65", 67", 68"

- "Technique Design" • "Edge" to "Edge" Concave • "3-Stage Rocker" • 100% Carbon Layup • Polyurethane "Core" • "Sure lock" adjustable fin system • Level: Intermediate to Professional • The Encore is a lightweight full Carbon layup ski with new bevel designs for stability and directional feedback for the skier • The bevel was designed to hold the ski in position so that intense angle can be generated • The Encore is a full concave ski with two "flat spots", making it faster on the water • "Flat spots" are flat areas of the ski under the bindings • One "flat spot" is for stability in return phase and the other allows the ski to hook up faster out of the turn • The fore body design is to help the skier make a sharper, more efficient turn which requires less input from the skier • "Tail rocker" ("pivot to flat") allows the ski to complete the turn faster and more efficiently than ever before • An adjustable tournament fin comes assembled on the ski

260012006

#### 02. Defiant

Size: 65", 67", 68"

- "Technique Design" • "Edge" to "Edge" Concave • "3-Stage Rocker" • Carbon Fiberglass Composite Layup • Polyurethane "Core" • "Sure lock" adjustable fin system • Level: Carving to Enthusiast • The Defiant is a slalom ski with a turning and stability rating second to none in its class • The full concave bottom design rolls into a specially tested and designed bevel, which gives the skier a rock solid feel both on edge and during the turn • With a stable "flat spot" to allow the least amount of body movement, the skier will edge as much or as little as desired • The Defiant uses a hybrid carbon/fiberglass lay-up with a polyurethane "core" that enables this to be a consistent ski to ride time and again, with a "flex pattern" within the tightest tolerances • An adjustable tournament fin comes assembled on the ski

260810002

#### 03. Baron

Size: 65", 67", 69"

- Designed to enjoy • "Edge" to "Edge" Concave • "3-Stage Rocker" • Fiberglass Layup • Polyurethane "Core" • "True Set" fin system • Level: Carving to Slalom • The Baron will reintroduce performance and enjoyment to skiers of all levels • Based on a more traditional ski shape, the Baron has performance and support built in • With the fiberglass layup, and a slightly narrower tail, the back of the ski is able to sit deeper in the water, allowing the skier to initiate easier turns • Latest design bevels and rocker line have been added, giving this ski great "edge holding" ability through the wakes • These features all add up to help suit a broad range of styles and varying levels of skier • The combination of design and performance gives the skier a large "sweet spot" creating a very stable ride

260012002

#### 04. Flora Ladies

Size: 65", 67"

- "Edge" to "Edge" Concave Design • Radius Side Cut • "Hybrid Rocker" • Fiberglass Layup • Polyurethane "Core" • "True Set" fin system • Level: Carving to Slalom • The Flora all the newest design characteristics with added surface area; it is loaded with performance and stability • Softer "flex pattern" for the female skier, the ski designed to provide enjoyment and performance to the water ski enthusiast • This ski takes you from a novice to the slalom course, the slightly wider profile allows the skier to carry more speed in the turns whilst still having the edge design of the higher end skis • This ski is highly popular with those in the entry level of the slalom course or those simply wanting to carve up the water

260011005

Size chart & specifications on page 144-145



01.

02.

03.

04.

05.

#### 01. Hammer

Size: 68,5"

• V Bottom Concave Design • "Continuous Rocker" • Fiberglass Layup • Polyurethane "Core" • "True Set" fin system • Level: Carving to Free ride • The Hammer was developed to be used as an all-round cruiser and is great to enjoy a day on the lake or to start on counting the buoys in the slalom course • This ski will bring back the fun to your ride, it makes getting out of the water easy due to its larger surface area, blended v-bottom concave, and comfortable "sweet spot" • The increased surface area makes effortless wake crossings and allow you to ski at various boat speeds whilst greatly increasing the skis stability • Whether you are out doing some serious carving or just having some fun, the Hammer is sure to deliver a smooth, fun ride in all water conditions  
260011002

#### 02. Traditional Slalom Ski

Size: 67"

This ski is designed to delivering greater acceleration along with a more controlled ability to get wider earlier due to its larger sweet spot • Allows the skier to exert less strength and makes it one of our most controlled, smooth, and patient skis in the line • Developed to make skiing fun with less effort, it is well suited to skiers of all levels • Comes with a standard fin  
260011004

#### 03. Assault Junior

Size: 63,5"

• "Pro Design" • Hybrid Concave • "5-Stage Rocker" • Fiberglass Layup • Polyurethane "Core" • "True Set" fin system • Level: Curious to Enthusiast • This new ski to our range is designed after our latest design, the Rogue • It utilizes the Hybrid Concave design and transitioning into a full "edge" to "edge" concave • We have made a special layup allowing a softer flex producing a very forgiving ski that can still generate a smooth turn and great edge control, whilst being able to generate good speed across the wakes • Introducing these latest design features into a Junior ski will add to the performance and learning curve of the budding skier • With these features and design we believe it is the best Junior ski in this category and will take the avid skier to a new level  
260011003

#### 04. Progress Slalom

Progress Slalom 67" + Focus Adjustable + RTS

Size Focus Adjustable: Standard

• Forged aluminum fin • Including the Focus Adjustable binding and RTS • Performance level: beginner to recreational/sport • Gloss UV-coated finish  
Progress + Focus Adjustable + RTS: 260010001

#### 05. Hemi Slalom

Hemi Slalom 65" + Focus Adjustable + RTS

Size Focus Adjustable: Standard

• Forged aluminum fin • Includes the Focus Adjustable binding and RTS • Large "sweet spot" • Shaped slalom ski with wider "tip" to help with deep water starts and to improve stability • Performance level: beginner to recreational/sport • Great ski to learn slalom skiing • Gloss UV-coated finish

Hemi Slalom + Focus Adjustable + RTS: 260010002

*Size chart & specifications on page 144-145*



06.  
+ Limit Bindings

06.  
+ Focus Bindings



**06. The Standard**

Size: 144, 153

Size Limit Bindings: XS, S, M, L, XL, XXL

Size Focus Bindings: Standard, XL

- Designed for "rail slides", jumps, switch rides and excessive tricks
- Comes with Focus or Limit bindings
- "3-stage rocker"
- Light PU foam "core" wrapped in fiberglass
- Four 0.9" nylon/fiberglass fins

The Standard 144 + Limit: 208810009

The Standard 153 + Limit: 208810010

The Standard 144 + Focus: 208810007

The Standard 153 + Focus: 208810008

*Size chart & specifications on page 144-145*



## Slalom Binding Specs



### Aluminum plate

Lightweight and flat aluminum base plate which makes your feet come even closer to the ski, giving you more control and feeling during a set. The aluminum plate applied on the Rogue binding is unique and has an extra mounting position for the binding which creates the opportunity to mount the rear binding closer to the front binding



### Nylon plate

Strong and reliable base plate with indestructible side bars with which the overlay is mounted to the plate. The integrated molded ergonomic foam footbed is soft and comfortable



### Inner liner

Custom formed to fit the contours of your foot for the maximum in comfort, fit and finish. Three levels and blends of foam covering help the "liner" conform to your foot like it is one with it. The Rogue, Comfort and Capri each have a uniquely composed "inner liner"



### Articulated heel/ankle assembly

Makes the upper part of the bindings move along easier with your lower legs but still gives all the necessary support you need



### Dual lacing

System with a bungee cord in the upper ankle section and a tough lace on the lower foot section. Tighten and loosen the laces at upper ankle section and lower foot section independently



### Easy attach lace holder

Attach the laces to the binding fast and easy with a press stud system to prevent them from getting in the way during the ride



### Achilles kidneys

Locks your Achilles in place and helps keep your ankle positioned properly in the back of the boot to ensure proper foot placement and support



### Stretch Panel

The flexible panel on the heels allow for all the necessary extra movements you need during a ride once you're wrapped into a rigid binding



### Webbing lace pull loop

Allows you to clinch down the laces to be completely locked in



### Dual Density Footbed

Soft ergonomic shaped footbed which gives you all the comfort you need



### Adjustability

For a large range of various foot sizes

Size chart on page 144-145



01.





02.



03.



03.



04.

05.  
Aluminum

05.  
Nylon

06.

### 01. Rogue Front & Rear

Size Men: 8/8.5, 9, 10 Left and Right Specific



- The Rogue was designed to provide the ultimate in stability, rigid comfort, and smooth control that a high end skier desires • Unmatched fit, comfort and enhanced heel hold due to our uniquely shaped foot lasts • Our "liners" have increased support laterally where you need it most while still providing a solid foundation for the heel and ankle thru carefully located articulation. This allows for more precise cuts into the set and more comfort when backing off as well • The Rogue is sure to give you all the performance you need without sacrificing the comfort you want • Lower Heel Design allows the skier to back support off without affecting the "tip" of the ski (for context see Focus Adjustable) • Bungee cord in the upper ankle section for emergency exit • Aluminum plate with two binding mounting positions

Front Left: 330812001 - Front Right: 330812004  
Rear Left: 330812005 - Rear Right: 330812006

### 02. Limit Front & Rear Black

Size: XS, S, M, L, XL, XXL



- The classic Limit ski bindings offer instant ski response and superior "edge control" with their solid lateral support and structured feel • Enhanced heel and insteps support to enhance "edge hold" and angle • Rear lace interlocking design which can be easily adjusted to ensure proper forward and lateral support • This support allows the skier to obtain the proper leverage required when making those critical cuts across the wake • Bindings for intermediate to advanced skiers

Front: 330810003 - Rear: 330810004

### 03. Comfort / Capri Comfort Ladies

Size Men: 5/8, 8/11, 11/14 - Size Ladies: 5/8, 8/11



- The Comfort is a performance built, comfort managed, ultra supportive boot to make skiing enjoyable for everyone • With our one piece chassis design for stability and support where you need it and matched to an improved formed open toe "inner liner", comfort and function blend perfectly to make skiing on the water all the fun it can be • Easy entry and a snug relaxed fit make the Comfort a binding that riders of all levels can enjoy and depend on • Bungee cord in the upper ankle section for emergency exit • The Ladies Capri binding has a modified and thicker inner liner specially designed for ladies feet

Comfort: 330812003 - Capri: Code 331411001

### 04. Focus Adjustable

Size: Standard, XL



- The overlay is designed to offer the flexibility needed when backing off on the water and the support needed to push through the course or just carve the lake up • Perfect for recreational to intermediate skiers looking for a supportive boot that is also comfortable and very easy to get into

330812002

### 05. RTP Pivot/Comfort RTP Pivot

Size: Mini, Standard, XL

- The pivoting Rear Toe Plate provides leverage and increased edge control • Beginner to pro • Customizable strap for a superior fit • Molded ergonomic and soft foam footbed

Comfort RTP Pivot with aluminum plate (Rogue/Comfort/Capri): 330011002  
RTP Pivot with nylon plate (Limit/Focus): 330809002

### 06. Adjustable RTP Pivot

Size: Universal

- The pivoting Adjustable Rear Toe Plate provides leverage and increased edge control • Beginner to pro • Customizable strap for a superior fit • Molded ergonomic and soft foam footbed • The ARTP has a Velcro strap which makes customizing even easier.

ARTP Pivot with nylon plate (Limit/Focus version): 330801015

# ROPES & HANDLES

## 01. Pro Wakeboard Handle Austin

Specs: 15" grip with 5 ft Spectra rope  
 A soft EVA foam handle with a nice and sticky leather layer around it • Slick and lightweight nylon molded end caps • Grip diameter: ø 28 mm • 5 ft Spectra rope covered with slim PVC piping • Extremely light  
 210012003

## 02. Frontier Diamond Wakeboard Handle

Specs: 15" grip with 5 ft PE-coated Spectra rope  
 • Leather grip nicely finished with diamond stitching • Grip diameter: ø 30 mm  
 • 4 mm EVA foam smooth layer underneath the leather layer • Spectra rope covered with slim PVC piping • Extremely light  
 210111001

## 03. Frontier Pearl Wakeboard Handle

Specs: 15" grip with 5 ft PE-coated Spectra rope  
 • Leather grip with "TPU pearl drops" • Grip diameter: ø 28.5 mm • 4 mm EVA foam smooth layer underneath the leather layer • Spectra rope covered with slim PVC piping • Extremely light  
 210111002

## 04. The Lockdown Wakeboard Handle

Specs: 15" tractor grip with 5 ft Spectra rope  
 • Pro handle with 5 mm die-cut EVA foam Smooth grip • Grip diameter: ø 28.5 mm • 9" pencil floats • 5 ft strong Spectra rope with slim PVC piping  
 210811001

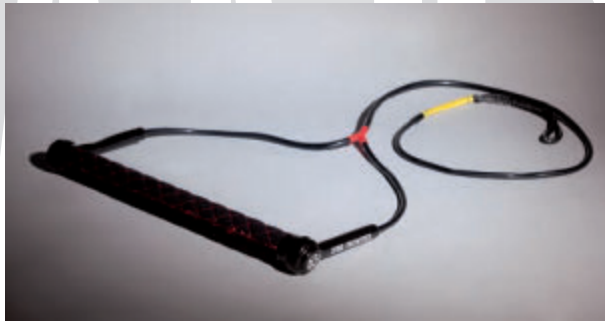
## 05. The Stick Wakeboard Handle

Specs: 15" grip with 5 ft Spectra rope  
 • Pro handle with 3 mm die-cut EVA foam Smooth grip • Grip diameter: ø 27.5 mm • 9" pencil floats • 5 ft strong Spectra rope with slim PVC piping  
 211011001

01.



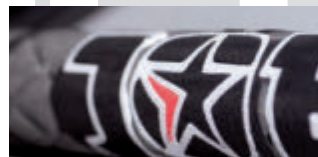
02.



03.



04.



05.







06.



07.



08.



09.



10.



11.



12.



13.

**06. Jersey Wake Combo**

Specs: 15" grip + 4 section 65 ft Mainline  
 • 4 mm EVA foam with horizontal grooves • rope with minimum to no stretch • Ideal for all levels of wakeboarding • 9" pencil floats  
 • Grip diameter: ø 27 mm • Striped EVA foam V-grip handle which helps performing wrapped tricks • 1 x 50 ft (1524 cm) section • 3 x 5 ft (152 cm) sections  
 210011001

**07. Wake Combo Ultegra**

Specs: 15" diamond grip with 4 section 70 ft mainline  
 • Lightweight pro handle with super soft 5 mm EVA foam grip  
 • Grip diameter: ø 27 mm • 9" floats • Spectra core with PE-coated mainline, absolutely No stretch • 1 x 55 ft (1676 cm) section • 3 x 5 ft (152 cm) sections  
 210008004

**08. Wake Combo Max**

Specs: 15" diamond grip + 6" V-grip with 4 section 65 ft mainline  
 • 5 mm EVA foam diamond grip • Rope with minimum to no stretch • Grip diameter: ø 27 mm • Ideal for all levels of wakeboarding • 9" floats • EVA foam diamond V-grip handle which helps performing wrapped tricks • 1 x 50 ft (1524 cm) section • 3 x 5 ft (152 cm) sections  
 210008003

**09. Wake 2 Wake Combo Advanced**

• 15" grip with 3 section 60 ft mainline • EVA foam twisting die cut • Rope with little to no stretch • Grip ø 27 mm • 9" pencil floats • 60 ft Mainline 1x45 ft (1372 cm) 3x5 ft (152 cm) section  
 210011002

**10. Wake Starter**

Specs: 15" handle incl. 5 ft line, 70 ft mainline  
 • 16 strand wakeboard rope with smooth rubber handle • Grip diameter: ø 26.5 mm • Thick 9" floats  
 210005002

**11. Flat Spectra Rope**

Specs: 5 section, 80 ft mainline  
 This strong and flat spectra line(2mm) will set the new high quality standard for wakeboard lines! The innovated woven technic that is used is super strong (break strength 22KN = 2.243 KG / 4.945 LBS), flexible and has absolutely no stretch. It's soft to handle, and it looks great! A must for every rider!  
 • Flat line; strong, slender woven spectra • 40 strands • no stretch • 4 x 5ft section • 1 x 60ft section  
 210111003

**12. PE-Coated Spectra**

Specs: 4 section, 75 ft mainline  
 • Floating and non-stretch Spectra rope • Stiff and tangle free  
 • 3 x 5 ft (152 cm) sections • Spectra core with PE coating  
 210505001

**13. Spectra Rope**

Specs: 4 section, 70 ft mainline  
 • 100% 4 mm Spectra, absolutely no stretch • 3 x 5 ft (152 cm) sections • Poly-coated to resist knotting and abrasion  
 210111004

01.



### 01. Rogue Pro Handle Blue ø 27,4mm

Specs: 13" with tacky rubber grip  
 • New this year a lightweight handle for professional skiers • This year we have adjusted the thickness to ø 27,4 mm - 1.078 inch for a better grip • Extra strong double-D 13" aluminum bar with durable and extra tacky rubber grip for better performance  
 210512001

02.



### 02. Rogue Pro Handle Green ø 26mm

Specs: 13" smooth rubber grip  
 • Lightweight handle • Grip ø 26 mm, perfect for ladies and juniors • Extra strong double D aluminum bar  
 210811002

### 03. Sport Series

Specs: 12" smooth grip with 2/5/8 section 75 ft mainline  
 • Tacky team handle with strong aluminum core • Grip diameter: ø 27 mm • Sectioned for perfect shortening  
 • Competition shortenings; rope shortening according to the official competition standard  
 2 sec.: 210001054  
 5 sec.: 210808003  
 8 sec.: 210001052

### 04. B2 Spectra Series

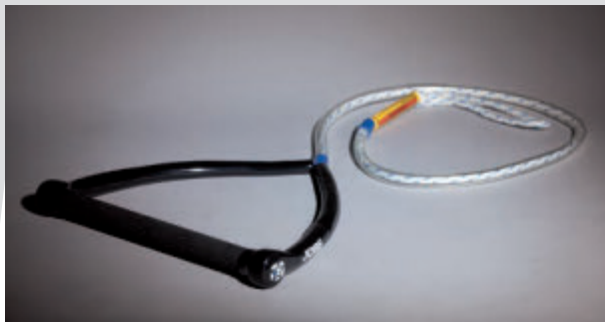
Specs: 12" Smooth grip ø 24 mm, Straight  
 13" smooth grip ø 26 mm, Straight  
 13" smooth grip, Elliptical Straight  
 13" smooth grip ø 26 mm, Radius  
 • Unique handles with superior grip • Rope protection grommet inside handle for less rope wear • For all levels of skiing • Radius handle provides enduring runs  
 12" smooth grip 24 mm: 210008013  
 13" smooth grip 26 mm: 210008014  
 13" smooth grip Elliptical: 210008012  
 13" smooth grip Radius: 210008015

### 05. Easy Up Deep V Deluxe + Mainline

Specs: 15" diamond grip with 2 section 70 ft mainline  
 Specs: 12" diamond grip with 2 section 70 ft mainline  
 • Soft molded 4 mm EVA foam with aluminum core  
 • Grip diameter: ø 27 mm  
 • 16 strand deep V line for easier slalom starts • Finger protection on handle for safety • 15": 2 floats, 12": 1 float • 1 x 55 ft (1676 cm) section • 1 x 15 ft (457 cm) section  
 15": 210008007 - 12": 210009005



04.



04.

05.



05.

**06. Kick Off Rope**

Specs: 11" handle incl. 5 ft line, 60 ft mainline  
• Recreational rope • 8 strand ski rope with EVA foam grip • Grip diameter: ø 29 mm  
210006001



06.



07.

**07. Transfer Rope**

Specs: 11" handle incl. 5 ft line, 60 ft mainline • 12 strand ski rope with EVA foam grip • Grip diameter: ø 29 mm  
210006002

**08. Kneeboard Combo**

Specs: 13" smooth grip + extra 6" grip, 3 section 65 ft mainline  
• Small grip locks behind handle hook for a easy start  
• Grip diameter: ø 27.5 mm • Ideal for all levels of kneeboarding • 2 x 5 ft (152 cm) sections • 1 x 55 ft (1676 cm) section • PE rope  
210008011



08.



09.

**09. Wake/Slalom Handle**

Specs: 15" handle with smooth grip  
• For all levels of bare footing, wakeboarding and skiing • Grip diameter: ø 27 mm  
210000035

**10. Front Toe Handle**

Specs: 14" handle with smooth grip  
• High quality front toe handle • Grip diameter: ø 27 mm • Aluminum core • Strong and lightweight  
210000036



10.



11.

**11. Back Toe Handle**

Specs: 16" handle with smooth grip  
• High quality back toe handle • Grip diameter: ø 27 mm • Aluminum core • Strong and lightweight  
• 16 strand TEK line  
210107001

**12. 360 Trick Bridle**

Size: S, M, L  
• The classic trick handle • Grip diameter: ø 27 mm  
• Contoured leather strap for added comfort • Gives the skier a comfortable hold on toe tricks  
210000037



12.



13.

**13. International Mainline**

International 70 ft 8 section/10 section - Official rope of International Pro Tours  
Construction: 16 strand, 64 filament, 3/8 heavy-duty polypropylene • The best tournament ropes available  
• Lowest elongation, highest break strength  
• Detachable sections  
8 sec.: 210000019  
10 sec.: 210000020



01.

**01. Cable Bridle**

Specs: 8 ft/244 cm  
• Rope break strength: 1170 lbs/530 kg • Floating pulley to keep rope away from the propeller and a smoother ride.  
Stainless steel hooks: 210101070



02.

**02. Rope Bridle**

Specs: 8 ft/244 cm  
• Length of the rope can easily be adjusted • Break strength: 1300 lbs/590 kg • Floating pulley to keep rope away from the propeller and offer a smoother ride.  
Stainless steel hooks: 210101069



03.

**03. Magnum Bridle**

Specs: 4 ft/122 cm  
• Ideal for water sleds and multi-person towables • Ultra strong karabiner style clips • Rope break strength: 3725 lbs/1690 kg  
• Float to keep rope away from the propeller.  
410102005



04.

**04. Water Sports Bridle with Pulley**

Specs: 4 ft/122 cm  
• Ultra strong karabiner style clips • The pulley reduces stress of the boat's (D-) rings • Rope break strength: 2200 lbs/1000 kg  
• Float to keep rope away from the propeller.  
210209002



05.

**06. Line Winder**

Easily wind up your rope for storage and prevent your rope from tangling up  
210205001



06.

**07. Spooled Rope**

Specs: 1000 ft/305m  
• Perfect rope for ski/stunt teams, cable ski centers, etc. • Rope break strength: 1155 lbs/525 kg  
210000010



07.

**08. Shock Tube**

Specs: 4 ft/122 cm  
• Absorbs rope shock • Offers more boat safety  
210000022



08.

**09. Webbing Bungee Dock Tie**

Specs: 6 ft/183 cm  
• Nylon webbing with internal bungee cord for shock absorption  
• Stainless steel clasp for easy hook-up • Loop on both ends  
210808002



09.

# GLOVES GLOVES





01.



02.



03.



04.



05.



06.



07.



08.



09.



07.



08.



09.



07.



08.



09.

### 01. Grippa Gloves

Size: XS, S, M, L, XL, XXL

- Pre-curved fingers with padded fingertips for better grip and comfort
- Constructed of nonslip Amara material
- Padded panels and nonslip silicon-printed palm for extra grip
- Soft and strong Amara fabric

340110002

### 02. Suction Gloves

Size: XS, S, M, L, XL, XXL

- Short model for more freedom of movement
- Anti slip silicon-printed hand palm
- Padded panels on the palm of the hand
- PVC knuckle and finger guards
- Segmented finger design
- Soft and strong Amara fabric in the palm of the hand

340810004

### 03. Swatthe Gloves

Size: XS, S, M, L, XL, XXL

- Short model for more freedom of movement
- Padded panels and nonslip silicon print on palm for extra grip
- Segmented finger design
- Soft and strong Amara fabric in palm of hand

340810003

### 04. Pro Gloves Silicone

Size: XS, S, M, L, XL, XXL

- Nonslip silicon-printed palm for extra grip
- Soft and strong Amara fabric in palm of hand

340410001

### 05. Kevar Adventure Gloves

Size: XS, S, M, L, XL, XXL

- Kevar grip palms for ultimate control
- 3/4 finger style

340510001

### 06. Flair Gloves

Size: XS, S, M, L, XL

- Slim fit for ladies
- 3/4 finger style
- Nonslip silicon-printed palm for extra grip
- Soft and strong Amara fabric in palm of hand

340110001

### 07. Stream Gloves

Size: S, M, L, XL, XXL

- Soft and strong suede fabric in the palm of the hand
- Foam knuckle protection on top of the glove
- 1 1/4 inch webbing strap with Velcro closing

340811001

### 08. Neoprene Gloves

Size: S, M, L, XL, XXL

- 2.5 mm neoprene glove for extra warmth
- Glued and blind stitched seams
- Nonslip silicon-printed hand palm

340810001

### 09. Palm Protectors

Size: Universal

- Extra neoprene layer to wear underneath your gloves to protect your hands from callosity

340807002



# PROTECTIVE GEAR



REAR ADJUSTER  
01.



REAR ADJUSTER  
02.



REAR ADJUSTER  
03.



REAR ADJUSTER  
04.

## 01. Pro Helmet Austin

Size: XS, S, M, L, XL

• "classic skate" style shape" CE approved helmet • Small size shell for size XS, S & M, larger size shell for L • Rear Adjuster • Adjustable chin strap • Duraflex© side divider • EVA foam lining with soft lycra edge cover • Includes fit pads to create a perfect fit • Glossy finish with Austin's pro art work • Including decal sheet for customizing your helmet. 370012005

## 02. Pro Helmet Click

Size: XS, S, M, L, XL

• "classic skate" style shape" CE approved helmet • Small size shell for size XS, S & M, larger size shell for L & XL • Rear Adjuster • Adjustable chin strap • Duraflex© side divider • EVA foam lining with soft lycra edge cover • Includes fit pads to create a perfect fit • Black paint, rubber finish with CK's pro art work • Including decal sheet for customizing your helmet. 370012004

## 03. Achelos Helmet

Color: Gloss White, Matt Black - Size Black: XS, S, M, L, XL Size White: S, M, L, XL

• CE approved helmet with detachable earpads • Small size shell for size XS, S & M, larger size shell for L & XL • Rear Adjuster • Adjustable chin strap • Duraflex© side divider • Artwork (waterdecal, full color) • EVA foam lining • Includes fit pads to create a perfect fit White Gloss: 370012003 - Matt Black: 370012002

## 04. Patrol Helmet

Size: XS, S, M, L, XL

• CE approved helmet with detachable earpads • Small size shell for size XS, S & M, larger size shell for L • Rear Adjuster • Adjustable chin strap • Duraflex© side divider • Artwork (waterdecal, full color) • EVA foam lining • Includes fit pads to create a perfect fit • With subtle art work 371412001



05.



07.



06.



08.

#### 05. Logo Series Helmet

Size: S, M, L, XL

- CE approved helmet • Soft inner lining for comfort • Removable ear protection • Especially made for watersports • Comfortable fit
- Fast drying • Easy adjustable chin straps

370111001

#### 06. Hustler Helmet

Size: S, M, L, XL

- CE approved helmet • Soft inner lining for comfort • Removable ear protection with plastic press studs • Especially made for watersports • Comfortable fit • Fast drying • Easy adjustable chin straps • Metallic or rubber looks

370809001

#### 07. Stripes Helmet

Color: Black Rubber - Size: S/M, L/XL

- CE approved helmet • A must have for the dedicated rider • Includes 4 fit pads and 2 shark shaped EVA foam pads. These detachable fit-pads give you a super comfortable custom fit without absorbing moisture • Popular baseball cap shape • 3 point adjustable strap system attached to the shell with metal press studs • Fast drying • Removable ear protection • Easily adjustable chin straps

370811002

#### 08. X Helmet

Colour: Green Gloss - Size: S/M, L/XL

- A must have for the dedicated rider • CE approved helmet • Includes 4 fit pads and 2 shark shaped EVA foam pads. These detachable fit-pads give you a super comfortable custom fit without absorbing moisture • Popular baseball cap shape • 3 point adjustable strap system attached to the shell with metal press studs • Fast drying • Removable ear protection • Easy adjustable chin straps

371111001

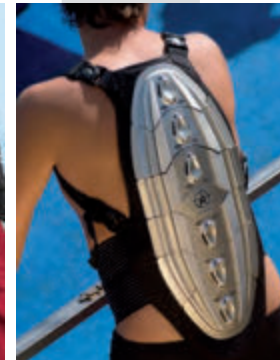
09.



10.



11.



12.

#### 09. Kneebrace with Flexible Reinforcement

Size: M, L, XL

- Unique wrap around knee brace with extra support by hinge straps on the side • With strong Velcro support • Prevents injuries and supports limbs

300810014

#### 10. Spray Leg

Size: S, M, L, XL

- Neoprene calf and lower leg protection • Protects your shin from forceful spray of the ski

300802052

#### 11. Back Support

Size: Universal

- Fully adjustable torso back support • Helps to prevent back injuries and supports back

300801013

#### 12. Shield Back Protector

Size: S/M, L/XL

- CE-approved • Protect your spine with this great new item • Must have for all fanatic PWC riders • It can also be used by wakeboarders, snowboarders, BMX riders and motor crossers

370807001

Size chart on page 144-145



01.

### 01. Wake Trailer Bag

Size: 61" x 16" x 8" / 154 x 41 x 20 cm

- Fully padded heavy duty polyester bag
- Reinforced webbing handles
- Has wheels and bag-pull power straps
- All terrain wheels for stability and sandy surfaces
- Hidden backpack straps
- Inner pockets for towels, wetsuit or vest
- Board security straps to enable safe transportation
- Water drains
- Fits wakeboards and wakeskates

220810004

### 02. Padded Wakeboard Bag

Size: Fits all Jobe wakeboards

- Fully padded heavy duty polyester bag
- Added space on the top side to store your wakeboard incl. bindings
- Extra long zipper for easy access
- Hidden padded backpack straps
- Extra compartments for additional gear
- Water drains

220810003



02.



### 03. Padded Wakeskate Bag

Size: 43" / 109 cm

- Fully padded heavy duty polyester bag
- Extra long zipper for easy access
- Hidden padded backpack straps
- Extra large shoe compartment

220810001

### 04. Padded Kneeboard Bag

Size: Fits all Jobe kneeboards

- Fully padded heavy duty polyester bag
- Extra Long zipper for easy access
- Hidden padded backpack straps
- Additional compartment for extra gear
- Water drains

220810002



03.



04.



### 05. Basic Wakeboard Bag

Size: 56" / 142 cm

- Heavy duty polyester bag
- Extra long zipper for easy access
- Water drains

220810012

### 06. Neoprene Wakeboard Bag

Size Junior: 120-131 cm

- Neoprene protection with tie down straps
- Removable shoulder strap

220806001



05.



06.

### 07. Padded Slalom Bag

Size: 67" / 170, 69" / 175 cm

- Heavy duty polyester bag, padded throughout the entire bottom
- Enlarged binding compartment for front and rear binding and extra storage
- Slightly enlarged dimensions to get the skis in and out of the bag a lot easier
- Single backpack strap for more carry comfort
- Water drains
- Tail to mid zipper

220810007

### 08. Padded Shaped Slalom Bag

Size: up to 69" / 175 cm

- Heavy duty polyester bag, padded throughout the entire bottom
- Enlarged binding compartment for front and rear binding and extra storage
- Slightly enlarged dimensions to get the slalom in and out of the bag easier
- Single backpack strap for more carry comfort
- Water drains
- Tail to mid zipper

220810008





09.



10.



11.



12.

### 09. Shaped Combo Bag

Size: 65"/165 cm  
• Heavy duty polyester bag • Slightly enlarged dimensions to get the skis in and out of the bag a lot easier • Water drains  
• Removable shoulder strap  
220810009

### 10. Combo Bag

Size: 67"/170 cm  
• Heavy duty polyester bag • Slightly enlarged dimensions to get the skis in and out of the bag a lot easier • Water drains  
• Removable shoulder strap  
220810010

### 11. Backpack

• Heavy duty polyester backpack • 3 main storage compartments  
• 3 extra pockets • Laptop compartment • Sunglass pocket  
• MP3 or phone pocket • Padded shoulder straps • Soft back panel with air ventilation • Skateboard straps • Mesh side pockets  
220810006

### 12. Sports Bag

Size: 26"x14"x10" 65x35x25 cm  
• Large and comfortable polyester sports/travel bag • 9 handy compartments on the in and outside of the bag to store extra gear  
• 4 handles and a removable shoulder strap  
220810005

# BAGS BAGS BAGS



# BOAT ACCESSORIES

## 01. Addict Tower 1.5

The Addict 1.5 tower with 2 inch diameter aviation grade aluminum tubes and aggressive tribal shaped side-arms! If you like to show off, this is the perfect tower for you! Both tribal arms have a unique square shaped wakeboard rack integrated • This model has improved mounting blocks (connection with the boat), for a stronger and more durable connection • This tower fits on any boat from 76 - 108 inches in width, and can also be folded down above the horizontal side bars • Telescopic top section • 2" diameter tubing • Fits boat decks from (at least) 76"/193 cm to 108"/274 cm in width • Anodized version: aluminum tubes are anodized to increase corrosion resistance and surface hardness  
Polished: 400709006 - Anodized: 400709019

## 02. Addict Quick-Release Mirror Clamp

• Makes the Jobe Quick-Release Mirror Arm compatible with different diameter tubes • Anodized version: aluminum parts are anodized to increase corrosion resistance and surface hardness  
Anodized: 2.25"-2.5": 400709023  
Anodized: 1.875"-2.0": 400709012

## 03. Addict Quick-Release Mirror Arm w. Mirror

• Easy to mount on your Jobe tower • Super easy connect/disconnect system • Fits all towers with 1.875"-2" tubes • Comes with a 185 mm x 370 mm safety mirror • Anodized version: aluminum parts are anodized to increase corrosion resistance and surface hardness  
Anodized: 400710003

## 04. Addict Pivoting Swivel Board Rack

• Super easy access to your boards • Boards swing towards you in a 90 degree angle from the tower • Fits Ø 1.875"-2" tubing • Can be mounted at any desired angle • Bungee securely holds 2 boards • Rubber layer in between the forks protects your board or wakeskate  
Anodized: 400010001



01.  
Polished - Anodized

02.



03.  
Anodized



04.  
Anodized



05.  
Polished - Anodized



06.  
Polished - Anodized



07.  
Polished



09.

#### 05. Addict Tower 1.3

The Addict 1.3 is the best looking tower on the market; manufactured out of the best aviation grade aluminum available. The 2 inch tubes look great and will definitely make heads turn!! The horizontal bars run parallel to most window-lines, making the tower more rigid and stable. This tower fits on boats from 76-108 inch wide. This tower is higher than other towers which will give you that extra airtime and more space to walk around on the boat

- 2" diameter tubing
- This model has improved mounting blocks (connection with the boat), for a stronger and more durable connection
- Fits boat decks from (at least) 76"/193 cm to 108"/274 cm in width
- Anodized version: aluminum tubes are anodized to increase corrosion resistance and surface hardness
- Can be folded down for winter storage

Polished: 400708004 - Anodized: 400709009

#### 06. Addict Quick-Release Swivel Board Rack

Addict Quick-Release Swivel Board Rack Anodized

- Fits  $\varnothing$  1.875"-2" tubing
- Super easy connect / disconnect system
- Can be mounted in any desired angle
- Bungee securely holds 2 boards
- Rubber layer in between the forks protects your board or wakeskate
- High polished aluminum finish
- Anodized version: aluminum parts are anodized to increase corrosion resistance and surface hardness

Polished: 400709008 - Anodized: 400709014

#### 07. Addict Light Bar

- Bullet shaped & great quality
- Comes with 5 chrome lights, includes wiring
- 2 lights face one direction, 3 lights face the other
- Wiring comes with protection sleeves and connection plugs
- High-polished aluminum finish
- Fits all Jobe Towers

Polished: 400711001

#### 08. Addict Light Bar Clamp

- Makes the Jobe Light Bar compatible with different diameter tubes
- Comes in a set of 2

Polished 2.5": 409909002 - Polished 2.0": 409909001

#### 09. Addict Rack Clamp

- Makes the Jobe Board Bar and Ski Racks compatible with different diameter tubes
- Fits Fixed and Quick-release Jobe Board and Waterski Racks!
- Anodized versions: Aluminum clamps are anodized to increase corrosion resistance and surface hardness

Polished: 2.25"-2.5": 400709016 - Polished: 1.875"-2.0": 400709015  
Anodized: 2.25"-2.5": 400709018 - Anodized: 1.875"-2.0": 400709017

### 01. Addict Tower 1.1

The Addict 1.1 is manufactured with 2 inch diameter aviation grade aluminum tubes and is easy to fold down completely. This model has improved mounting blocks (connection with the boat) for a stronger and more durable connection • This tower is very simple and easy to install, looks super stylish on any boat and is hard to match in price and performance • Telescopic top section • 2" diameter tubing • Fits boat decks from (a-t least) 76"/193 cm to 108"/274 cm in width.  
Polished: 400708002

### 02. Addict Swivel Board Rack

• Fits  $\varnothing$  1.875"-2" tubing • Can be mounted in any desired angle  
• Bungee securely holds 2 boards • Rubber layer in between the forks protects your board or wakeskate • High polished aluminum finish  
Polished: 400708008

### 03. Addict Curved Mirror Arm with Mirror

• Easy to mount on your Jobe tower • Fits all towers with 1.875"-2" tubes • Comes with a 185 mm x 370 mm safety mirror • Curved for increased view area  
Polished: 400710004

### 04. Addict Bullet Speakers

• Easy to mount on your Jobe tower • Rubber layer behind the speaker grills which prevents water from coming in to the shells  
• Internal wiring system • 6.5" Coaxial waterproof speakers  
• Mounting diameter:  $\varnothing$  155 mm • Technical specs: Nominal Impedance: 4  $\Omega$  +/- 15%, Dc Resistance: 3.6  $\Omega$ , Nominal Power Handling: 60, Max. Power Handling: 120W  
Polished: 400709001

### 05. Addict Bullet Speaker Clamp

• Makes the Jobe Bullet Speakers compatible with different diameter tubes • Comes in a set of 2  
Polished: 2.25"-2.5": 409909004  
Polished: 1.875-2.0": 409909003



01.  
Polished



02.  
Polished



03.  
Polished



04.  
Polished

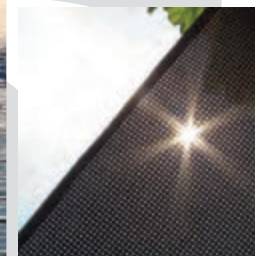
05.



**06.**  
Stainless Steel



**07.**  
Stainless Steel - Aluminum



**09.**  
Stainless Steel Perforated fabric



**10.**  
Polished



**11.**  
Polished

## 06. Addict Tower Bimini

Size: M, L

The Jobe Addict Bimini top with Sunbrella® fabric is a first-rate fabric that protects you and your family against ultra violet radiation, it is fungus and mildew repellent and is easy to clean. The Bimini is easy to install (you don't need to drill holes in your boat or tower), easy to use and quickly folds backwards for travelling and while not in use. The high quality frame is made out of polished stainless steel. The Bimini comes with a cover to protect the fabric while not in use • It will fit all Jobe towers and most other brands.

M: 137 cm wide top for boat decks from 80" to 94"/203 cm to 238 cm. L: 155 cm wide top for boat decks from 94" to 108"/238 cm to 275 cm

Stainless Steel: 400709011

## 07. Addict Tower Bimini Clamp

- Makes the Jobe Bimini compatible with different diameter tubes
- Comes in a set of 4

Polished: 2.5" 400710002 - Polished: 1.875 - 2.0" 400710001

## 08. Boat Bimini

Size: S, M, L

This comfortable Bimini is easy to install on your boat and provides maximum protection against sun rays ultra violet radiation. You don't need a wakeboard tower for installation; this Bimini will mount directly on the surface of the boat deck.

This Bimini is available in two versions: 1. Lightweight aluminum frame with protective UV coated nylon top. 2. High quality stainless steel frame with Sunbrella® top. (Sunbrella® is a first-rate fabric that protects against UV radiation, it is fungus and mildew repellent and easy to clean). Both versions are complete with support tubes and a boot to protect the fabric while not in use.

S: Width 67" to 72" (170.5 to 183 cm)

M: Width 73" to 78" (185 to 198 cm)

L: Width 79" to 84" (200 to 213.5 cm)

Stainless: 400811001 - Aluminum: 400811002

## 09. Boat Bimini With Perforated Fabric

Size: S, M, L

This Sunbrella® fabric gives protection against the sun but is perforated which allows to let some light and warmth through in a comfortable way. The Bimini comes with a cover to protect the fabric while not in use. This perforated Bimini is only available in the stainless steel version.

Stainless Steel Perforated fabric: 400812001

## 10. Addict Quick-Release Swivel Waterski Rack

- Fits Ø 1.875"-2" tubes
- Super easy connect/disconnect system
- Can be mounted at any desired angle
- Bungee securely holds a combo pair
- Rubber layer in between the forks protects your waterskis
- High-polished aluminum finish

Polished: 400707001

## 11. Addict Wakeboard/Kneeboard Rack

- This combo rack is made to store your kneeboard and wakeboard
- It is easy to mount on your tower
- Can be mounted in any desired angle
- Bungee ropes securely hold the boards
- Rubber layer in between the forks protects your wakeboard and kneeboard
- High polished aluminum finish.

Polished: 400712001



01.



02.



03.



04.



05.

#### 01. Adjustable Pro Ski Pylon

- Short ski tube • Easy to mount in all boats • Telescopic brace arms from 33" (83.5 cm) up to 57" (144 cm) • Main pylon adjusts from 34" (86 cm) up to 58" (147 cm) high • Stainless steel with Delron Swivel top • Quick and easy to disconnect 400705003

#### 02. The Pod

(2 pieces)

- The Pod is specifically designed to fit boats that are great for waterskiing and wakeboarding but just can't give riders the height they need • Quick and easy to install • Fits all inboard and outboard boats • Ski eye for low line activities • Self-supporting with two stainless steel arms and a 6.0" flush mount base plate • Secured by a 5,000 lb cable/ratchet strap assembly • Constructed with 84" (213.4) x 2.5" (6.4 cm) x 0.25" (0.64 cm) aircraft aluminum • This model breaks down into two pieces for easy storage 400804002

#### 03. Fat Pole

(2 pieces)

- Diameter 3.0" (7.6 cm) • Inside diameter 2 6/8" (6.56 cm) • Quick and easy to install • Available in a 2 piece model • The 2 piece model breaks down for easy storage • Adjustable from 72" (183 cm) to 85" (215 cm) • Sleeves for a tight fit while protecting your pylon • Ski eye for low line activities • Secured by a 5,000 lb cable/ratchet strap assembly • Constructed with aircraft aluminum 400004002

#### 04. Gunnel Mount Boom

- An easy way to learn how to barefoot/ski • Can be attached to virtually any boat: inboard, outboard or I/O • Any family boat turns into the ultimate barefoot/ski boat with this universal boom • Strong, safe and easy to mount 400703001

#### 05. Aggressor Boom

- Solid core for extra strength • Fits most tournament style ski boats • Uniquely designed clamp quickly adjusts and removes the boom without tools • Vinyl coated stainless steel cables • Specially grooved end section for easy rope handle attachment 400804005

### 06. Baby Block

Volume: 86 lbs/39kg  
Size: 11" (28 cm) x 14.5" (37 cm) x 14.5" (37 cm)  
• Small and easy to position in the boat • Inner bladder and protection cover • Easy to use counterweight  
401006001



06.

### 07. Launch Pad Twins

12V water pump included  
Volume: 2 x 350 lbs/159kg  
Size: 2 x Ø 15" /38 cm, L 50" /127 cm  
• UV resistant heavy-duty vinyl construction • Inner bladder and protection cover • Lock tight straps, easy fill application  
400800003



07.

### 08. Launch Pad

12V water pump included  
Volume: 500 lbs/227kg  
Size: Ø 20" /51 cm, L 50" /127 cm  
• UV resistant heavy-duty vinyl construction • Inner bladder and protection cover • Lock tight straps, easy fill application  
400800002



08.

### 10. Boat Mirror

Size: 2.1/2" (6.4 cm) x 8.0" (20.3 cm)  
• Fully adjustable • Convex mirror with quick-mount system • Universal to mount above or below the windshield, or on the dashboard  
420805004



10.

### 11. Safety Mirror

Size: 4.1/4" (10.8 cm) x 8.0" (20.3 cm)  
• Universal interior mirror • Mounts above or below the windshield • Fits frames from 5/8" (1.1 cm) to 1.0" (2.5 cm) thick • Fully adjustable with anti-scratch quick mount bracket  
420805003



11.

### 12. Suction Cup Mirror

Size: 4" (10.2 cm) x 8" (20.3 cm)  
• Fully adjustable mirror, stays in position • No holes to drill! No tools required! No scratching! • Attaches to any clean, non-porous surface - dashboard, console, or windshield mount.  
420709001



12.

### 13. Extreme Mirror

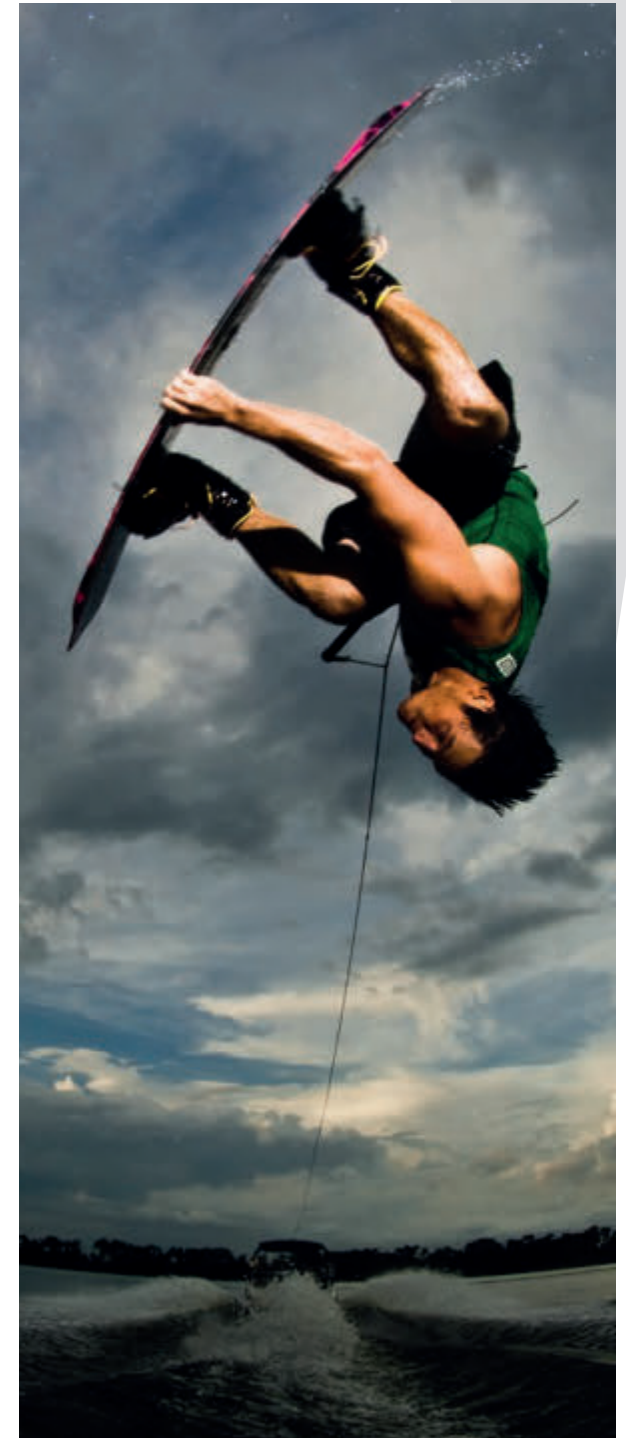
Size: 7.0" (17.8 cm) x 20" (50.8 cm)  
• Fits windshield frames from 3/8" (10 mm) to 1-1/4" (32 mm) • Multi-lens mirror with one stationary and two adjustable lenses • Ball & socket tension adjustment knob to keep the mirror where you position it • Bracket will mount to both rectangular and rounded windshield frames from 3/8" (10 mm) to 1-1/4" (32 mm) • Mounts above or below the windshield  
420806001



13.



09.





# TOWABLES





### 01. Binar

Deflated size: 81" x 78"/206 x 198 cm

- Full nylon cover • Heavy-duty PVC • Comfortable neoprene seat pads • 10 EVA foam filled webbing handles with neoprene knuckle guards • 4 air chambers
  - 2 extra strong towing points/can be towed in two directions • 4 water drains • Covered "Boston" valve • 3 speed valves • Rider capacity: 2 people
- 230212005

### 02. Lunar

Deflated size: 100" x 78"/254 x 198 cm

- Full nylon cover • Heavy-duty PVC • Comfortable neoprene seat pads • 14 EVA foam filled webbing handles with neoprene knuckle guards • 4 air chambers
  - 2 extra strong towing points/can be towed in two directions • 4 water drains • Covered "Boston" valve • 3 speed valves • Rider capacity: 3 people
- 230212006

### 03. Sonar

Deflated size: 120" x 78"/305 x 198 cm

- Full nylon cover • Heavy-duty PVC • Comfortable neoprene seat pads • 18 EVA foam filled webbing handles with neoprene knuckle guards • 4 air chambers
  - 2 extra strong towing points/can be towed in two directions • 4 water drains • Covered "Boston" valve • 3 speed valves • Rider capacity: 4 people
- 230212007



01.



02.



03.





**01. Apache**

Deflated size: 123" x 42"/312 x 107 cm

Have a wild and fun ride, or transform the Apache into a nice and relaxed canoe and go explore the area • Full nylon covered • Heavy-duty PVC • 6 EVA foam filled webbing handles with neoprene knuckle guards • 4 air chambers • 1 water drain • 3 back rests • Covered "Boston" valve • 3 covered speed valves • "Quick connector" • 2 detachable PVC molded fins • Including 2 detachable oars with comfortable T-Grip • Rider capacity: 3 people 230212004

# WATER



02.



## 02. KickFlip

Deflated size: 62" x 50"/158 x 129 cm

Just sit back and relax, while you have an easy ride. Or, when you turn the towable around and use the 2nd tow point, make sure that you have some tube experience to keep up with the Kick Flip! • Full nylon covered • Heavy-duty PVC • Comfortable neoprene pads • 8 EVA foam filled webbing handles with neoprene knuckle guards • 2 Air chambers • 4 water drains • Covered "Boston" valve • Stem valve • 2 "quick connectors"/can be towed in two directions • Rider capacity: 2 people  
230212011







01.



02.



03.

### 01. Sergeant

Deflated size: 67" x 51"/170 x 129 cm  
 • Full nylon cover • Heavy-duty PVC • 2 EVA foam filled webbing handles with neoprene knuckle guards • 3 air chambers including airfloor and backrest • Water drains • Neoprene covered "Boston" valve • 2 Stem valves • "Quick connector"  
 • Rider capacity: 1 person  
 230411004

### 02. Captain

Deflated size: 69" x 78"/175 x 198 cm  
 • Full nylon cover • Heavy-duty PVC • 4 EVA foam filled webbing handles with neoprene knuckle guards • 5 air chambers including 2 airfloors and 2 backrests • Water drains • Neoprene covered "Boston" valve • 4 Stem valves • "Quick connector"  
 • Rider capacity: 2 people  
 230211009

### 03. General

Deflated size: 69" x 104"/175 x 264 cm  
 • Full nylon cover • Heavy-duty PVC • 6 EVA foam filled webbing handles with neoprene knuckle guards • 7 air chambers including 3 airfloors and 3 backrests • Water drains • Covered "Boston" valve • 6 stem valves • Extra strong double tow point • Rider capacity: 3 people  
 230411005



01.

**01. Rumble**

Deflated size: 54"/137 cm  
 • Nylon cover • Heavy-duty PVC • 2 EVA foam filled webbing handles • 1 air chamber and 1 safety chamber • Water drain • Boston valve • Rider capacity: 1 person  
 230212013



02.

**02. Galaxy**

Deflated size: 54"/137 cm  
 • Nylon cover • Heavy-duty PVC • 4 EVA foam filled webbing handles with neoprene knuckle guards • 1 air chamber and 1 safety chamber • Water drain • Covered "Boston" valve • Rider capacity: 1 person  
 230509005

**03. Galaxy Package**

Included: Galaxy, Wrist Seal, Quick Release, Orange Flag, foot pump and rope for towables  
 238812001

**04. Crusher**

Deflated size: 56"/142 cm  
 • Nylon cover • Heavy-duty PVC • 4 EVA foam filled webbing handles with neoprene knuckle guards • Including Comfort cushion • 1 air chamber and 1 safety chamber • Water drain • Covered "Boston" valve • "Quick connector" • Rider capacity: 1 person  
 230210003



03.

**05. Hot Seat**

Deflated size: 58"/147 cm  
 • Full nylon cover • Heavy-duty PVC • 4 EVA foam filled webbing soft-grip handles with neoprene knuckle guards • 1 air chamber and 1 safety chamber • Water drain • covered "Boston" valve • "Quick connector" • Rider capacity: 1 person  
 230511005

**06. Giant**

Deflated size: 71"/181 cm  
 • Nylon cover/Heavy-duty PVC • 8 EVA foam filled webbing handles • 1 air chamber and 1 safety chamber • Water drain • Covered "Boston" valve • "Quick connector" • Rider capacity: 3 people  
 230409005



# ES W



04.



05.



06.





# WAVE TUBES

## 01. Airstream II

Deflated size: 66" x 44"/168 x 112 cm

- Full nylon cover • Heavy-duty PVC • Comfortable neoprene pad
  - 4 EVA foam filled webbing handles with neoprene knuckle guards
  - 1 flat webbing handle • 2 air chambers • 2 water drains
  - covered "Boston" valve • Speed valve • Rider capacity: 2 people
- 230212001

## 02. Airstream III

Deflated size: 76" x 60"/193 x 153 cm

- Full nylon cover • Heavy-duty PVC • Comfortable neoprene pad
  - 6 EVA foam filled webbing handles with neoprene knuckle guards
  - 2 flat webbing handle strips • 2 air chambers • 2 water drains
  - covered "Boston" valve • Speed valve • Rider capacity: 3 people
- 230212002

## 03. Airstream IV

Deflated size: 85" x 75"/216 x 191 cm

- Full nylon cover/Heavy-duty PVC • Comfortable neoprene pad
  - 8 EVA foam filled webbing handles with neoprene knuckle guards
  - 2 flat webbing handle strips • 2 air chambers • 2 water drains
  - covered "Boston" valve • Speed valve • Rider capacity: 4 people
- 230212003







01.



02.



03.





01.



02.

**01. Tribal I**

Deflated size: 50" x 53"/127 x 135 cm

- Full nylon cover • Heavy-duty PVC • 4 EVA foam filled webbing handles with neoprene knuckle guards • 2 air chambers • Easy re-entry • Full neoprene covered airfloor • Water drain • Covered "Boston" valve • "Quick connector" • Rider capacity: 1 person 230411002

**02. Tribal II**

Deflated size: 66" x 55"/168 x 140 cm

- Full nylon cover • Heavy-duty PVC • 4 EVA foam filled webbing handles with neoprene knuckle guards • 2 air chambers • Easy re-entry • Full neoprene covered airfloor • Water drains • Covered "Boston" valve • "Quick connector" • Rider capacity: 2 people 230211004



03.



04.



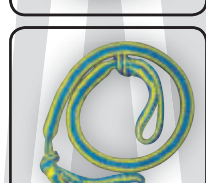
05.



06.



07.



08.



09.



10.

### 03. 2 Person Towrope

Specs: 50 ft/15 m  
• Break strength: 2375 lbs/1077KG • For 1 or 2 person towables  
Stainless steel hook: 210001048  
Without hook: 210012002

### 04. 4 Person Towrope

Specs: 55 ft/17 m  
• Ideal for multi-person towables up to 4 person • 16 strands, 84 filament rope, break strength: 4100 lbs/1860 kg • Float attachment 210001049

### 05. 6 Person Towrope

Specs: 55 ft/17 m  
• Ideal for watersleds and multi-person towables, up to 6 person • 16 strands, 152 filament rope, break strength: 6100 lbs/2767 kg • Float attachment • Up to 6 person towables 210008002

### 06. 10 Person Towrope

Specs: 63 ft/19 m  
• Ideal for watersleds and multi-person towables up to 10 person • 16 strands, 152 filament rope, break strength: 8000 lbs/3628 kg • Float attachment 210012001

### 07. Bungee Rope

Specs: 49 ft/15 m  
• Most extreme towrope on the market • Less stress on towable and boat • Break strength: 3235 lbs/1465 kg 210303001

### 08. Bungee Extension

Specs: 3 ft/90 cm  
• Handy extension of your towrope • Less stress on towable and boat • Break strength: 4100 lbs/1860 kg 210210001

### 09. Buckle Connector

Specs: 3 ft  
• Easy universal connector for all towables without a buckle • Rope break strength: 6100 lbs/2800 kg 230812001

### 10. Quick Release w. Wrist Seal

• Large size Quick Release with rope and wrist seal • Fits all Jobe "Quick connector" buckles that are attached to the tow points of towables 210006005



11.

### 11. Bumble Bee

Deflated size: 56" x 54"/143 cm x 136 cm

Because of the innovated design, the Bumble Bee is the first controllable towable in the Jobe range: you are in control! • Fully nylon covered • Heavy-duty PVC • 2 EVA foam filled webbing handles with neoprene knuckle guards, 1 Flat webbing handle • Comfortable neoprene seat pad • 4 air chambers • 1 water drain • Covered "Boston" valve • 3 speed valves • Rotating "quick connector" • 4 PVC molded fins for more control • Rider capacity: 1 person 230212008



### 01. Breeze

Deflated size: 54" / 138 cm

- Full nylon cover • Heavy-duty PVC • 3 comfortable neoprene pads • 4 EVA foam filled webbing handles with neoprene knuckle guards • Flat webbing handle • 1 air chamber and 1 safety chamber • Water drain • Covered "Boston" valve • "Quick connector"
  - Rider capacity: 1 person
- 230211005

### 02. Storm

Deflated size: 70" / 178 cm

- Improved quality full nylon cover / Heavy duty PVC
  - 3 comfortable neoprene pads • 8 EVA foam soft-grip handles with neoprene knuckle guards • 1 air chamber • 2 water drains, covered boston valve and buoyancy chamber • Quick connector
  - Rider capacity: 2 persons
- 230211006

### 03. Tornado

Deflated size: 80" / 203 cm

- Full nylon cover • Heavy-duty PVC • 3 comfortable neoprene pads • 6 EVA foam filled webbing handles with neoprene knuckle guards • 6 flat webbing handles • 1 air chamber and 1 safety chamber • 2 water drains • covered "Boston" valve • "Quick connector"
  - Rider capacity: 3 person
- 230211007

### 04. Hurricane

Deflated size: 96" / 244 cm

- Full nylon cover • Heavy-duty PVC • 3 comfortable neoprene pads • 8 EVA foam filled webbing handles with neoprene knuckle guards • 6 flat webbing handles • 1 air chamber and 1 safety chamber • 3 Water drains • Covered "Boston" valve • "Quick connector"
  - Rider capacity: 4 person
- 230211008



01.



02.



03.



04.







### 01. Hydra

Deflated size: 54" x 35"/137 x 89 cm  
 • Full nylon cover • Heavy-duty PVC • 2 EVA foam filled webbing handles with neoprene knuckle guards • Supporting sidewalls • 2 air chambers • Water drain • 2 speed valves • "Quick connector"  
 230212014

### 02. Hydra Package

Included: Hydra, Wrist Seal, Quick Release, Orange Flag, Foot Pump and Rope for Towables  
 238812003

### 03. Hover

Deflated size: 104" x 76"/264 x 193 cm  
 • Full nylon cover/heavy-duty PVC • "Quick connector" • 4 EVA foam filled webbing handles • Long flat webbing handle strip  
 • 2 air chambers • 2 water drains • 2 Covered "Boston" valves  
 • Rider capacity: 2 people  
 230410001



01.



02.



03.

#### 04. Joker

Deflated size: 83" x 61"/210 x 155 cm  
• Full nylon cover/heavy-duty PVC • "Quick connector" • 2 EVA foam filled webbing handles • 3 air chambers • 3 covered stem valves • 3 water drains • Rider capacity: 1 person  
230411003

#### 05. GT

Deflated size: 35" x 87"/89 cm x 221 cm  
• Full nylon cover • Heavy-duty PVC • 4 EVA foam filled webbing handles with neoprene knuckle guards • Big Neoprene comfort seat pad • 3 Air chambers, including side floats • 2 PVC fins for tracking • "Quick connector" • Water drain • Covered "Boston" valve • 2 Stem valves • Rider capacity up to 2 person  
230511002



04.



05.





### 01. Great Ride

Deflated size: 87" x 43"/221 x 110 cm

- Full nylon cover • Heavy-duty PVC • "Quick connector" • 2 EVA foam filled webbing handles and 12 flat webbing handles • 3 air chambers • 2 water drains • 3 stem valves • Rider capacity adjustable: 2 person 230110001

### 02. Double Action Hand Pump

Size: 19"/48 cm

- Capacity 4,000 cc • 5 different nozzles (Includes Halkey Roberts nozzle for inflatable boats) 410400021

### 03. Foot Pump

Size: 12.5" / 32 cm

- Capacity 2,000 cc • (Includes Halkey Roberts nozzle for inflatable boats) 410805001

### 04. Heavy-duty Pump

- 3 psi/0.21 bar • Inflates a Hotseat towable in 45 sec. • 230v Euro plug EU Mainland • Perfect pump for larger items • (Includes Halkey Roberts nozzle for inflatable boats) 410205001

NOT AVAILABLE IN THE UK

### 05. Air Pump

- 1 psi/0.07 bar • Inflates a Hotseat towable in 150 sec. • 3 different nozzles 230V euro plug: 410500006 NOT AVAILABLE IN THE UK 230 V UK plug: 410501031 12 V: 410502010

### 06. Turbo 12 V Pump

- Fastest 12 V pump on the market, Inflates a Hotseat towable in 100 sec. • Includes fittings for most inflatable brands • Includes crush resistant hose that fills to 2.5 psi/0.17 bar • 4 different nozzles • Includes Halkey Roberts Valve 410007001





02.



03.



04.



05.



06.

### 07. Octopus 2p

Deflated size: 62" x 69"/157 x 175 cm

- Full nylon cover • Heavy-duty PVC • 4 EVA foam filled webbing handles with neoprene knuckle guards • 2 Neoprene comfort seat pads • 4 air chambers, including 2 side floats & airfloor • "Quick connector" • Water drains • Covered "Boston" valve • 3 stem valves • Rider capacity up to 2 person 230511004

### 08. Octopus 3p

Deflated size: 78" x 69"/198 x 175 cm

- Full nylon cover • Heavy-duty PVC • 8 EVA foam filled webbing handles with neoprene knuckle guards • 1 Flat webbing handle • 3 Neoprene comfort seat pads • 5 Air chambers, including 2 side floats & 2 airfloors • "Quick connector" • Water drains • Covered "Boston" valve • 4 stem valves • Rider capacity up to 3 person 230511001



07.



08.





**01. Thunder**

Deflated size: 53.5" x 55.5"/136 x 141 cm  
 • Nylon cover • Heavy-duty PVC • 2 EVA foam filled webbing handles • 1 air chamber and 1 safety chamber • Water drain • Boston valve • Rider capacity: 1 person  
 230512001

**02. Tube Bag**

1-2 person tube bag: 220810013  
 3-5 Person tube bag: 220811001

**03. Scream Package**

Included: Scream, Wrist Seal, Quick Release, Orange Flag, Foot Pump and Rope for Towables • Nylon cover / Heavy duty PVC • 4 EVA foam soft-grip handles with neoprene knuckle guards • 1 air chamber • Water drain, covered boston valve and buoyancy chamber • Rider capacity: 1 person  
 238812002

**04. Double Trouble**

Deflated size: 76" x 60"/193 x 152 cm  
 • Nylon cover • Heavy-duty PVC • 4 EVA foam filled webbing handles with neoprene knuckle guards • 1 air chamber and 1 safety chamber • Water drain • covered "Boston" valve • "Quick connector" • Rider capacity: 2 person  
 230511003

**05. Triplet**

Deflated size: 96" x 54"/244 x 137 cm  
 • Nylon cover • Heavy-duty PVC • 6 EVA foam filled webbing handles with neoprene knuckle guards • 1 air chamber and 1 safety chamber • Water drain • Covered "Boston" valve • "Quick connector" • Rider capacity: 3 person  
 230211003



02.  
1-2 Pers.



02.  
3-5 Pers.





03.



04.



05.



01.

### 01. The Island

Deflated size: 9,2 ft / 281 cm

"The Island" is for sure a great party Island for 6 friends! You can go tubing or have a great time hanging out on the water and sit back and relax in the sun on this tropical Island.

- Full nylon covered
  - Heavy-duty PVC
  - 12 EVA foam filled webbing handles with neoprene knuckle guards
  - Comfortable neoprene back rest pads
  - 8 Air chambers
  - 6 Integrated cup holders
  - Water drain
  - 1 Speed valves
  - 7 Stem valves
  - "Quick connector"
  - Easy boarding platform
  - Rider capacity: 6 person
- 230212015



02.



03.

#### 02. Speedline Kids Tube

Deflated size: 59" x 44" x 16" / 150 x 112 x 41 cm

- Heavy duty PVC • 2 strong molded handles • 5 air chambers • Boston valve and air floor • Quick connector
  - Rider capacity: 2 kids
- 230107002

#### 03. Dolphi Trainer

Deflated size: 55" x 37" / 140 x 94 cm

- This Jobe Dolphi Trainer is developed to teach children to waterski and to experience the excitement of tubing with fun and confidence. With the possibility to make a dry start, any kid can start easily. When they build up their confidence and skills you can pull them behind a boat. The Dolphi Trainer is easy to re-board from the water or ski platform. It's guaranteed to be a lot of fun!
- Inflatable seat, which can easily be folded down when going to the next ski level
  - Inflatable floor
  - Full nylon covered
  - Heavy-duty PVC
  - 2 flat webbing handles
  - 2 Soft nylon toe grips
  - 2 air chambers
  - 2 water drains
  - 2 speed valves
  - Including trainer handles, tow handle and 32 ft PE line
- Rider capacity: 1 kid
- 230511007

#### 04. Trampoline

Size: 10 ft, 15 ft, 20 ft

- Heavy-duty UV treated PVC vinyl
  - Jump surface 10 ft: 4,7 ft (1.43 m)/15 ft: 7,7 ft (2.36 m)/20 ft: 11 ft (3.30 m)
  - Galvanized frames for strength and durability
  - The black coating on the springs prevent rusting
  - Climb on ladder, repair kit, Heavy-duty pump and anchor bag
- 10 ft (3.00 m): 290210001  
 15 ft (4.60 m): 290210001  
 20 ft (6.10 m): 290210001



TOWABLES  
YOUTH



TRAMPOLINES

# WATER SLEDS



## WATER SLEDS

02.



03.



### 01. Alligator

Deflated size 2 Person: 100"/254 cm - Deflated size 3 Person: 119"/302 cm - Deflated size 4 Person: 135"/343 cm  
 • Full nylon cover/Heavy-duty PVC • Comfortable neoprene pads • EVA foam filled webbing handles • 3 air chambers • Foam strips in nylon cover for inner bladder protection/3 water drains added for less stress on nylon seams • Covered "Boston" valves • "Quick connector"  
 4 Person: 230209003  
 3 Person: 230209002  
 2 Person: 230209001

### 02. Banana Rider

• Proven quality and shape • Heavy density 0.9 mm coated PVC • Thermobonded seams for more strength • 3 air chambers • Nonskid seats • Comfortable handles with vinyl tubing • Complete with foot pump and repair kit  
 8 Person (6.30 m): 320210004  
 6 Person (5.60 m): 320210003  
 5 Person (5.10 m): 320210002  
 4 Person (3.90 m): 320210006  
 3 Person (3.40 m): 320210005

### 03. Multi Rider

• Long nose for more stability • Reinforced sidefloats • Heavy-duty PVC-coated material • "Thermobonded" seams • 3 air chambers with "Halkey Roberts" valves • Minimal resistance design • Super stable • Repair kit included • Includes foot pump  
 8 Person (6.60 m): 320207005  
 6 Person (5.40 m): 320207004  
 5 Person (4.80 m): 320207003





01.



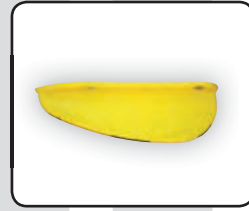
05.



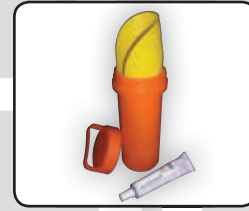
09.



13.



17.



21.



02.



06.



10.



14.



18.



22.



03.



07.



11.



15.



19.



23.



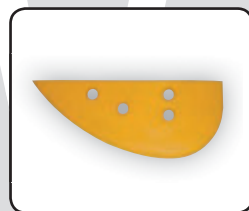
04.



08.



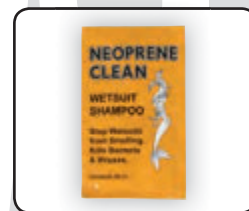
12.



16.



20.



24.



## WAKEBOARDS

### 01. Dorsal Fin PC (PolyCarbonate)

1.0": 380810001

### 02. Dorsal Fin Plastic Universal

Size: 1.3"/1.7"  
380803004

### 03. Dorsal Fin Fiber glass with screw

Size: 0.8"/1.1"  
0.8": 380207001 - 1.1": 380207002

### 04. Dorsal Fin Aluminum

Size Silver: 0.8"/1.3" - Size Black: 0.8"/1.0"  
Silver: 0.8": 380704003 - 1.3": 380703007  
Black: 0.8": 380809003 - 1.0": 380809004

### 05. Screw Fin Jobe Boards (4pcs)

380805002

### 06. Wakeboard Repair Kit

• Great repair kit to keep close to your wakeboard • All you need to repair your board is the sun and some tape  
420005004

### 07. Mini Travel Kit

Includes:  
• 1/2oz tube Solarez fiberfill putty • 1/2 oz tube microlite putty •  
60/240 grit sand pad • Spreader • Acetone prep-pad in a crush-  
proof watertight plastic capsule  
420005005

## WAKESKATE

### 08. Wakeskate Fin (Union/Exceed)

380812001

## SLALOM

### 09. Cheater Kit/Spoiler

The wing is designed to help slow the ski down as you approach the turns • The more angle you set on the wing, the faster your ski will decelerate into the turns • The tolerances for the wing angle should be kept between 6-10 degrees  
330800009

### 10. Adjustable Competition Slalom Fin

Adjustable fin-block and 6-hole round blade • Hex locking bolts and set screws • Fits on all Jobe skis and on most of the other brands  
330700011

### 11. Standard Slalom Fin

380707001

### 12. Slalom Buoy

Color: Red, Yellow, Green  
• Competition size: 9" diameter  
Red: 360403001 - Yellow: 360203001 - Green: 361103001

## COMBO SKIS

### 13. Squeeze Heel

Adult: 350800006  
Junior: 350801008  
Trainer: 350801010

### 14. Front Toe

Adult: 350800005  
Junior: 350801007  
Trainer: 350801009

### 15. Slalom Toe

Adult: 350800001  
Junior: 350804001

### 16. Combo Fin

350803002

### 17. Fin Trainer High incl. Screws

350210001

### 18. Fin Trainer Low incl. Screws

350804002

## TOWABLES

### 19. "Boston" Valve

410800024

### 20. Compressor Adaptor

• Fits "Boston" valve  
410200023

### 21. Multi Rider Repair Kit

320005002

### 22. Towable Repair Kit

410010001

## DIVERSE

### 23. Multi Purpose Repair Kit

Permanent flexible waterproof repairs for wetsuits, air mattresses, bags, shoes and other products made out of neoprene, nylon, rubber, leather, PVC, PU and most other plastics  
420005001

## WETSUITS

### 24. Wetsuit Shampoo

420008002



EXTRAS  
EXTRAS

# SIZECHARTS & SPECIFICATIONS

## 004-009 LADIES WETSUITS

	EURO SIZE	HEIGHT FT	HEIGHT CM	CHEST INCH	CHEST CM	WAIST INCH	WAIST CM
XS	34	5'-5.2"	152-157	27"-31.5"	69-80	22.5" - 26.5"	57-67
S	36	5'2"-5'3"	157-160	29"-32.5"	74-83	24" - 27.5"	61-70
M	38	5'3"-5'4"	160-165	32"-34.5"	81-88	25" - 29"	64-74
L	40	5'4"-5'5"	165-168	32.5"-35.5"	83-90	27" - 30.5"	68-77
XL	42	5'5"-5'7"	168-173	33"-36.5"	84-93	28.5" - 31"	72-79
XXL	44	5'7"-5'8"	173-178	35.5"-39.5"	90-100	29.5" - 33.5"	75-85

## 010-016 MEN WETSUITS

	EURO SIZE	HEIGHT FT	HEIGHT CM	CHEST INCH	CHEST CM	WAIST INCH	WAIST CM
XS	46	5'4"-5'6"	163-168	34"-37"	86-94	26" - 30"	66-76
S	48	5'6"-5'8"	168-173	35"-38"	88-97	27" - 31"	69-79
M	50	5'8"-5'9"	173-175	36.5" - 39.5"	93-100	29" - 33"	74-84
L	52	5'9"-6'1"	175-180	38" - 41"	97-104	30" - 34"	76-86
XL	54	6'1"-6'3"	180-183	38.5" - 41.5"	98-105	31" - 35"	79-89
XXL	56	6'3"-6'4"	183-185	41" - 43.5"	104-110	33" - 37"	84-94
XXXL	58	6'4"-6'5"	185-187	43" - 44.5"	109-115	35" - 39"	86-96

## 020-025 VESTS MEN USCG-APPROVED

		XS (UNI-INFANT)	S (S/M)	M	L (L/XL)	XL	XXL (2XL/3XL)	XXXL
INTENSE VEST	CHEST	35"-37.5"	37.5"-40"	40"-42.5"	42.5"-45"	45"-47.5"	47.5"-50"	
	WEIGHT	>90LBS	>90LBS	>90LBS	>90LBS	>90LBS	>90LBS	
VIPER VEST	CHEST	33"-36"	37"-40"	41"-44"	45"-48"	49"-52"	53"-56"	
	WEIGHT	>90LBS	>90LBS	>90LBS	>90LBS	>90LBS	>90LBS	
COMBAT VEST	CHEST	33"-36"	37"-40"	41"-44"	45"-48"	49"-52"	53"-56"	
	WEIGHT	>90LBS	>90LBS	>90LBS	>90LBS	>90LBS	>90LBS	
4 BUCKLE PRO	CHEST	29"-32"	33"-36"	37"-40"	41"-44"	45"-48"	49"-52"	53"-56"
	WEIGHT	>90LBS	>90LBS	>90LBS	>90LBS	>90LBS	>90LBS	>90LBS
OUTBURST	CHEST	33"-40"	33"-40"	37"-40"	41"-48"	49"-56"	49"-56"	
	WEIGHT	>90LBS	>90LBS	>90LBS	>90LBS	>90LBS	>90LBS	
UNIVERSAL	CHEST	30"-52"						
	WEIGHT	>90LBS						
CODE	CHEST	30"-33"	34"-36"	37"-39"	40"-42"	43"-45"		
	WEIGHT	>90LBS	>90LBS	>90LBS	>90LBS	>90LBS		
INDY	CHEST	33"-36"	36"-39"	39"-42"	42"-45"			
	WEIGHT	>90LBS	>90LBS	>90LBS	>90LBS			
ESSENCE	CHEST	30"-33"	34"-36"	37"-39"	40"-42"	43"-45"		
	WEIGHT	>90LBS	>90LBS	>90LBS	>90LBS	>90LBS		
MICRON	CHEST	25"-29"						
	WEIGHT	50-90LBS						
TRACE	CHEST	-						
	WEIGHT	50-90LBS						
NEXUS	CHEST	-						
	WEIGHT	0-30LBS						

## 020-025 VESTS MEN CE-APPROVED

		XS	S (S/M)	M	L (L/XL)	XL	XXL	XXXL
INTENSE VEST	CHEST	88-95 CM	95-101 CM	101-107 CM	107-114 CM	114-120 CM	120-127 CM	
	WEIGHT	40-60 KG	50-70 KG	60-80 KG	>70 KG	>70 KG	>70 KG	
VIPER VEST	CHEST	88-95 CM	95-101 CM	101-107 CM	107-114 CM	114-120 CM	120-127 CM	
	WEIGHT	40-60 KG	50-70 KG	60-80 KG	>70 KG	>70 KG	>70 KG	
TREASURE VEST	CHEST	75-90 CM	85-100 CM	95-100 CM	105-120 CM	115-130 CM	120-135 CM	
	WEIGHT	40-50 KG	50-70 KG	>70 KG	>70 KG	>70 KG	>70 KG	
DLX VEST	CHEST	88-95 CM	95-101 CM	101-107 CM	107-114 CM	114-120 CM	120-127 CM	
	WEIGHT	40-60 KG	50-70 KG	60-80 KG	>70 KG	>70 KG	>70 KG	
FREESTYLE VEST	CHEST	80-100 CM						
	WEIGHT	50-70 KG						
TRIGGER VEST	CHEST	70-80 CM	80-90 CM	90-100 CM	100-110 CM	110-120 CM	120-130 CM	130-140 CM
	WEIGHT	40-50 KG	50-60 KG	>60 KG	>70 KG	>70 KG	>70 KG	>70 KG
COMBAT VEST	CHEST		80-90 CM	90-100 CM	100-110 CM	110-120 CM	120-130 CM	130-140 CM
	WEIGHT		50-60 KG	>60 KG	>70 KG	>70 KG	>70 KG	>70 KG

## 026 - 027 JOB IMPACT SHIELDS

		XXS	XS	S	M	L	XL	XXL
MEN IMPACT SHIELD	CHEST	82-86 CM	87-91 CM	92-96 CM	97-101 CM	102-106 CM	107-111 CM	112-116 CM
LADIES IMPACT SHIELD	CHEST		80-84 CM	85-89 CM	90-94 CM	95-99 CM	100-104 CM	

## 028-029 VESTS LADIES CE-APPROVED

		XS	S	M	L	XL	XXL
INDY VEST	CHEST	76-83 CM	83-91 CM	91-99 CM	99-106 CM	106-114 CM	
	WEIGHT	30-50 KG	40-60 KG	50-70 KG	60-80 KG	>70 KG	
DELIGHT VEST	CHEST	65-75 CM	70-85 CM	75-90 CM	85-100 CM	95-100 CM	
	WEIGHT	30-40 KG	30-40 KG	40-50 KG	50-70 KG	>70 KG	
CODE VEST	CHEST	69-76 CM	76-83 CM	83-91 CM	91-99 CM	99-106 CM	107-114 CM
	WEIGHT	30-40 KG	40-60 KG	50-70 KG	>60 KG	>70 KG	>70 KG
ESSENCE VEST	CHEST	69-76 CM	76-83 CM	83-91 CM	91-99 CM	99-106 CM	106-114 CM
	WEIGHT	30-40 KG	40-60 KG	50-70 KG	>60 KG	>70 KG	>70 KG
PURE VEST	CHEST	69-76 CM	76-83 CM	83-91 CM	91-99 CM	99-106 CM	106-114 CM
	WEIGHT	30-40 KG	40-60 KG	50-70 KG	>60 KG	>70 KG	>70 KG

## 030-031 JOB VESTS UNISEX CE-APPROVED

		S/M	L/XL	XXL/XXXL	4XL/5XL		
OUTBURST VEST	CHEST	80-100 CM	100-110 CM	110-130 CM	>130 CM		
	WEIGHT	50-70 KG	>70 KG	>70 KG	>70 KG		
UNIVERSAL VEST		UNIVERSAL					
	CHEST	75-130 CM					
4 BUCKLE PRO VEST	CHEST	XS/JR. 70-80 CM	S 80-90 CM	M 80-100 CM	L 90-100 CM	XL 100-110CM	XXL 110+ CM
	WEIGHT	40-50 KG	50-60 KG	60-70 KG	>70 KG	>70 KG	>70 KG
COMFORT BOATING VEST	CHEST	65-77 cm	70-90 CM	80-95 CM	90-115 CM	>115 CM	
	WEIGHT	30-40 KG	40-60 KG	60-70 KG	70-90 KG	>90 KG	
PET BOUYANCY JACKET	NEWTON	50 N	70 N	80 N	100 N	100 N	
	WEIGHT		<7 KG	7-14 KG	14-27 KG		

## 036-037 PWC VESTS CE-APPROVED

		S (S/M)	M	L (L/XL)	XL	XXL (XXL/XXXL)	XXXL
DLX VEST	CHEST	88-95 CM	95-101 CM	101-107 CM	107-114 CM	114-120 CM	120-127 CM
	WEIGHT	40-60 KG	50-70 KG	60-80 KG	>70 KG	>70 KG	>70 KG
SECURE ENTRY VEST	CHEST	50-70 CM		100-110 CM		>120 CM	
	WEIGHT	50-70 KG		>70 KG		>70 KG	

## 038-039 NEOPRENE SHOE/BOOT SIZES

	4	5	6	7	8	9	10	11	12
EURO	36	37	38	39-40	41-42	43	44	45	46
US	4 1/2	5	6	7-7 1/2	8-8 1/2	9	10 1/2	11 1/2	12
UK	4	4 1/2	5 1/2	6 1/2-7	7 1/2-8	8 1/2	10	11	12

## 038-039 NED SOCK

	S	M	L
EURO	<40	<43	<46

## 040-042 YOUTH WETSUITS

	XXXS	XXS	XS	S	M	L	XL	XXL	XXXL
LENGTH (CM)	92	98-104	110-116	122-128	134-140	146	152-158	164	170
AGE	1 1/2-2	2-4	4-6	6-8	8-10	10-12	12-14	14	15

## 042 NEOPRENE SHOES YOUTH

	XS	S	M	L	XL
	25-26	27-28	29-30	31-32	33-34

## 043 YOUTH BOARDSHORTS

	LENGTH	CM	AGE
S		122-128	6-8
M		134-140	8-10
L		146	10-12
XL		152-158	12-14
XXL		164	14

## 043 YOUTH RASH GUARDS

	LENGTH CM	AGE
4XS-3XS	<86-92	1-2
2XS-XS	98-116	3-5
S-M	122-140	6-10
L-XL	146-158	10-14

All sizes and measurements are for reference only

### 044-045 YOUTH VESTS

		UNI.	INFANT	CHILD	3XS-2XS	XS-S	M-L	S-M	L-XL	XXL
MICRON VEST	CHEST WEIGHT	63-73 CM 30-40 KG								
REBEL SQUARE JACKET	CHEST						58-63 CM	63-68 CM	68-79 CM	
NEXUS SAFETY VEST	WEIGHT	<20	20-30 KG							
COMFORT BOATING VEST	CHEST WEIGHT NEWTON			<57 CM 10-15 KG 30 N	<65 CM 10-20 KG 40 N	60-70 CM 20-30 KG 40N				
JOY/SCRIBBLE VEST	CHEST WEIGHT	63-73 CM 30-40,5 KG								
TRACE/STARTER VEST	CHEST WEIGHT	60-70 CM 30-40 KG								

### 046-047 RASH GUARDS MEN

	EURO SIZE	HEIGHT INCH	HEIGHT CM	CHEST INCH	CHEST CM	WAIST INCH	WAIST CM
XS	46	5'4"-5'6"	163-168	34"-37"	86-94	26"-30"	66-76
S	48	5'6"-5'8"	168-173	35"-38"	88-97	27"-31"	69-79
M	50	5'8"-5'9"	173-175	36 1/2"-39 1/2"	93-100	29"-33"	74-84
L	52	5'9"-6'1"	175-180	38"-41"	97-104	30"-34"	76-86
XL	54	6'1"-6'3"	180-183	38 1/2"-41 1/2"	98-105	31"-35"	79-89
XXL	56	6'3"-6'4"	183-185	41"-43 1/2"	104-110	33"-37"	84-94
XXXL	58	6'4"-6'5"	185-187	43"-44 1/2"	109-115	35"-39"	86-96

### 048-049 RASH GUARDS LADIES

	EURO SIZE	HEIGHT INCH	HEIGHT CM	CHEST INCH	CHEST CM	WAIST INCH	WAIST CM
XS	34	5"-5'2"	152-57	27"-31 1/2"	69-80	22 1/2"-26 1/2"	57-67
S	36	5'2"-5'3"	157-160	29"-32 1/2"	74-83	24"-27 1/2"	61-70
M	38	5'3"-5'5"	160-165	32"-34 1/2"	81-88	25"-29"	64-74
L	40	5'5"-5'6"	165-168	32 1/2"-35 1/2"	83-90	27"-30 1/2"	68-77
XL	42	5'6"-5'8"	168-173	33"-36 1/2"	84-93	28 1/2"-31"	72-79

### 062-075 WAKEBOARDS

	AUSTIN	AUSTIN	AUSTIN	CLICK	CLICK	GUERRILLA	GUERRILLA	BRIGADE	BRIGADE
LENGTH	133	137	141	139	143	137	142	134	139
INSERT SETUP	6"	6"	6"	6"	6"	6"	6"	6"	6"
TIP/TAIL WIDTH	26,5	27,25	28	30	31,7	32,5	33,5	31,12	31,75
CENTER WIDTH	41	41,8	42,5	42,2	43,4	45	45,5	42,42	42,8
ROCKER	Hybrid Rocker	Hybrid Rocker	Hybrid Rocker	Continuous	Continuous	Subtle 3-stage	Subtle 3-stage	Hybrid	Hybrid
BOARD LEVEL	I/A*	I/A*	I/A*	I/A*	I/A*	Advanced	Advanced	Advanced	Advanced
RIDER WEIGHT	45 - 76	64 - 94	75 and up	70-100	80 AND UP	63-95	75 and up	up to 82	63 and up

	REGION	REGION	VANITY	VANITY	VANITY	REPUBLIC	REPUBLIC	REPUBLIC
LENGTH	139	143	131	136	141	127	135	140
INSERT SETUP	6"	6"	6"	6"	6"	6"	6"	6"
TIP/TAIL WIDTH	27,5	28,3	24,8	25,4	25,9	23,4	27,4	27,7
CENTER WIDTH	43,7	44,3	42,5	42,2	43,4	45	45,5	42,42
ROCKER	3-Stage	3-Stage	A/C*	A/C*	A/C*	3-stage	3-stage	3-stage
BOARD LEVEL	I/A*	I/A*	ALL	ALL	ALL	Beg.-Adv.*	ALL	ALL
RIDER WEIGHT	63-95	75 and up	31-67	45-81	63-103	24-62	45-77	70 and up

	ARTIST	ARTIST	ARTIST	MAX	MAX	ISIS	ISIS	PEARL	PEARL
LENGTH	132	137	142	131	136	132	137	127	135
INSERT SETUP	6"	6"	6"	6"	6"	6"	6"	6"	6"
TIP/TAIL WIDTH	26,8	26,8	27	24,8	25,4	26,8	43,1	23,4	27,4
CENTER WIDTH	43,1	43,6	43,9	39,9	40,4	43,1	43,6	40,1	42,7
ROCKER	3-Stage	3-Stage	3-Stage	A/C*	A/C*	3-Stage	3-Stage	3-Stage	3-Stage
BOARD LEVEL	I/A*	I/A*	I/A*	ALL	ALL	I/A*	I/A*	ALL	ALL
RIDER WEIGHT	31-67	45 - 81	63 and up	31-67	45-81	31-67	45-81	24-62	45-77

\* I/A = Intermediate / Advanced, Beg.-Adv. = Beginner / Advanced  
A/C = Aggressive / Continuous

All sizes and measurements are for reference only

### 080-085 HIGH END WAKEBOARD BINDINGS

AUSTIN SERIES										
US	4.5-5	6	7-7.5	8-8.5	9	10	11-12			
EU	36-37	38	39-40	41-42	43	44	45-46			
CLICK										
US	4.5-5	6	7-7.5	8-8.5	9	10	11-12			
EU	36-37	38	39-40	41-42	43	44	45-46			
BRIGADE										
US	4.5-5	6	7-7.5	8-8.5	9	10	11-12			
EU	36-37	38	39-40	41-42	43	44	45-46			
DELUXE										
US	4.5-5	6	7-7.5	8-8.5	9	10	11-12			
EU	36-37	38	39-40	41-42	43	44	45-46			

### 076-086 WAKEBOARD BINDINGS

	MINI	STANDARD	XL
STRIKE			
US		6.5-11.5	9-13
EU		38.5-45	43-48
STATIC			
US	3-7	7-11	9-13
EU	34-40	39-45	42.5-48
MAZE			
US		7-11	
EU		39-45	
JUNIOR			
US	4.5-7.5	3-6	
EU	36-40	34-38	

### 099 WAKESKI RIDER WEIGHT

	144	153
WEIGHT (KG) WAKE	40-70	65-100
WEIGHT (KG) CABLE	40-80	70-100

### 090-091 COMBO SKIS

	LENGTH	WEIGHT	BINDING SIZE (EU)
HEMI	59"	Up to 59 KG	35-40
	62"	36-73 KG	37-45
	65"	50 KG and up	37-45
TRADITIONAL	46"	up to 33 KG	
	59"	up to 54 KG	35-40
	67"	50 KG and up	37-45

### 094 SLALOM SKIS

	ROGUE	ENCORE	DEFIANT	BARON	FLORA	HAMMER	ASSAULT JR	HEMI	PROGRESS
PRO	X	X	X						
ADVANCED		X	X	X	X		X		
INTERMEDIATE				X	X	X	X	X	X
BEGINNER				X	X	X	X	X	X

### 095-098 TRADITIONAL SLALOM SKIS JOBE

	63.5	65"	66"	67"	68"	69"
28-30 MPH / 46-49 KMH	30-45 KG	45-54 KG	50-60 KG	54-64 KG	59-68 KG	64-73 KG
30-32 MPH / 40-52 KMH	40-55 KG	54-64 KG	60-70 KG	64-73 KG	68-77 KG	73-82 KG
32-34 MPH / 52-55 KMH	50-60 KG	64-73 KG	70-80 KG	73-82 KG	77-86 KG	82-91 KG
34-36 MPH / 55-58 KMH	50-70 KG	73-82 KG	75-85 KG	82-91 KG	86-95 KG	91-100 KG

### 098 WIDE TRACK SLALOM SKIS

	65"	67"	68.5"	69"
21-23 MPH / 34-37 KMH	32-52 KG	36-50 KG	50-65 KG	54-68 KG
23-25 MPH / 37-40 KMH	46-60 KG	50-64 KG	65-80 KG	68-82 KG
25-27 MPH / 40-43 KMH	60-73 KG	64-77 KG	80-95 KG	82-95 KG
27-28,5 MPH / 43-46 KMH	72-84 KG	77-91 KG	95-105 KG	95-109 KG
28.5-30,5 MPH / 46-49 KMH	84-95 KG	91-104 KG	100 KG+	100 KG+

### 039 / 108 HELMETS

LOGO SERIES	AUSTIN, CLICK	STRIPE, X	BARRACUDA
HUSTLER	ACHELOS, PATROL	S/M 54-58 CM	M 57-58 CM
S 53-54 CM	S 53-54 CM	L/XL 58-62 CM	L 59-60 CM
M 55-56 CM	M 55-56 CM		XL 61-62 CM
L 57-58 CM	L 57-58 CM		
XL 59-60 CM	XL 59-60 CM		

MAX			
US (FEMALE)	6-7	8	8.5-9.5
EU (FEMALE)	36-37	38	39-41
VANITY			
US	5-8	8-11	11-14
EU	37-41	41-45	45-48.5
REPUBLIC			
US	5-8	8-11	11-14
EU	37-41	41-45	45-48.5
REPUBLIC JR			
US	4.5-7.5		
EU	36-40		
PEARL			
US (FEMALE)	5-9	8-11	
EU (FEMALE)	35-38.5	38.5-43	

### 087 WAKESKATES

	SAVAGE 43"	EXCEED 41"	EXCEED 43"	UNION 43"
LENGTH (CM)	109	104	109	109
TIP / TAIL WIDTH (CM)	26	29.5	29.5	30.5
CENTER WIDTH (CM)	39.5	37.8	37.8	40.5
WEIGHT (KG)	3.3	4.04	4.44	5
ROCKER	Continuous	Continuous	Continuous	Continuous

### 088-089 KNEEBOARDS

	PROPHECY	TEMPEST	CHILI PEPPER	SHOCK	JUSTICE
LENGTH (CM)	138	138	135	132	135
WIDTH (CM)	51	51	50	51,56	51,56
WEIGHT (KG)	8,75	8,75	8,75	7,26	6,8
STRAP	DOUBLE	SINGLE	SINGLE	DOUBLE	SINGLE
FINN	INMOLDED	INMOLDED	NONE	NONE	NONE
HYDROHOOK	NO	NO	NO	YES	YES

### 090-093 COMBO SKI BINDINGS

	TRAINER	JUNIOR	ADULT
US	>4.5	3.5-7	5.5-11.5
EU	>36	35-40	37-45

### 100-101 SLALOM SKI BINDINGS

	ROGUE	HEMI	PROGRESS
US	8-8.5	9	10
EU	41-42	43	44

	LIMIT	XS	S	M	L	XL	XXL	
EU	33-35	36-40	41-43	44-45	46-47	47-48		
FOCUS STANDARD XL								
EU	38.5-42			43-48				
COMFORT								
US	5-8		8-11			11-14		
EU	37-41		41-45			45-48,5		
CAPRI								
US	5-8		8-11					
EU	35-38,5		38,5-43					

### 109 KNEEBRACE

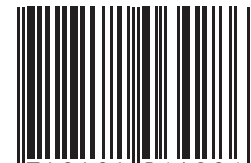
	S	M	L	XL
S		40 CM-44 CM		
M		43 CM-47 CM		
L		45 CM-49 CM		
XL		48 CM-52 CM		



2012



**JOBE**  
.....  
**JOBESPORTS.COM**



8 718181 064286